

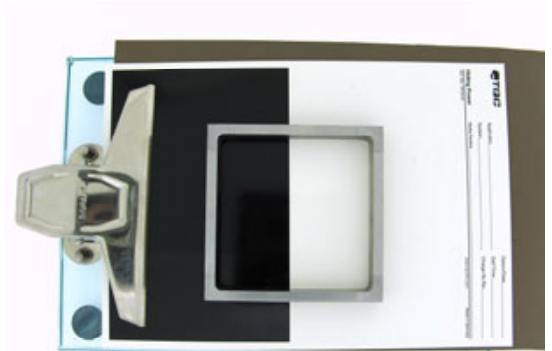
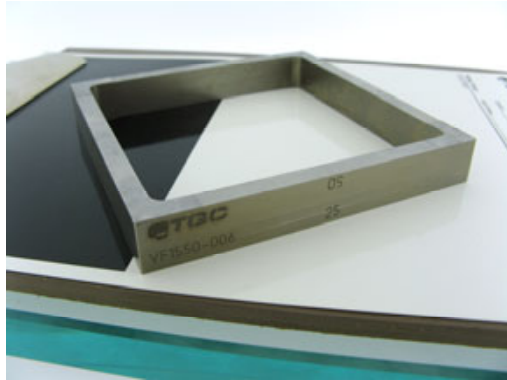
TQC Octoplex Film Applicator

VF1550

Datasheet

Product Description: Multifunctional film applicator with 8 application sides for application paint-films of 8 different pre-defined thicknesses. Since it's made out of high-grade stainless steel, the Octoplex will not be affected by acid or base elements

Standards ASTM D 3022, ASTM D 823, FMTS 141a/ 2161/ 2162/ 4255/ 6226



Standard delivery: Supplied in protective plastic case with protective liner, a TQC float-glass application table is optional.

Use Select the appropriate gap and place the applicator on a plane smooth surface such as a glass plate. Apply a sample of paint in the centre of the TQC Octoplex applicator near the correct opening. Draw down the applicator over the surface.
 Due to physical reasons the max. film attainable wet film thickness is not equal to the gap depth. Deposited film thickness may vary from 40% to 80% of the clearance/gap depth. Dry film thickness will be lower than wet thickness due solvent/water evaporation.

Technical data

Material	: high grade stainless steel.
Accuracy	: better than 3 micron
Outer dimensions	: 85 x 85 x 11 mm.
Clearance width	: 60 mm.
Clearance heights/gaps	: 25, 50, 75, 100, 125, 150, 175, 200 micron

Special care Clean immediately after use with solvents or water. Never use abrasives or mechanical means to clean. Treat the products with care and caution.

Disclaimer: The information given in this sheet is not intended to be exhaustive and any person using the product for any purpose other than that specifically recommended in this sheet without first obtaining written confirmation from us as to the suitability of the product for the intended purpose does so at his own risk. Whilst we endeavour to ensure that all advice we give about the product (whether in this sheet or otherwise) is correct we have no control over either the quality or condition of the product or the many factors affecting the use and application of the product. Therefore, unless we specifically agree in writing to do so, we do not accept any liability whatsoever or howsoever arising for the performance of the product or for any loss or damage (other than death or personal injury resulting from our negligence) arising out of the use of the product. The information contained in this sheet is liable to modification from time to time in the light of experience and our policy of continuous product development.