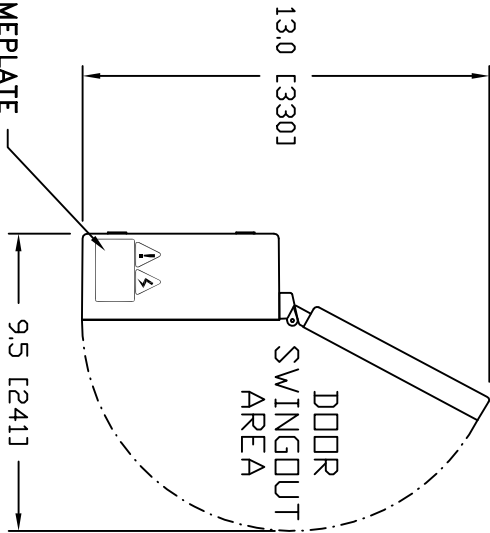
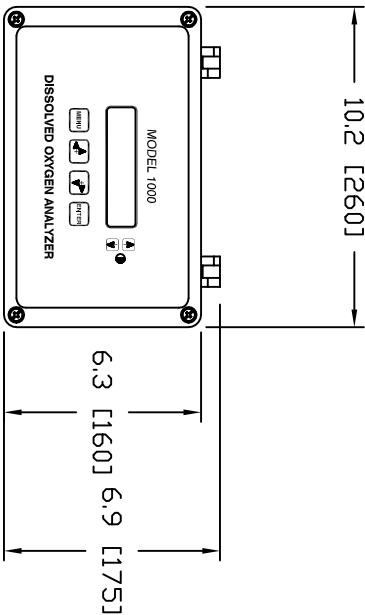


REVISIONS			DATE	APPROVED
ZONE	LTR	DESCRIPTION		



SIDE VIEW



PLAN VIEW

- Notes:
- Construction: Fiberglass, NEMA 4X, IP66, IP67, IP68  
Enclosure is UL Listed BE-097461
  - Approximate Weight: 6 LB..

**Warning!** In "Normal Operation" the hinged cover is to remain tightly screwed closed. Under no circumstance is it necessary for the operator to open the enclosure.

**Warning!** Before opening; switch off the analyzer power at the circuit breaker to avoid risk of shock.

UNLESS OTHERWISE SPECIFIED, DIMENSIONS ARE IN INCHES TOLERANCES DECIMALS ANGULAR XX ±.010 X° ±1° XXX ±.005		CONTRACT NO.	
DO NOT SCALE DRAWING	CHECK	DRAWN	DATE
MATERIAL	DESIGN		
FINISH	APPROVED		
SPEC.	CUSTOMER		
TITLE OUTLINE & MOUNTING INSITE ANALYZER		80 Whisperwood Blvd. Suite 107 Slidell, LA 70458	
SIZE	DWG. NO.	SCALE	NTS
C	IIG01N111		
REV		SHEET	1 OF 2