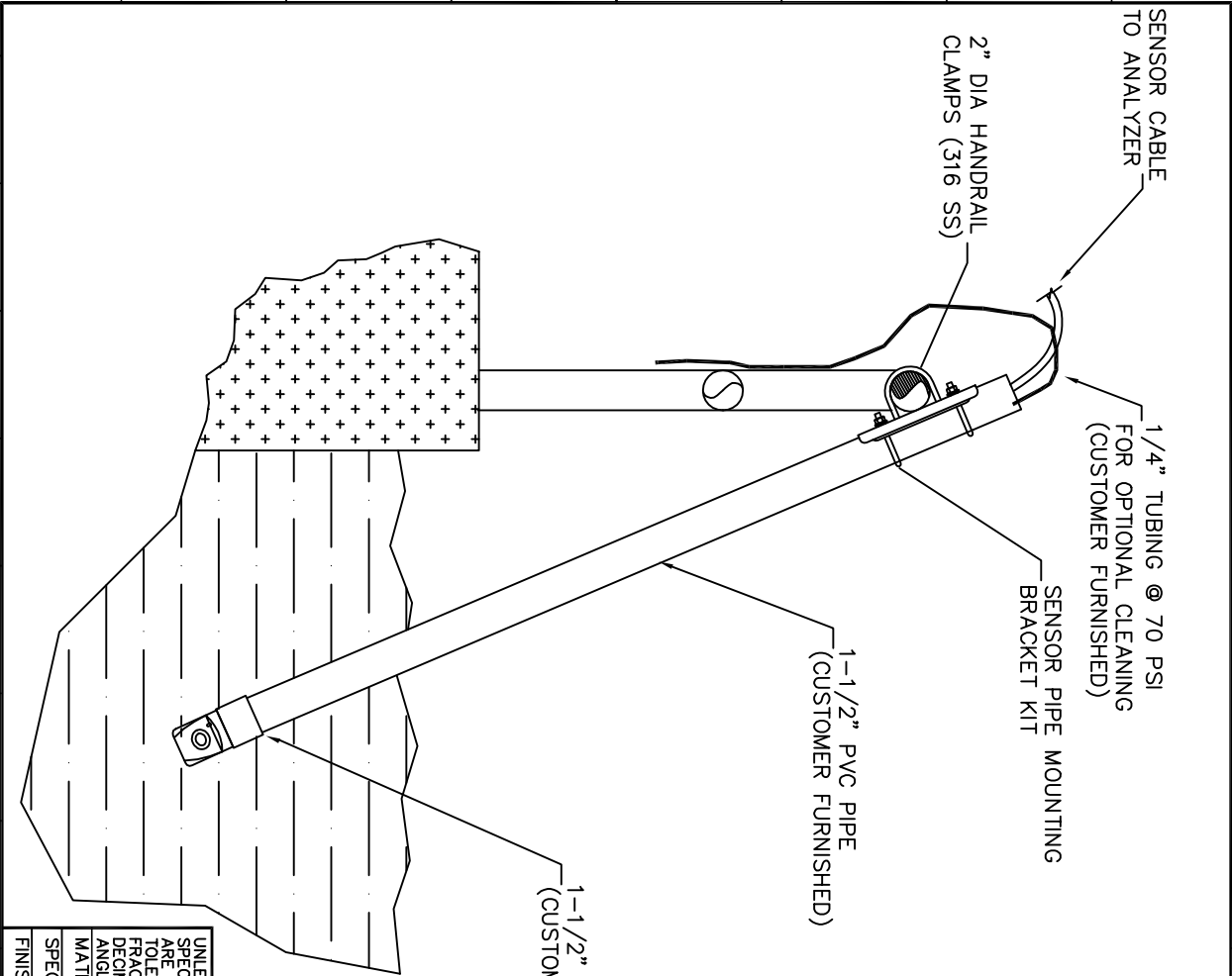



| REVISIONS | | | |
|-----------|-----|-------------|----------|
| ZONE | REV | DESCRIPTION | DATE |
| | | | APPROVED |

IIIG02N005

A

- Notes:
- 1) For best accuracy, Oxygen measurements should be taken 2ft. below the surface and 3ft. from the wall.
 - 2) Measurement element surface should not be facing directly upward or downward. Sensor should be clocked to the 3 or 9 o'clock position as shown.



| | | | | | | | | | | | |
|---|--|--|--|--------------|--|--|--|---|--|--|--|
| UNLESS OTHERWISE SPECIFIED: DIMENSIONS ARE IN INCHES. TOLERANCES ON: FRACTIONS DECIMALS ANGLES MATERIAL | | | | CONTRACT NO. | | | |  <div>80 Whisperwood Blvd. Suite 107 Slidell, LA 70458</div> | | | |
| SPEC | | | | DRAWING NO. | | | | DO SENSOR MOUNTING | | | |
| FINISH | | | | SCALE | | | | SHEET 1 OF 1 | | | |
| APPROVAL | | | | DESIGNER | | | | REV A | | | |
| CHECKER | | | | DATE | | | | | | | |
| DRAFTSMAN | | | | | | | | | | | |
| PROJ. ENGR. | | | | | | | | | | | |
| RELEASED | | | | | | | | | | | |