



OPERATIONS MANUAL

PC3400



Online Digital Particle Counter

Firmware Revision 1.09
Issue Date: 06/30/2011

Table of Contents

SAFETY PRECAUTIONS	4
WARRANTY INFORMATION	5
1.0 GENERAL INFORMATION	6
1.1 BEFORE GETTING STARTED	6
1.2 UNPACKING UNIT	6
1.3 UNIT LABELING	7
1.4 FEATURES AND BENEFITS	7
1.5 SPECIFICATIONS	8
1.6 BASIC THEORY OF OPERATION	10
2.0 INSTALLATION	13
2.1 WEIR ASSEMBLY	13
2.2 MOUNTING	14
2.3 WIRING	15
2.4 SAMPLE SETUP	20
3.0 PARTICLE COUNTER OPERATION	23
3.1 USER INTERFACE (KEY PAD)	23
3.2 READOUT / DISPLAY SCREENS	24
3.3 USER MENU / SETUP SCREENS	26
3.4 RS-485/RS-232 COMMUNICATION AND POWER INDICATORS	31
3.5 CLEANING PROCEDURE	32
4.0 DOWNLOADING DATA	34
4.1 INSTALLING AND SETTING UP TRACDATA SOFTWARE	34
4.2 CONNECTING RS-232 DOWNLOAD CABLE	35
4.3 DOWNLOADING DATA	36
4.1 EXPORTING DATA	37
5.0 RECOMMENDED SPARE PARTS LIST	38
5.1 ORDERING SPARE PARTS	38
APPENDIX A	39
USER MENU MAP	39

LIST OF FIGURES

Figure 1 Light Obscuration Measurement (Diagram 1)	10
Figure 2 Particle Size Comparison	11
Figure 3 System Components.....	12
Figure 4 PC3400 and Flow Control Weir Plumbing	12
Figure 5 Weir Assembly	13
Figure 6 System Dimensions	14
Figure 7 115/230V and Power Switches	15
Figure 8 Warning Label.....	15
Figure 9 Power Terminal Block	16
Figure 10 RS-485 Communications	17
Figure 11 Optional MODBUS TCP Communications	18
Figure 12 Analog I/O Wiring Terminals.....	18
Figure 13 Analog Input Type Jumper Selection.....	19
Figure 14 Optional Analog Input Card	19
Figure 15 Sample Tap.....	20
Figure 16 Sensor Flow Rate Adjustment	21
Figure 17 Optional Analog Output Board Adjustment.....	30
Figure 18 Sensor Cleaning Methods	33

SAFETY

In order to provide maximum user safety the PC3400 particle counter was designed with the following issues in mind.

- ❑ All electrical circuitry is enclosed within a protective non-conductive housing.
- ❑ No user serviceable parts.
- ❑ No user replaceable parts.
- ❑ No access to laser.

SAFETY PRECAUTIONS

It is important to review this list of precautions prior to installation.

- ❑ Do not attempt to disassemble the unit.
- ❑ Water must not be allowed to enter the housing of the unit.
- ❑ Close and fasten shut the door of the unit prior to any external cleaning to prevent water ingress.
- ❑ Do not drop or jar the unit.
- ❑ Use a mild non-abrasive cleanser when cleaning the outer cover of the unit.
- ❑ Do not modify any internal electrical wiring or electronics.
- ❑ The PC3400 sensor is equipped with a class III laser and should not be tampered with in any way. The following warning label is affixed to the laser assembly housing inside of the unit.



In order to provide maximum user safety this instrument was designed with all electrical circuitry enclosed within a protective non-conductive housing. The label below will be visible at any location where high voltage is present.



WARRANTY INFORMATION

Chemtrac, Inc. warrants its equipment to be free from defects in material and workmanship for a period of one (1) year from date of shipment to the original purchaser. Upon receipt of written notice from purchaser, seller shall repair or replace the equipment (at option of Chemtrac, Inc.).

Chemtrac, Inc. assumes no responsibility for equipment damage or failure caused by:

1. Improper installation, operation, or maintenance of equipment.
2. Abnormal wear and tear on moving parts caused by some processes.
3. Acts of nature (i.e. lightning, etc.)
4. The sensor optical alignment is very sensitive to vibration. Avoid installation locations with high amounts of vibration. If drilling of enclosure is necessary, please contact the factory for guidance.

This warranty represents the exclusive remedy of damage or failure of equipment. In no event shall Chemtrac, Inc. be liable for any special, incidental, or consequential damage such as loss of production or profits.

Should you experience trouble with the equipment, please contact:

Chemtrac, Inc

6991 Peachtree Industrial Blvd., Building 600
Norcross, GA 30092

Phone: 1-800-442-8722 (Inside US only), 770-449-6233

Fax: 770-447-0889

Email: chemtrac@chemtrac.com

Website: www.chemtrac.com

1.0 GENERAL INFORMATION

1.1 BEFORE GETTING STARTED

NOTE: Do not plug in or power up this unit without first verifying the 115/230 VAC Select Switch is in the proper position (see figure 7). In order to insure proper operation of the PC3400, it is important to follow the installation guidelines outlined in this manual. Individual plant requirements and layouts will vary, resulting in alterations to the procedures.

The particle counter is one of the most sensitive and precise on-line instruments in use in water treatment today. In order to achieve and maintain optimal performance, it is imperative that proper installation and operational procedures be followed.

The sensitivity of the unit to small concentrations of particles well below the range of visibility requires that the sample be delivered to the sensor without contamination or alteration. Data produced is based on the sample volume, so flow rate must be maintained at a constant value. The flow path through the sensor is small (750 μ m x 750 μ m) in comparison to other types of on-line instruments. Strainers should be used on raw water samples, and a proper maintenance schedule must be followed. Since these instruments count and size particles, each counter produces several channels of data. This data is most useful when trended, so provision should be made for recording and storage.

1.2 UNPACKING UNIT

When unpacking the PC3400 it is important to follow the following guidelines.

1. Open box right side up.
2. Carefully remove and examine packing material for any loose items that may have fallen out of containers during shipping.
3. Carefully remove items from the box. Verify all items listed on the packing list were received. Contact the factory immediately if any items appear to be missing.
4. Your PC3400 may include the following items.
 - ❑ Water Weir Kit (if specified) which consists of the following items:
 - Qty 1 flow control weir PN: 34905
 - Qty 2 mounting arms PN: 34950
 - Qty 2 weir clamps PN: 34960
 - Qty 1 Sample Drain Cup PN: 34970
 - Overflow Tubing (5/8 in ID X 5 ft) PN: 11430
 - Weir Inlet & Drain Cup Tubing (3/16 in ID X 5 ft) PN: 11425
 - Sensor Tubing (1/8" ID x 6 ft) PN: 11420
 - Qty 1 400 Micron In-Line Strainer (Optional, Recommended For Raw Water) PN: 9875
 - ❑ Cleaning Kit which consists of the following
 - Qty 1 cleaning brush PN: 34400
 - ❑ RS-485 Communications cable (Optional) PN: 34870
 - ❑ RS-232 Data Download Cable (Optional) PN: 34850
 - ❑ Software
 - TracData - Data Log Download Software (Optional) PN: 34600
 - TracWare (Optional) PN: 34650
 - ❑ Qty 1, Operations Manual

1.3 UNIT LABELING

Each PC3400 particle counter has a serial number label attached to the inside of the front door of the unit. Please refer to this information when inquiring on your particular unit.

1.4 FEATURES AND BENEFITS

On-line Particle Counter model PC3400 is intended for the determination of particle count and size distribution in a variety of liquid streams. Major applications include monitoring filter performance in potable water treatment plants, detecting contaminants in clean liquids, measuring particle size growth as a function of flocculation or precipitation, detecting particle shedding in medical device testing, and measuring suspended metal oxide corrosion products in steam Generation power plants. Particle counting is generally more sensitive than turbidity measurements for early detection of process changes such as filter breakthrough or contamination of an ultrapure liquid.

The sensor is designed to detect particles in the 2 to 750 μm range (upper limit defined by flow cell size), and size particles in the 2 to 125 μm range (any particles larger than 125 micron will be sized as $>125 \mu\text{m}$). The PC3400 uses a light blockage method to determine particle size and count. The light source is an infrared laser diode.

The analyzer features an entirely external sampling and measurement system which prevents sample leaks from damaging sensitive electronic components. The 750 μm x 750 μm flow cell is easy to access and clean. The constant head, flow control weir ensures stable, reproducible flow and accurate particle counts.

The PC3400 has a LCD backlit display which allows the user to see the individual size ranges and particle counts in each range. The display also provides the cell condition readout, which is an indication of the sensor's cleanliness and allows the user to know when cleaning is necessary. It is recommended to clean the sensor when the cell condition drops by more than 10% from the reading obtained after the previous cleaning.

Integration to the customer's SCADA / DCS can be accomplished either via analog 4-20 mA outputs (4 output channels), or by using the digital communication features. RS/485 and RS/232 communication ports are standard on the PC3400, and an Ethernet connection is optional. Using these communication ports, the customer can communicate to the PC3400 via Modbus (RTU, or TCP). Option for Profibus is also available (contact factory for more details).

The PC3400 has a built in data logging feature that allows the unit to record over 60,000 sample strings. A single sample string includes size bins, counts in each bin, cell condition, laser condition, and analog inputs (optional). The data is downloaded to a computer using Chemtrac's data download utility software. Once downloaded, the data can be exported to a spreadsheet program such as Excel. For instant trend viewing, a graphical trend of the last 60 recorded readings is also provided on the unit's display.

Another option for viewing and collecting the data from a one or several PC3400's is to use Chemtrac's TracWare software. TracWare also provides the user with the ability to customize particle size ranges, change sampling duration and frequency, plot trends, and prepare reports. The user must provide the personal computer for running TracWare.

Another unique feature of the PC3400 is its ability to perform Automatic Sizing Calibration via the user menu and front panel keypads. No software or computer is required to calibrate the PC3400.

Note

Ninety-six particle counters can be multi-dropped on a RS485 serial communications loop. The maximum network length is 4000 ft. To avoid problems with communications, be sure to contact the factory to discuss how the RS/485 network will be laid out in the plant. A poorly designed network can result in excessive communication timeouts.

1.5 SPECIFICATIONS

GENERAL

Laser Type:	Solid-state Laser Diode (780nm)
Flow cell Dimensions:	750 μ m x 750 μ m
Cell Material:	Nituff™ coated aluminum (or PEEK plastic – Optional)
Viewing Windows:	Sapphire
Detection Range:	2-750 μ m
Sizing Range:	2-125 μ m
Flow rate:	75 m/min
Resolution:	Better than 10% at 10 μ m (ASTM-F658)
Coincidence:	<10% at 20,000 cnts/mL (2 μ m)
Size Channels:	8, user-selectable
Count Format:	User selectable: Counts per ml, Counts per 100 ml, or Raw Counts
Laser Diode Life:	MTBF > 75,000@55°C
Measurement Type:	Volumetric, counts/mL
Local Display:	Graphical, 8 size channels displayed at once, unit info/diagnostic screen.
Display Readout:	Size channel, counts, cell condition (0-100%), laser condition (0-100%), unit address, # of stored data records, sample period, sample frequency, flow rate
Data Storage:	>60,000 Sample Strings, Use defined logging interval (1-254 minutes)
Graphical Trending:	Last 64 recorded readings, User selectable value trending (e.g. Total Counts, Bin 1, Cell Condition, Analog Input, etc)
Keypad Interface:	All instrument settings may be modified via the keypad interface, including instrument calibration (some settings require password)
Serial Communication:	2 wire RS485 (Network) and RS232 (Local)
Communication Protocols:	Standard: MODBUS RTU (RS485). Optional: MODBUS TCP (Ethernet), PROFIBUS DP
Analog Outputs:	2, 4, 6 or 8 channels, 4-20 mA (optional)
Analog Inputs:	2, 4, 6 or 8 channels, 0-5V. 0-10V. 0-20 mA , 4-20 mA (optional)
Alarm Relays:	2 Dry Contact Relays, 250V, 5A (optional)
Power Requirements:	100-240 VAC, 1A, 47-63 Hz
Operation Temperature:	32° - 120° F (0° - 50° C)
Dimensions:	12" W x 11" H x 5" D (305 mm W x 280 mm H x 127 mm D)
Weight:	7 lbs (3.2 kg)

SAMPLE REQUIREMENTS

Water Temperature: 32-120° F, (0-50° C), (non-freezing)
Sample Head: 30" (762 mm) water min.

CALIBRATION

Standards: Latex (PSL) microspheres. Standard sizes used for factory calibration: 2, 3, 5, 7, 10, and 15 µm (nominal)
Method: ASTM F658
Recommended calibration frequency: Yearly

TracWare COMPUTER REQUIREMENTS

Operating system: Windows 98, NT, 2000, XP, Vista, 7
Computer: Intel or AMD processor (1 GHZ or faster); at least 256 MB of RAM, 250 MB of hard drive space, CD ROM drive

1.5.1 WIRING SPECIFICATIONS

The following pages list the wiring requirements of the PC3400:

❑ RS 485 Communications Cable

Belden Wire & Cable – Paired Cable	
For Low Capacitance for EIA RS-485 Applications	
Trade Number:	9841
NEC	CM
UL AWM	2919
CEC	CM
Conductor AWG:	24
Conductor Stranding:	(7x32)
Conductor DCR:	78.7 ohms/km
Conductor Type:	TC
Insulation Type:	Polyethylene
Jacket Type:	PVC
Shield Type:	Beldfoil® + TC Braid
Nominal OD:	0.232" (5.893mm)
Nominal Capacitance:	12.8 pF/ft. (42.0 pF/m)*
Nominal Capacitance:	23.0 pF/ft. (75.5 pF/m)**
Velocity of Propagation:	66%

Description:

Tinned copper, polyethylene insulated, twisted pairs. Overall Beldfoil® aluminum-polyester shield. 24 AWG stranded tinned copper drain wire. Overall tinned copper braid shield (90% coverage). Chrome PVC jacket (100% coverage). 30V 80° C

*Capacitance between conductors

**Capacitance between one conductor and other conductors connected to shield.

❑ **Power Cable (not supplied with units shipped to EU)**

3-Core Round	
CMA Ref. No.	2182Y
Bar Code No.	H03VV-F
BASEC approved	
CSA:	0.5mm"
Current Rating:	3A
Voltage Rating	300/300/V
Nominal Dia.:	5.8mm

1.6 BASIC THEORY OF OPERATION

The Chemtrac Model PC3400 particle counter is designed to "count" particles 2 to 750 micron in diameter and "size" (i.e. sort by size) particles ranging from 2 to 125 microns in diameter. Particles larger than 125 micron will be sized as >125 micron particles. Particles are divided into size ranges and the number of particles counted in each of these ranges can be reported as counts per milliliter, counts per 100 milliliter, or Raw Counts.

The particle counter consists of an optical sensor and counting electronics. The sensor consists of a 780 nm infrared laser diode, a light detector, and two transparent "windows". The detector converts light energy into electrical voltage. The laser light is directed through both windows and on to the detector. Sample flow passes between the windows, so that any particles in the sample will pass through the laser beam. Each particle will block a small percentage of the light that hits the detector, changing the electrical output of the detector. Since the particles are moving rapidly, each particle will produce a short electrical pulse at the output of the detector. The amplitude of the pulse correlates to the size of the particle. The output of the sensor is a stream of pulses of varying amplitude, each corresponding to a particle. This type of device is known as a light blocking or light extinction sensor, see Figures 1.

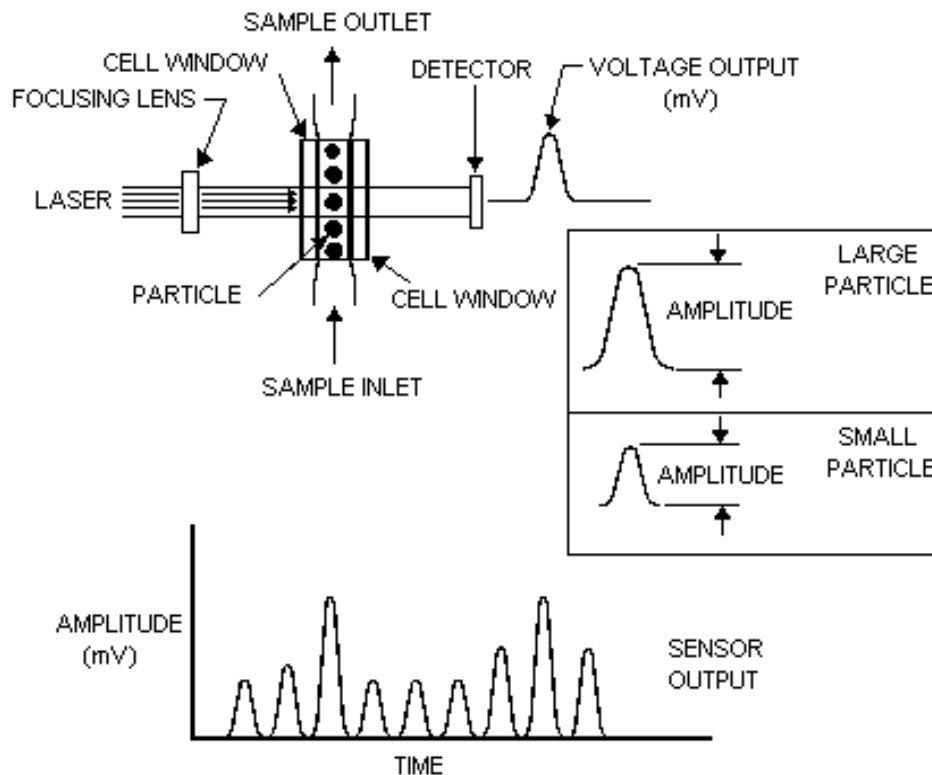


Figure 1 Light Obscuration Measurement (Diagram 1)

The amount of light blocked from the detector is the sum of the light absorbed by the particle and the light scattered or reflected by the particle. The size and composition of each particle will determine how much light is scattered and how much is absorbed. Carbon particles will absorb most of the light and scatter very little of it. Organic particles have an index of refraction close to the value of water, and tend to refract more light. The result of this is that an organic particle 5 microns in size will block less light than an inorganic particle of the same size, and will appear smaller to the particle counter. For this reason, Giardia and Cryptosporidium will be counted in size ranges several microns below their actual size. The orientation of the particle as it passes through the light beam will also affect how much light is blocked. These factors make it necessary to count particles over a range of sizes as opposed to an exact size.

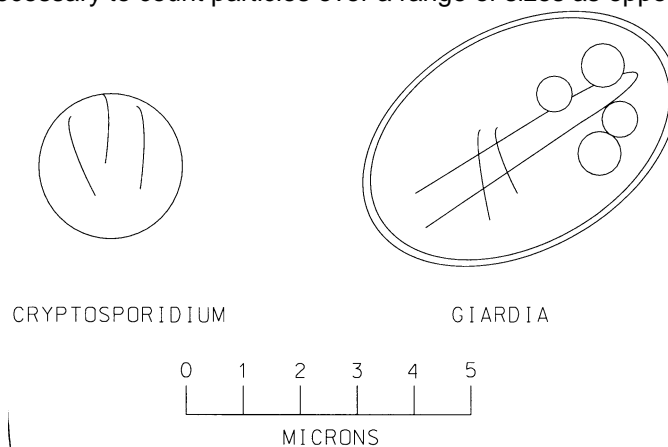
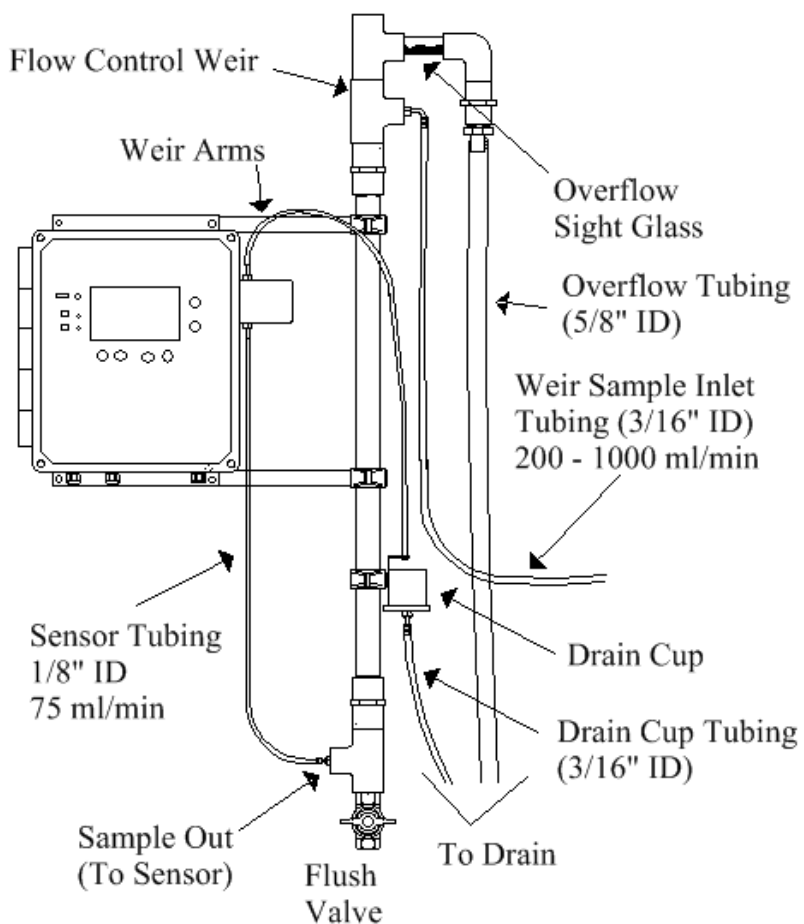
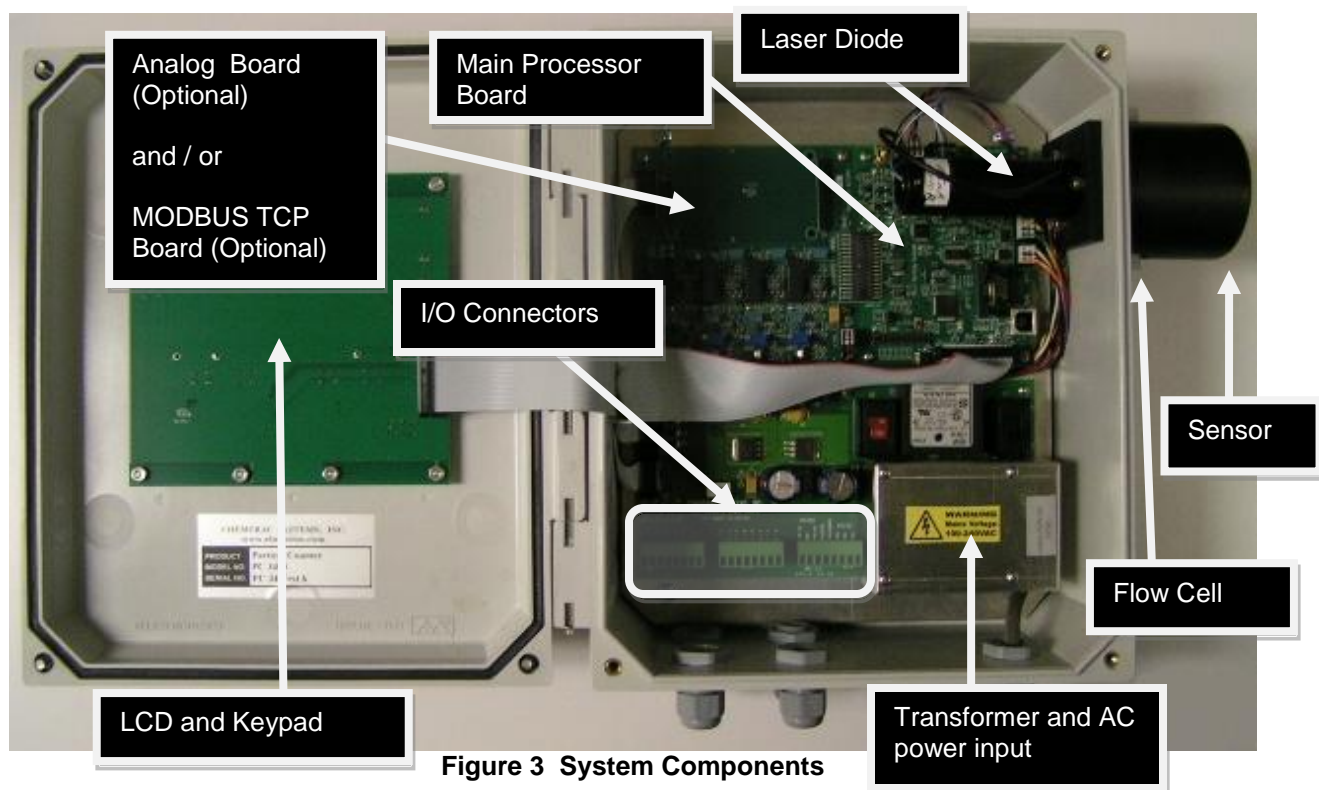


Figure 2 Particle Size Comparison

The sensor output is fed into the counter electronics, which sorts the pulses according to amplitude and counts them. In a typical application, three or four ranges might be used. The first one might be set to count particles in the range from 2 to 5 microns, the second 5 to 10, the third 10 to 15, and so on.

The Model PC3400 typically operates at a flow rate of 75 ml/min. The Flow Control Weir, which is a constant head overflow device, is used to maintain this flow. Flow adjustment is accomplished by moving the drain cup up or down the weir assembly, which decreases or increases flow (See Section 4.1.3). Other flow rates can be used and are set via the user menu. However, the instrument is calibrated at the factory for a flow rate of 75 ml/min and the sizing accuracy will not be accurate if that flow rate is changed by more than 10% and the unit is not recalibrated at the new flow rate. If your application requires the flow the sensor to be something different than 75 ml/min, then contact the factory for assistance.



2.0 INSTALLATION

NOTE

While installing the PC3400, avoid excessive vibration, dropping, or banging on the unit. The optics inside the sensor can be knocked out of alignment if the unit is improperly handled.

2.1 WEIR ASSEMBLY

Prior to mounting the PC3400, it will be necessary to assembly the weir. The weir comes unassembled in three pieces. Those three pieces are simply screwed together to look like the weir shown in the below diagram.

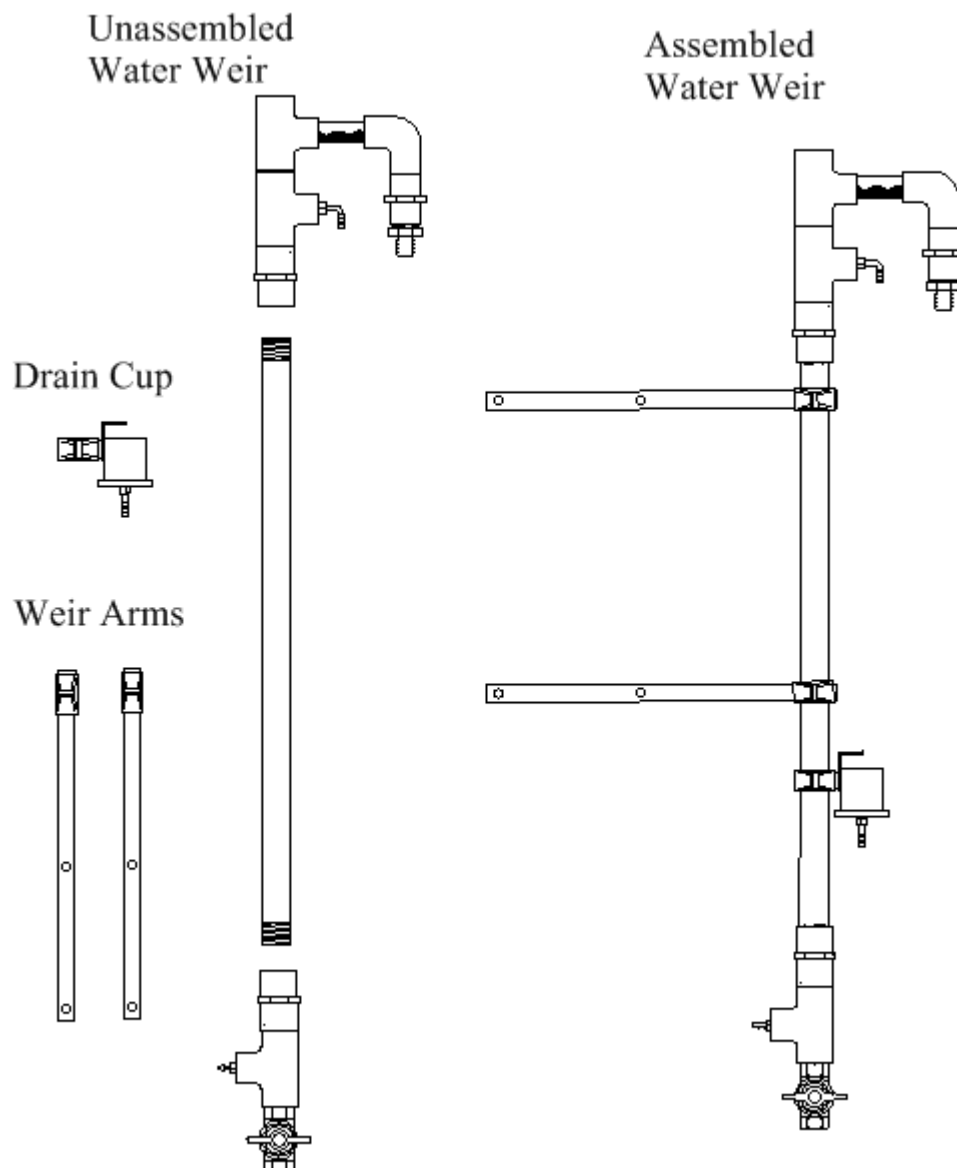


Figure 5 Weir Assembly

2.2 MOUNTING

See Figure 6 below for mounting details. The total space needed to mount the PC3400 is an area 23 inches wide and 43 inches tall. The PC3400 should be permanently mounted in an upright position using the mounting holes on the back of the counter. The mounting hole dimensions are 6.0 inches horizontally and 10.75 inches vertically.

The weir should be mounted using the supplied hardware (weir mounting arms) and the weir height adjusted so that the top of the weir is approximately 10 to 12 inches above the top of the PC3400.

Once the PC3400 and Flow Control Weir are mounted, the tubing can be attached to the Weir and Sensor as detailed in Figure 4. Make the sensor tubing going between the sensor and drain cup long enough to reach the drain cup with it slid all the way down on the weir. It is also recommended to leave a little extra tubing on the bottom of the drain cup. Final adjustment to the drain cup position and tubing lengths will be made in section 4.1.3.

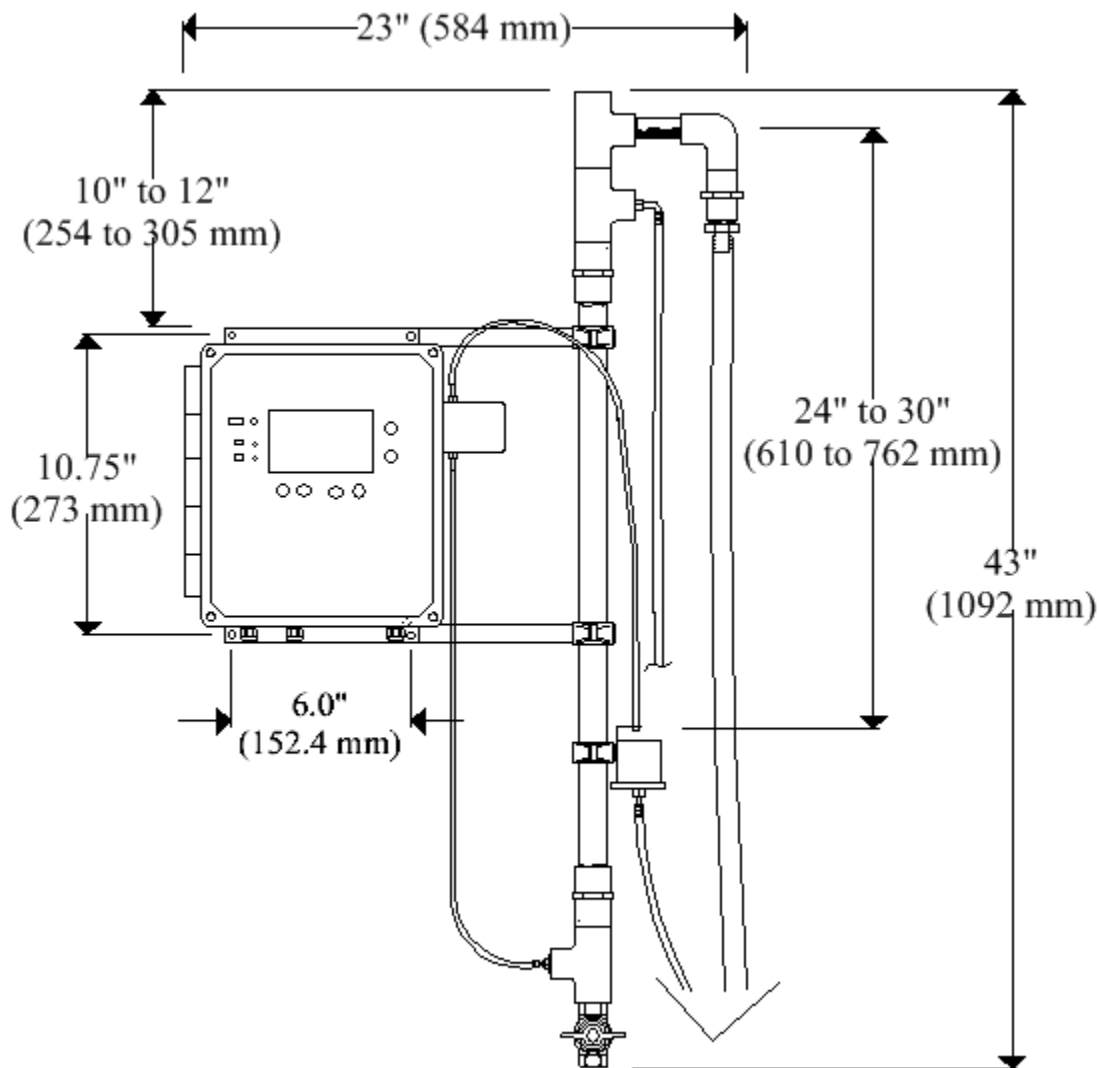


Figure 6 System Dimensions

2.3 WIRING

WIRING SAFETY - Please observe the following safety precautions prior to wiring the unit.

- ❑ Power must be locally fused or switched prior to entering the unit.
- ❑ Power should be hardwired to the unit. Flexible power cords are not recommended around water.
- ❑ Disable power circuit prior to hardwiring the unit.
- ❑ Observe polarity when connecting the unit. The unit will not work and can be damaged if polarity is crossed.
- ❑ All wire connections must be tinned prior to connecting to ensure proper contact and to prevent corrosion.
- ❑ The unit must be connected to an Earth Ground. Note: Poor grounding can produce electrical noise in the instrument which could affect the instrument's accuracy.
- ❑ If using the original power cord supplied with your unit, make sure the proper AC voltage is set on the 115/230 VAC Select Switch. Once checked for proper AC power requirements, remove WARNING! Label to gain access to the power ON/OFF switch (see Figures 7 and 8).

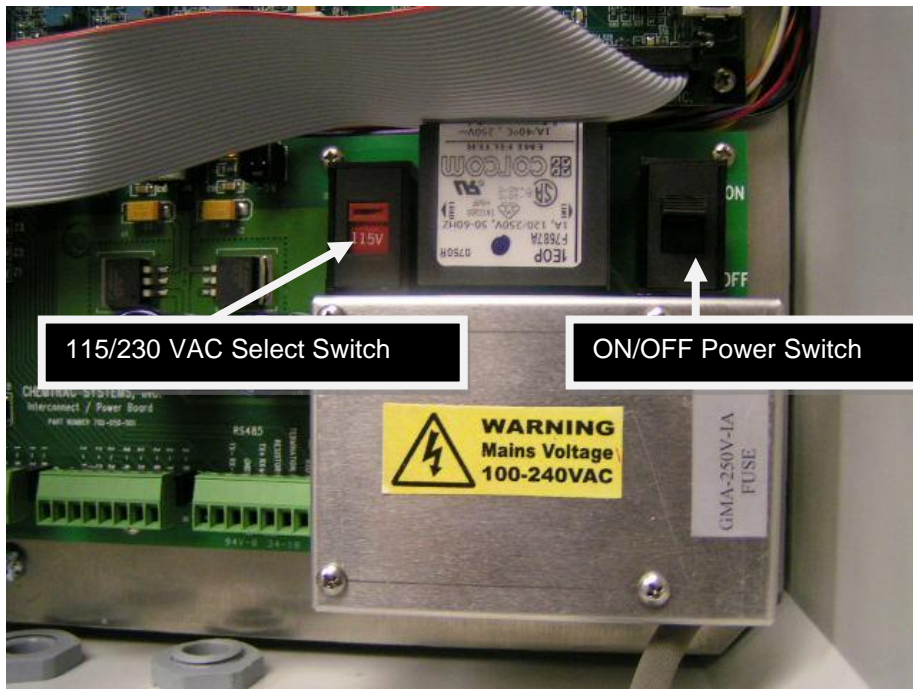


Figure 7 115/230V and Power Switches

WARNING! Check AC voltage setting prior to removing this label

Figure 8 Warning Label

NOTE

The particle counter is one of the most sensitive and precise on-line instruments in use in water treatment today. In order to achieve and maintain optimal performance, it is imperative that proper installation and operational procedures be followed.

2.3.1 WIRING OF MAINS POWER

Following the installation, guidelines outlined in this manual should result in proper operation with minimal problems. Individual plant requirements and layouts will vary, resulting in alterations to the procedures.

1. Open the enclosure by first unscrewing all 4 screws on the front cover.
2. Locate the 115/230 VAC select switch and verify it is in the proper position for your mains power.
3. Remove the 4 screws that hold the aluminum protective cover and unplug the 3 position green connector to gain better access to the connector screws.
4. During installation, a local isolation point must be supplied.
5. Disable the power circuit that will be used to supply power to the unit.
6. With the power off, feed the electrical supply line through the compression fitting on the bottom right side of the unit.
7. Electrical power should be connected as shown in Figure 9. On the PC board, under the green connector, it is labeled from left to right, “NEU”, “GND”, and “HOT”

NOTE

When feeding wire into unit it is always important to feed through the compression fitting that is closest to that wire connection.

- Insert the neutral wire into the left terminal labeled “NEU”.
- Insert the ground (earth) wire into the middle terminal labeled “GND”.
- Insert the hot wire into the right terminal labeled “HOT”.

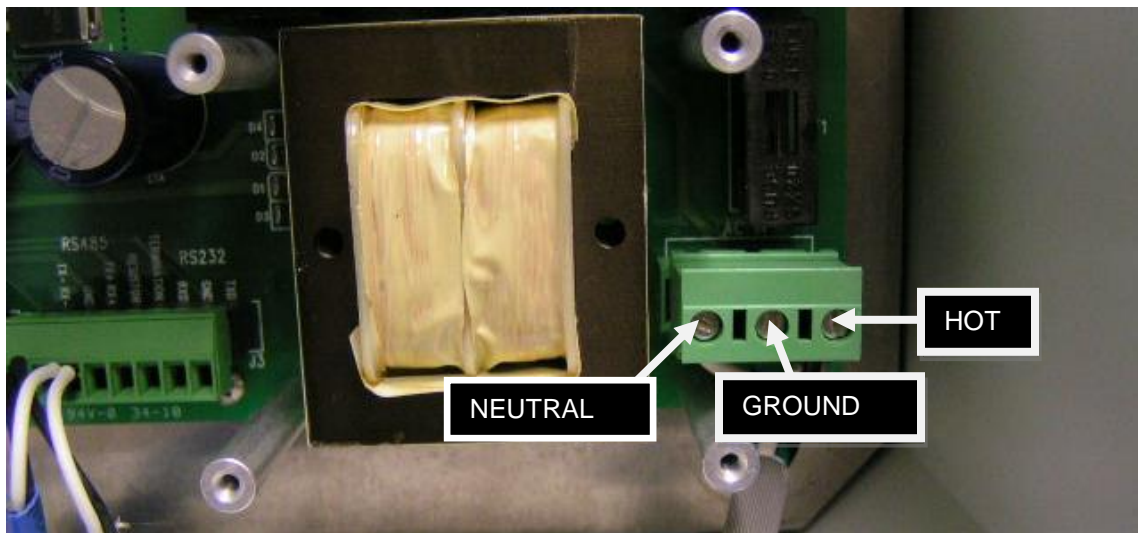


Figure 9 Power Terminal Block

After wiring of mains power is complete, and after verifying the 115/230 VAC select switch is in the right position, enable the external power circuit and flip the “On/Off” switch to the “On” position and verify the PC3400 display comes on.

2.3.2 WIRING OF RS-485 COMMUNICATIONS

If utilizing RS-485 Communications, connect the RS-485 Cable to the RS-485 terminals shown on the following page. Ensure shielding is tied together and connected to ground at one end.

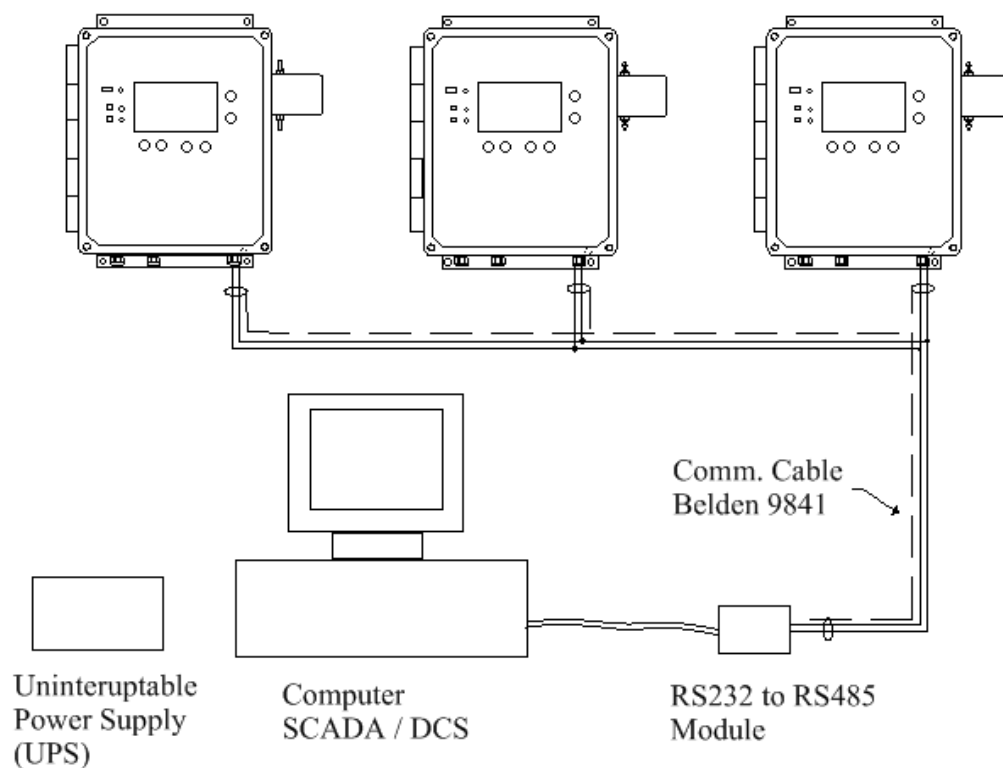
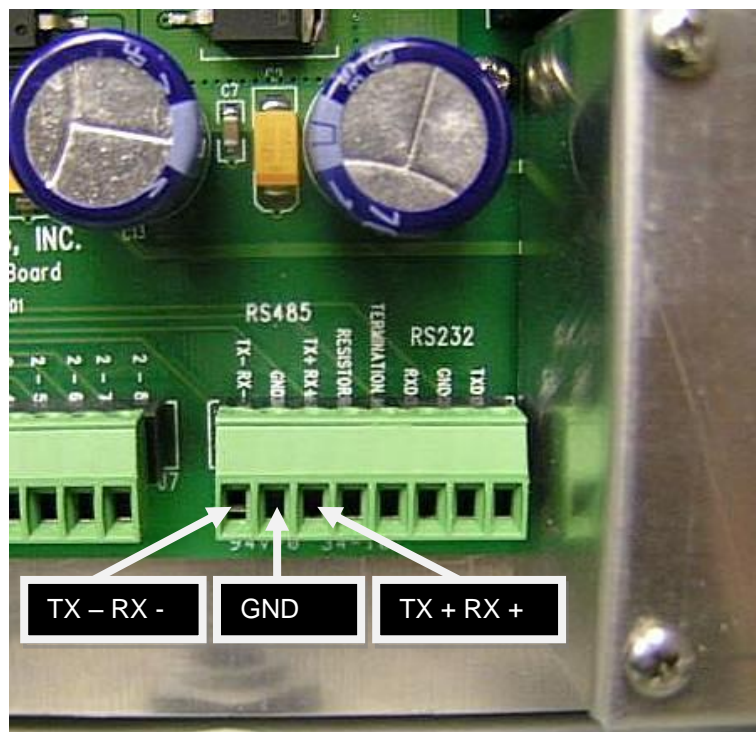


Figure 10 RS-485 Communications

2.3.3 WIRING OF ETHERNET COMMUNICATIONS

The optional MODBUS TCP card with RJ45 connector (PN: 34791) is required to utilize the optional Ethernet Communication capability. The location of the MODBUS board and RJ45 connector are shown below. Route the CAT5 cable with RJ45 male connector through the strain relief fitting located on the bottom of the PC3400 enclosure and connect it to the female RJ45 connector as shown.

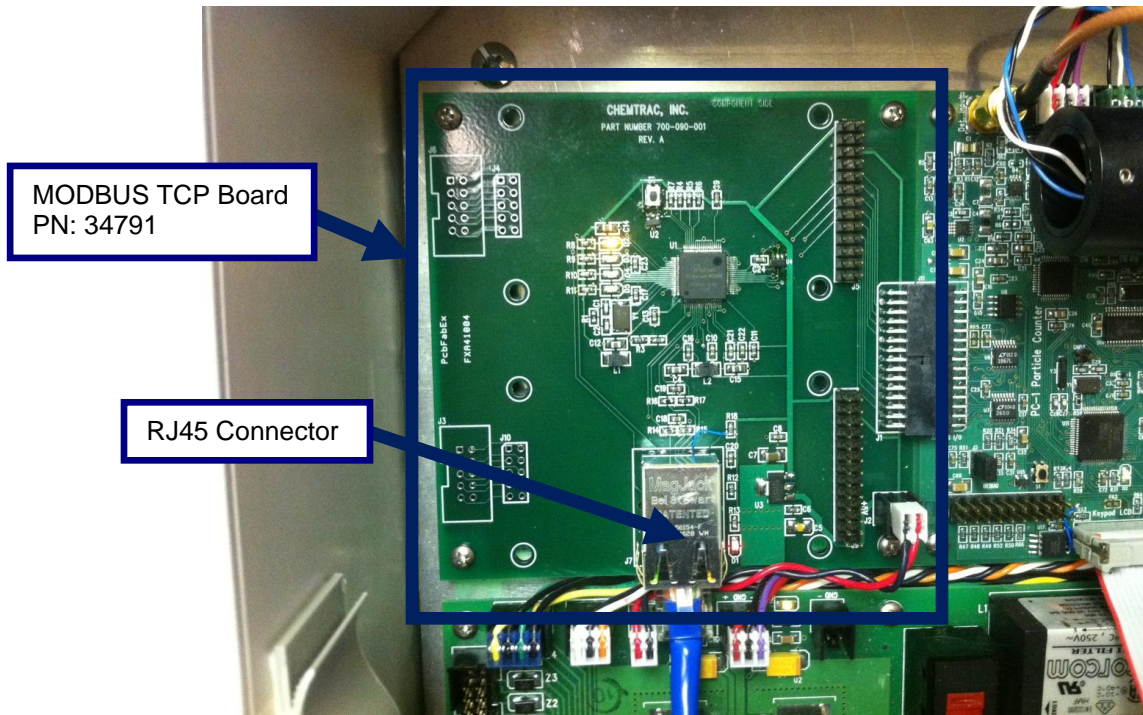


Figure 11 Optional MODBUS TCP Communications

2.3.4 WIRING OF ANALOG I/O

When utilizing 4-20 mA outputs, 4-20 mA inputs, voltage inputs, or relays, signal wiring will be done at terminals J6 (Analog One) and J7 (Analog Two). Because of the variety of Analog I/O options available, it is not practical to identify the precise wiring locations in the scope of this manual. A label adhered to the inside of the door of each PC3400 will indicate the precise wiring locations for any optional I/O included with each individual particle counter.



Figure 12 Analog I/O Wiring Terminals

2.3.5 ANALOG INPUT CONFIGURATION

The PC3400 provides for up to eight analog inputs with optional Analog Input cards. (PN: 34761) Each card provides four inputs. The analog inputs can be configured for either 0 - 5 VDC, 0 - 10 VDC or 0 - 20 mA (4 - 20 mA). The input type is selected via the General Setup -> Outputs & Alarms menu. (See 3.3.3.4) Once the input type is determined, jumper settings on the analog input card must be configured to match the input type. See Figure 13.

Information from the analog inputs is available over any of the digital communications options (RS232, RS485, Modbus TCP). In addition, analog input data, for the first 4 input channels, is logged in the instruments memory. The data is logged based on the interval selected in the General Setup -> Log Frequency menu. It is also possible to select one of the analog input signals for trending on the Trend Graph. (See 3.3.3.1)

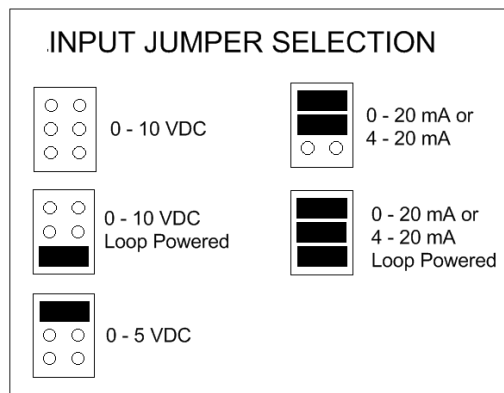


Figure 13 Analog Input Type Jumper Selection

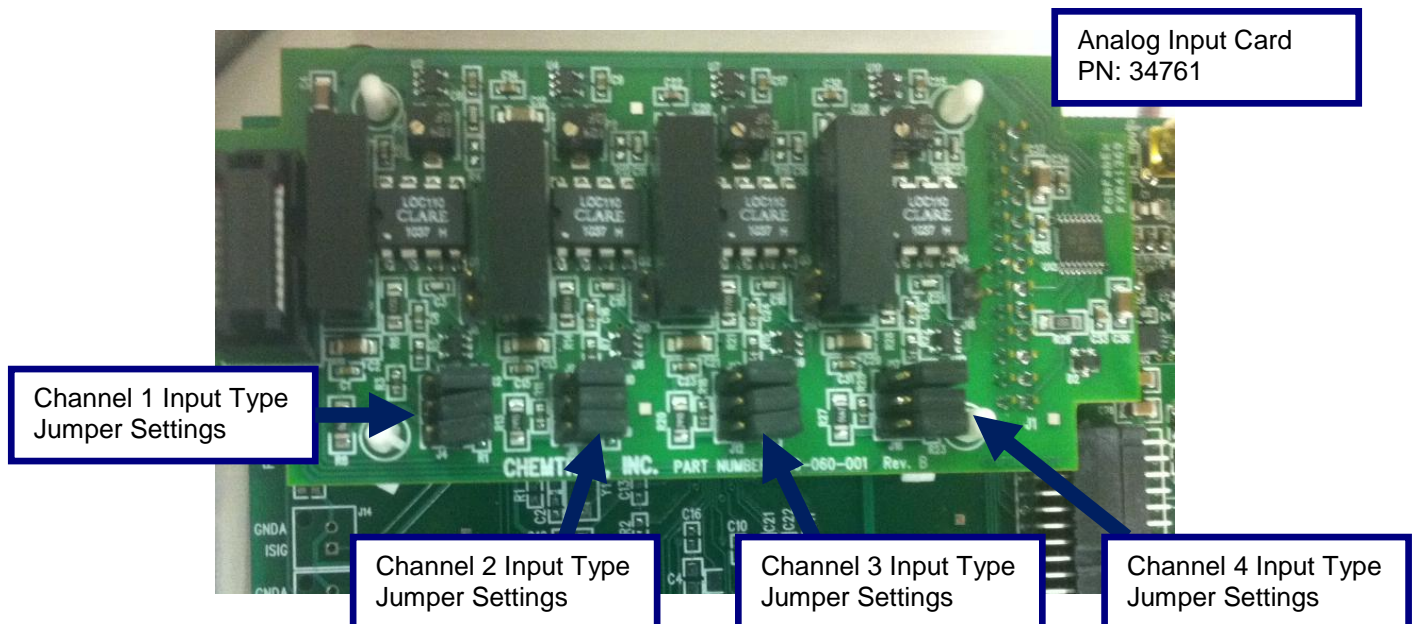


Figure 14 Optional Analog Input Card

2.4 SAMPLE SETUP

2.4.1 SAMPLE CONSIDERATIONS

The high sensitivity of the particle counter makes sample handling and delivery critical for proper operation. Poor sample point selection and/or improper sample line installation can result in a substantial loss of accuracy.

It is not difficult to achieve proper sample delivery in virtually any treatment plant. The important thing is to make sure the sample is properly representative of the process stream. There are three ways in which the sample can be distorted:

1. Adding particles to the sample stream. Choosing an improper location for the sample tap, such as the bottom of a pipe where sediment can accumulate, or an open sample point where particles can be introduced from outside the process usually causes this.
2. Losing particles from the sample stream. Long sample lines can cause particle dropout, especially at low flow rates. If the sample line must be long (more than 10 or 15 feet) then it will be important to keep the sample flowing swiftly (i.e. 4 ft per second) to prevent particulate from settling out in the tubing. The higher flow rate will also help keep the tubing cleaner and thereby help minimize particle shedding which can be caused by fluctuations in flow.
3. Altering the particle distribution. Sample pumps can chop up larger particles creating more small particles. Valves and other obstructions can cause "shedding". Particles collect on cracks and edges and then break loose later. "T" fittings can cause larger particles to miss the sample line because they can't make the sharp right angle "turn".

Of course, it is seldom possible to avoid all of these pitfalls. Frequently valves are needed to control sample flow rates, or pumps are used to get the sample to a usable point. The important thing is to minimize these problems. Filtered water can be pumped with fewer problems than raw or settled, since only very small particles are usually present, and they are less likely to be broken up. Ball valves or other types with minimal edges to trap particles can be used. "Y" fittings can be used instead of "T's".

2.4.2 Sample Taps

The diagram below (Figure 15) shows proper and improper sample locations on a process pipe. These are the same as for any instrument requiring a representative sample flow.

Make sure that the sample point has the minimum pressure available at all times to provide enough flow. The Chemtrac sensor requires approximately 2 feet of head to maintain a 75-ml/min flow, so ensure there will be a minimum of 2 feet of head throughout the entire filter run (i.e. during high head loss towards the end of filter run).

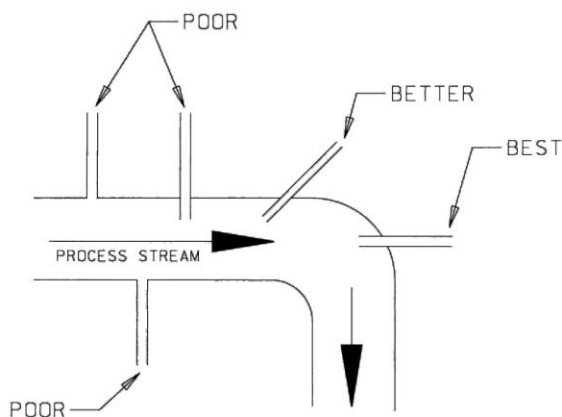


Figure 15 Sample Tap

2.4.3 Flow Control

Since all particle count data must be based on a sample volume, flow control is crucial to accurate and repeatable performance. The simplest and most effective way to achieve constant flow is using the flow control weir. As long as enough flow is delivered to maintain some overflow in the weir, a constant flow will be present in the sensor. If this requirement is maintained, flow will only be altered by clogging of the sensor flow cell or fouled tubing and/or barb fittings. The Chemtrac particle counter comes equipped with a sample drain cup.

2.4.4 Flow Control Weir Assembly

The flow control weir assembly is designed to deliver constant flow to the sensor despite changes in source pressure. Overflow (as seen through the clear horizontal pipe) must be maintained to ensure that full flow is achieved. The clear horizontal pipe at the top of the assembly gives an indication of the amount of overflow. If the level in this pipe reaches the top, or if there is no overflow at all, the flow to the sensor will be affected. It is best to keep the overflow at the midpoint in this pipe to allow for variations in source pressure. An inlet flow to the weir of at least 200 mL/min and not greater than 1000 mL/min should be delivered to the weir to ensure proper flow through the sensor.

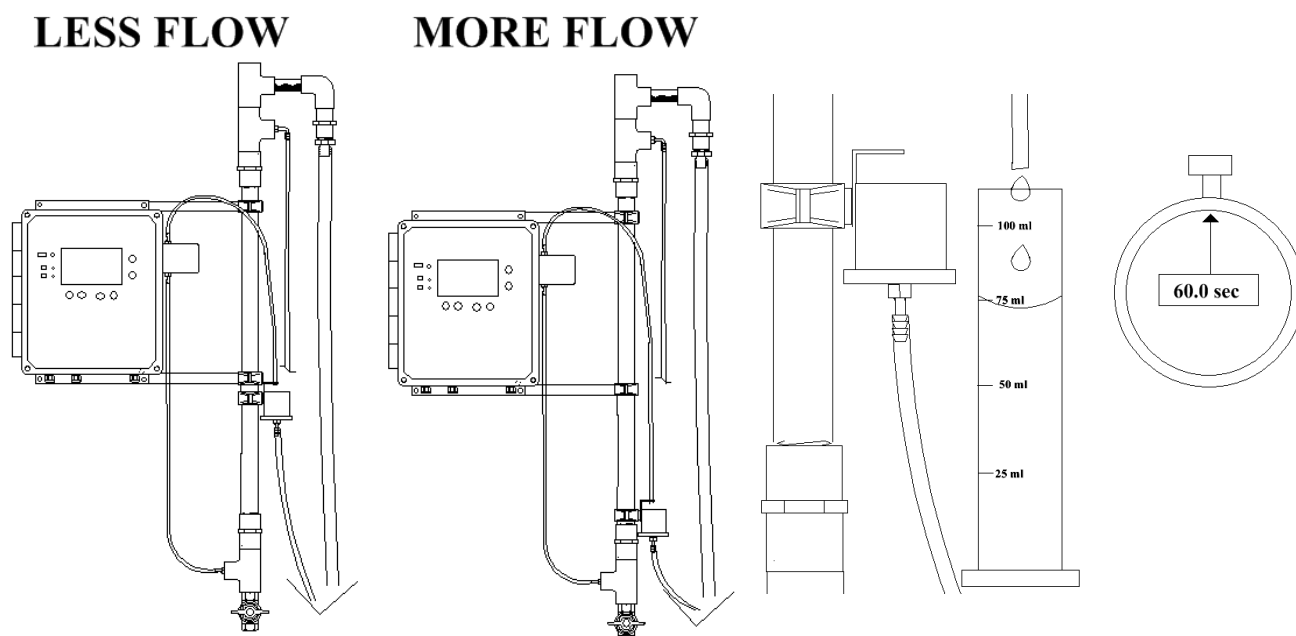


Figure 16 Sensor Flow Rate Adjustment

The flow rate through the sensor is adjusted by moving the Drain Cup up or down the vertical pipe until a 75 ml per minute flow is achieved. Measure the flow rate using a graduated cylinder and a stopwatch. Once the flow is set, the flow will remain stable as long as some amount of overflow is maintained at the top of the weir. As seen in figure 6, the head required to achieve the 75 ml/min flow rate is approximately 24 to 30 inches (as measured from the clear horizontal pipe down to drain cup's tubing holder). Changes in water temperature, as well as the sensor & tubing getting dirty, will affect the flow rate.

As part of the regular maintenance cycle, periodic checks should be made to the flow rate. If the flow rate is found to be low, try replacing the sensor tubing if it looks dirty and clean the sensor as outlined in section 3.5. If this maintenance action does not achieve the proper flow rate, then adjust the Drain Cup up or down the weir to obtain the proper flow rate of 75 ml/min.

The weir assembly and PC3400 should be mounted at an elevation sufficient to achieve overflow at minimum source pressure. A ball valve can be used to regulate the flow into the weir assembly.

IMPORTANT NOTE ON WEIR INSTALLATION

Weir arms are provided to help simplify the mounting of the Weir. However, some users prefer to mount the Weir directly to a back plate versus using the Weir arms. Not using the weir arms can make it easier to remove the PC3400 if the equipment needs to be serviced. If the weir arms are not to be used, just ensure two things:

1. Make sure the clear horizontal pipe at the top of Weir is higher than the top of the PC3400 by 10 to 12 inches. This ensures flow will start reliably through the sensor. If the Weir is mounted too low, the flow may not re-start reliably through the sensor if flow was ever lost for any reason.
2. Mount the Weir to the right of the unit (as shown in figure 16) and insure there is a minimum of 4 inches between the Weir and the sensor (the sensor protrudes from the top right side of the enclosure). The cap on the sensor may need to be removed at some point for maintenance and mounting the Weir too close to the sensor will make it impossible to remove the cap without first removing the weir.

2.4.5 Problems with Air Bubbles

Bubbles can be introduced into the sample through various means (air in-leakage from loose fittings, degassing from temperature changes and/or pressure changes, etc.). The particle counter will count bubbles as particles if they are large enough, just as a turbidimeter will detect air bubbles as turbidity.

The flow control weir is designed to aid in the removal of air bubbles. However, air bubbles that have formed due to degassing are difficult to remove using the flow control weir. In some cases, the sample may need to be kept pressurized through the sensor to avoid the formation of bubbles. Contact the factory for assistance if you suspect air bubbles are interfering with the measurement. Air bubbles forming in the sensor tubing is a possible indication that air bubbles may be a problem.

2.4.6 Initial Startup

It is very important to flush out all taps and valves before connecting the particle sensor to help avoid plugging.

Once installation is complete and the sample is hooked up to the sensor, the sample lines may still be somewhat dirty and not truly representative of the actual particle concentration at the sample point. Typically the sample lines will sufficiently flush and stabilize within 15 to 30 minutes. If the particle counter output is being trended, it is easy to tell when the lines have been sufficiently flushed, as the data will level out.

Once the counts have appeared to stabilized, a quick test can be done to verify the PC3400 is not experiencing any sort of noise issue that can arise due to issues with poor electrical grounding. Simply pinch the tubing coming off the top of the sensor (which is the tubing going to the drain cup). Pinching this tubing will stop flow through the sensor. If the flow is stopped and the tubing held stationary, the counts should drop to zero within 1 to 2 minutes providing the sample is filter effluent (use DI water if filter effluent is not available or is higher than 0.3 NTU).

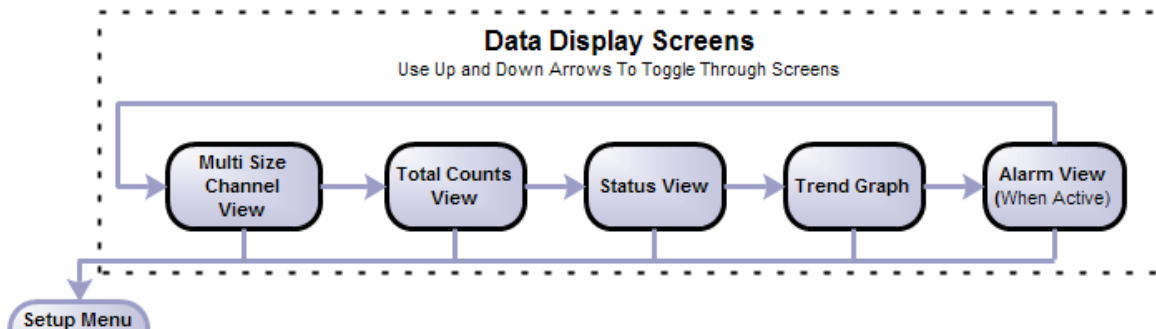
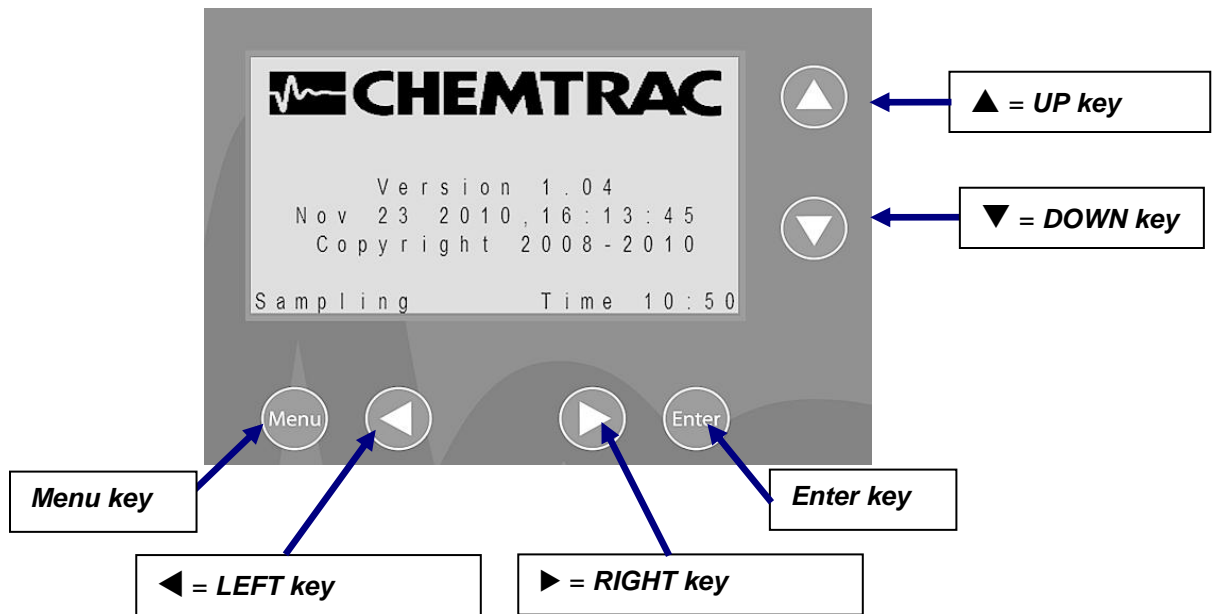
With water flowing through the sensor, a check should be performed to make sure the PC3400 has a laser and cell condition reading of 90 to 110% as seen on the Status screen. Try cleaning the sensor as detailed in section 3.5 if the cell condition is below 90%. Contact factory for assistance at 770-449-6233 if the cell condition does not come up after cleaning, and/or if the laser is outside of the 90 to 100% range. NOTE: Laser and Cell condition are temperature dependent, so water and/or air temps near freezing or above 100 degrees F can cause these readings to change. The PC3400 is working properly as long as the laser and cell condition reading are in the 90 to 100% range with water and air temps in the 40 to 90 degree F range.

At this point the unit should be ready for user customized menu setup and operation.

3.0 PARTICLE COUNTER OPERATION

3.1 USER INTERFACE (Key Pad)

The PC3400 is equipped with user interface keys, and LED indicators. The interface keys are up (▲), down (▼), left (◀), right (▶), and the Menu and Enter function keys. On power up, you see the screen below. In the Appendix of this manual there is a flow chart of display and menu screens.



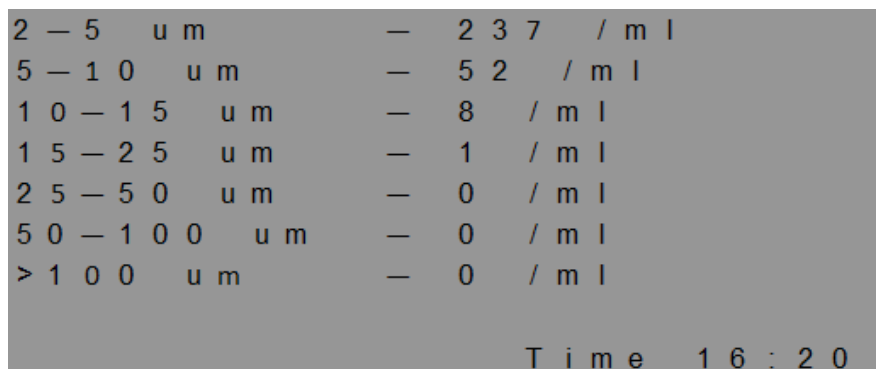
There are three LED lights to the left of the graphical display. These are:

- ❑ Power –Red LED that illuminates when there is power to the unit.
- ❑ TX – Yellow LED that illuminates when the unit is transmitting data.
- ❑ RX – Green LED that illuminates when the unit is receiving data.

3.2 READOUT / DISPLAY SCREENS

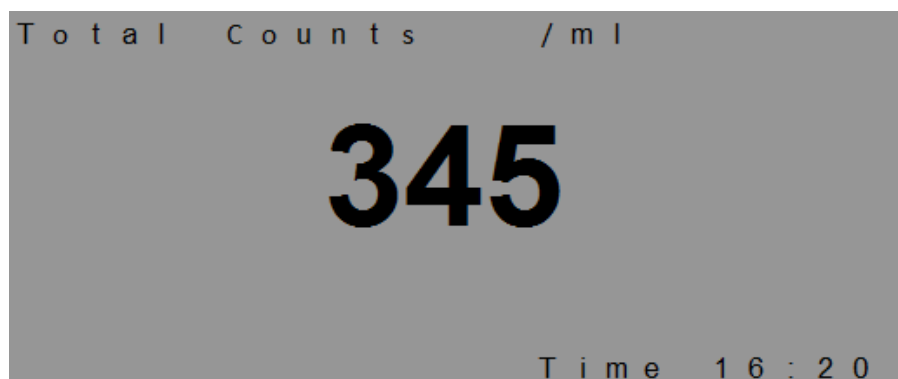
3.2.1 Main Display Screen

Upon completion of first sample period, the screen will update with the measurement results broken out by size range.



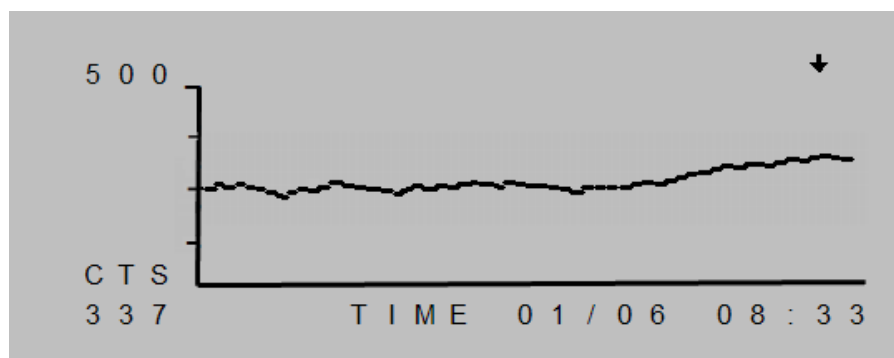
3.2.2 Total Counts Screen

Press the **Down Arrow** to view the Total Counts screen.



3.2.3 Trend Graph

Pressing the **Down Arrow** key again will bring up the Trend Graph screen. The cursor (the down arrow in the screen) can be moved across the graph by the left and right arrow keys. The samples viewed are the last 64 samples that are logged. Any of the logged values can be mapped to the Graph via the User Menu. This includes Total Counts, individual Bin counts, Cell Condition, Analog Inputs, etc.



3.2.4 Status Screen

Pressing the **Down Arrow** key again will access the Status Screen.

S T A T U S			
U n i t :	1	V e r :	1 . 0 7 h
S a m p l e # :	3 1 2		
M e m o r y :	4 5 %	D a y s :	2 5
S a m p l e P e r i o d :	1 5		
S a m p l e F r e q u e n c y :	6 0		
L a s e r :	1 0 0 %	C e l l :	9 8 %
F l o w R a t e :	7 5 m l / m i n		
S a m p l i n g		T i m e :	1 6 : 2 0

Unit Address: The units unique address which is used to identify the unit for digital communications (e.g. MODBUS RTU).

Ver: Shows the firmware version the unit is programmed with.

Sample #: Number of measurements taken since the unit was last powered on. This number will rollover back to 1 when the number reaches 65000. This number will reset to 1 whenever an “Exit & Save” is performed from the menu. The main purpose if the Sample # is just to provide an indication that the PC3400 is performing measurements at the proper interval.

Memory / Days: The PC3400 can hold up to 65,000 data strings stored in internal memory and the % value shown here indicates how full the memory is. The “Days” readout indicates how many days until the memory will be full.

NOTE: Once the memory is 100% full, the PC3400 will display “Overwrite”. This indicates that the PC3400 is writing the newest data over top of the oldest data in memory. Data that is written over will not be available for download. After downloading data, the user can erase the memory by going to Menu>Service Setup>Resets>Erase Data Memory.

Sample Period: Number of seconds that a measurement lasts. Default value is 15 sec.

Sample Frequency: Number of seconds between the start of measurements. Default value is 60 sec.

Laser: Percentage readout reflecting changes in laser operating current. This value is provided for diagnostic information only. Laser current will change as a function of laser temperature and age. The laser percentage will increase over the lifetime of the laser and also when ambient air or water temperature increases. With yearly calibrations, a laser percentage between 90 to 110% is considered normal.

Cell: Percentage readout reflecting the cleanliness of the sensor. The sensor should be cleaned after there has been a 10% decrease following the previous cleaning. Note: Changes in temperature which affect the laser percentage will also have an affect on the cell percentage. When the laser percentage drops as a function of cooler temperatures, a corresponding drop in the cell percentage is to be expected. With yearly calibrations, a cell percentage between 90% to 110% after cleaning is considered normal.

Flow Rate: Flow rate value entered into and being used by the PC3400 electronics to calculate count/ml or count/100ml data. Note: Standard factory calibration is performed at 75 ml/min. The user can change the Flow Rate value via the User Menu and set the actual flow rate to match (e.g. 60 ml/min), but particle sizing may not be accurate if the unit has not been calibrated at that flow rate.

3.3 USER MENU / SETUP SCREENS

NOTE:

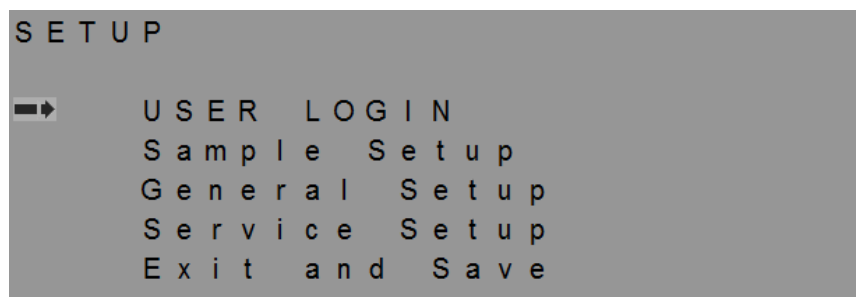
The PC3400 will not communicate (RS232, RS485 or Ethernet) nor will it perform any measurements while in the Setup menu. The PC3400 will exit the menu and return to normal operation if the unit is left in the Setup menu for 5 minutes with no activity.

NOTE:

When exiting the Menu, it is necessary to select “**Exit and Save**” in order to store any changes to permanent memory. Alternatively, if the Menu is exited by pressing the Menu button, the changes will be saved to temporary memory only and changes to settings will be lost if the power is cycled off and on.

If changes were made to the settings that you do not wish to keep, simply exit out of the menu using the Menu button (do not perform an “Exit and Save”) and then turn the unit off and then back on. This will erase any and all changes made to the menu since the last time an “Exit and Save” was performed.

Press the **Menu** button to access the PC3400 **SETUP** screen.



3.3.1 User Login

NOTE:

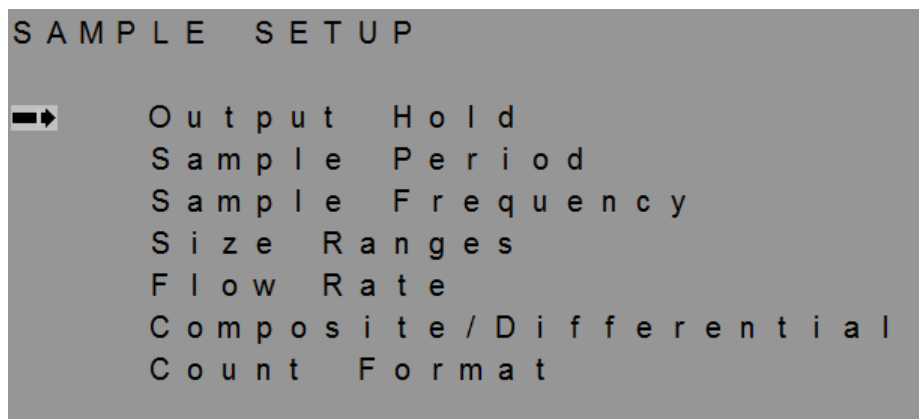
User Login is disabled by default which means user has access to all menu functions. To enable User Login, go to Service Setup > Resets > Tech User Login. A 4 digit login code will be needed to enable the Login. The unit comes from the factory with a default code of “1234” which can be changed once the Login is Enabled. Be sure to record this code in a secure place. If the code is forgotten, contact the factory for assistance.

If the User Login is enabled, then any user who doesn't have the login code will only be able to perform two functions:

1. Change Trend Graph mapping .
2. Turn on the Output Hold so cleaning can be performed without disrupting the output signals (4-20mA, Modbus, Data Log).

3.3.2 Sample Setup

From the top Setup menu move the arrow down to "Sample Setup" and press **Enter**. You should see the below screen.



3.3.2.1 Output Hold

The Output Hold allows the user to temporarily hold the measurement result being sent to the analog outputs and digital communications (i.e. MODBUS) for a user defined length of time (up to 60 minutes). This function prevents data excursions to the SCADA/DCS while the unit is being serviced. The display on the PC3400 will display "Holding" in the bottom left hand corner as long as the Output Hold is active. The PC3400 will still perform measurements and update the local display while Output Hold is active.

3.3.2.2 Sample Period

Sample Period is the number of seconds over which a measurement is made. Default value is 15 seconds. The range of the Sample Period is from 4 to 998 seconds.

3.3.2.3 Sample Frequency

Sample Frequency is the number of seconds between measurements. Default value is 60 seconds. The range of the Sample Frequency is from 5 to 999 seconds. The Sample Frequency must be greater than the Sample Period.

3.3.2.4 Size Ranges

The Size Ranges menu allows the user to establish the number of bins to be measured as well as the size ranges associated with those Bins. Up to 8 Bins can be established. The sizes used for each Bin must fall between 2 and 100 μm . When in Composite mode, the sizes need to be in sequence, smallest to largest and cannot overlap. The default size for each bin is shown below.

2	—	5	u m
5	—	1 0	u m
1 0	—	1 5	u m
1 5	—	2 5	u m
2 5	—	5 0	u m
5 0	—	1 0 0	u m
> 1 0 0			u m

When entering the size settings, it is not necessary to use all 8 size Bins. Entering a value of 0 will turn the Bin(s) off. The default setting for Bin 7 and Bin 8 is 0, which is why there are only 6 Size Ranges active (not counting the 'greater than' range) when the unit is received from the factory.

3.3.2.5 Flow Rate

If necessary, the Flow Rate value can be changed from the factory default setting of 75 ml/min to match the actual flow rate through the sensor (e.g. 60 ml/min) in order to achieve accurate count/ml or count/100ml readings.

NOTE:

Particle sizing may not be accurate if the unit has not been calibrated at that flow rate being used. It is recommended to leave the Flow Rate at 75 ml/min unless changes to this setting have been previously discussed with the factory

3.3.2.6 Composite or Differential

This allows the user to choose between using Composite or Differential Size Range settings. Composite size ranges (like what is shown on previous page) cannot overlap. In Composite mode, if 5 micron is the "To" value in Bin 1 then it must also be the "From" value in Bin 2. In Differential mode, the bins can overlap. Below is an example of how the Differential Bins could be setup.

```

2 — 1 0 0   u m       —   7 3 7   / m l
5 — 1 0 0   u m       —   8 2   / m l
1 0 — 1 0 0   u m     —   3   / m l
1 5 — 1 0 0   u m     —   1   / m l
2 5 — 1 0 0   u m     —   0   / m l
5 0 — 1 0 0   u m     —   0   / m l

                               T i m e   1 6 : 2 0

```

3.3.2.7 Count Format

Allows user to choose between Counts per ml (default setting), Counts per 100 ml, and Raw Counts.

3.3.3 General Setup

From the top Setup menu move the arrow down to "General Setup" and press **Enter**. You should see the below screen.

```

G E N E R A L   S E T U P

➡  T r e n d   S e t t i n g s
    D i s p l a y   C o n t r a s t
    T i m e   a n d   D a t e
    O u t p u t s   &   A l a r m s
    C o m m u n i c a t i o n s   S e t u p
    L o g   F r e q u e n c y

```

3.3.3.1 Trend Settings

The Trend Settings menu allows the user to map one of several variables to the Trend Graph. These include Total Counts, all Bin counts, Cell Condition, Laser Condition, and Analog Inputs. Upon selecting which variable to map to the graph, the menu prompts the user to select the max scaling for the graph. The range of the Trend Maximum scaling is from 1 to 65000. The default value is 200 counts.

3.3.3.2 Display Contrast

Allows the user to adjust the LCD contrast settings for best viewing performance.

3.3.3.3 Time and Date

Allows the user to set the time and date settings on the PC3400. Note: An internal battery keeps the internal clock running while the unit is turned off. The instrument will not automatically adjust for daylight savings time.

3.3.3.4 Outputs & Alarms

Under the Outputs & Alarms menu the user can Map and Scale the 4-20mA Outputs.

The Alarm Setup allows the user to Map up to two Alarms and set the Alarm Threshold. Note: The Alarm settings also control the optional alarm relays. Alarm 1 controls Relay 1 and Alarm 2 controls Relay 2.

The mapping options for the Outputs and Alarms includes Total Counts, all Bin counts, Cell Condition, Laser Condition, and Analog Inputs.

Setup for optional Analog Inputs is also accessed through this menu via the Input Type selection. It is necessary to identify each input channel as either 0 – 10 VDC, 0 – 5 VDC or 0 – 20 mA. The 0 – 20 mA option is also used for 4 – 20 mA signals. Jumpers on the analog input board must be configured to match the selected input type. See Figure 13.

3.3.3.5 Communications Setup

Under the Communications Setup menu the user can set the address of the PC3400, select Language options, choose the communication type (e.g. Standard Serial, RTU, TCP), set the Baud Rate, and enter the Network settings if the optional MODBUS TCP communications are being utilized.

Note: For Serial (RS232 & RS485) Communications, the default address is 1 and the range is from 1 to 255. Communication settings are by default 9600 baud, 1 stop bit, and no parity bit. The PC3400 can handle a baud rate up to 56K.

Note: For Ethernet Communications, the default settings are as follows:

IP Address: 192.168.1.1

Gateway Address: 192.168.1.1

Subnet Mask: 255.255.255.0

MAC Address: 1.1.1.1.1.1

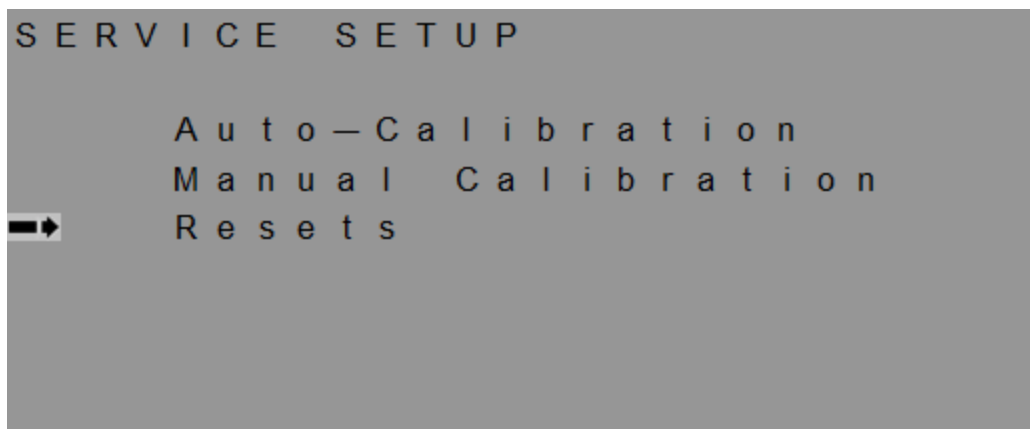
Note: The instrument will not communicate when a menu screen is active. Communications will resume when the menu is exited.

3.3.3.6 Log Frequency

This menu allows the user to selecting how often the data log and graph are updated with new data. Log Frequency is in minutes and the range is from 0 to 255 minutes. The default Log Frequency is 0 minutes. With the setting of 0 minutes, the data log and graph will be updated with each measurement taken.

3.3.4 Service Setup

From the top Setup menu move the arrow down to “Service Setup” and press **Enter**. You should see the below screen.



3.3.4.1 Auto-Calibration & Manual Calibration

The settings under this menu are used to adjust the calibration of the PC3400. These menus should not be accessed unless the person accessing the menu has thoroughly reviewed the calibration procedure provided by Chemtrac, Inc. The calibration procedure is a separate document from this manual and can be obtained by contacting Chemtrac at 770-449-6233 or via email at Chemtrac@chemtrac.com. Please provide your full contact info as well as your instrument's version and serial number.

3.3.4.1.1 4-20mA Output Calibration

If the PC3400 is equipped with the optional 4-20mA Output Board, the 4-20 mA Outputs can be set to 4 or 20 mA by accessing the **Output Adjust** menu under the Manual Calibration menu. Once the outputs are set to either 4 or 20 mA, the potentiometers shown below can be adjusted to calibrate the outputs.

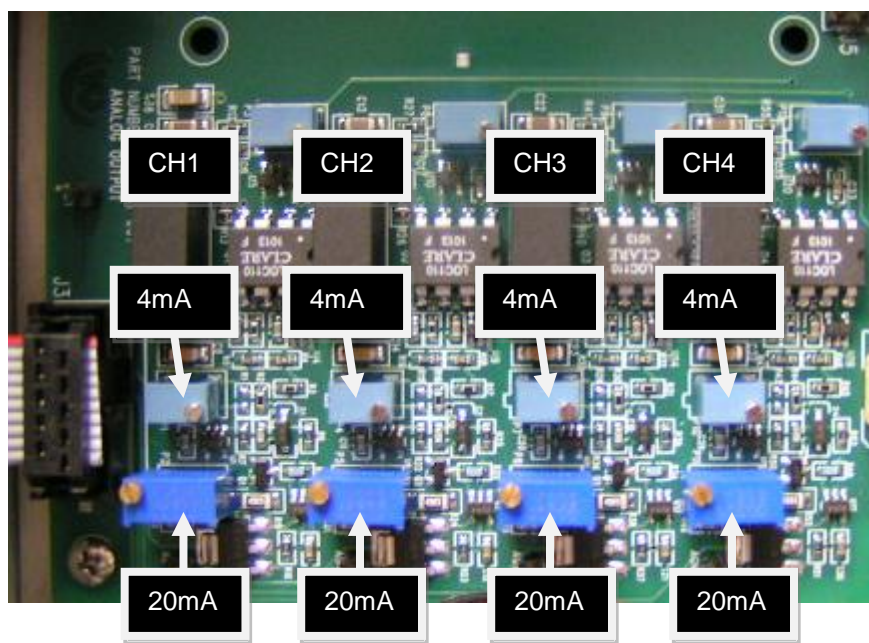


Figure 17 Optional Analog Output Board Adjustment

3.3.4.2 Resets

Under the Resets menu there are three selections.

Restore Factory Cal – This will take all the instrument settings, including the calibration settings, back to what they were when the unit shipped from the factory. This is provided to allow the user to return back to factory settings in the event the unit is no longer operating properly and it is suspected that changes to critical instrument settings may have been made that are affecting the unit's operation.

Tech User Login – Enabling the Tech User Login will limit normal users to only being able to do two things:

1. Enable the "Output Hold" so they can service the sensor without disrupting the data being sent to the SCADA/DCS.
2. Change the scaling for the Trend on the front panel display.

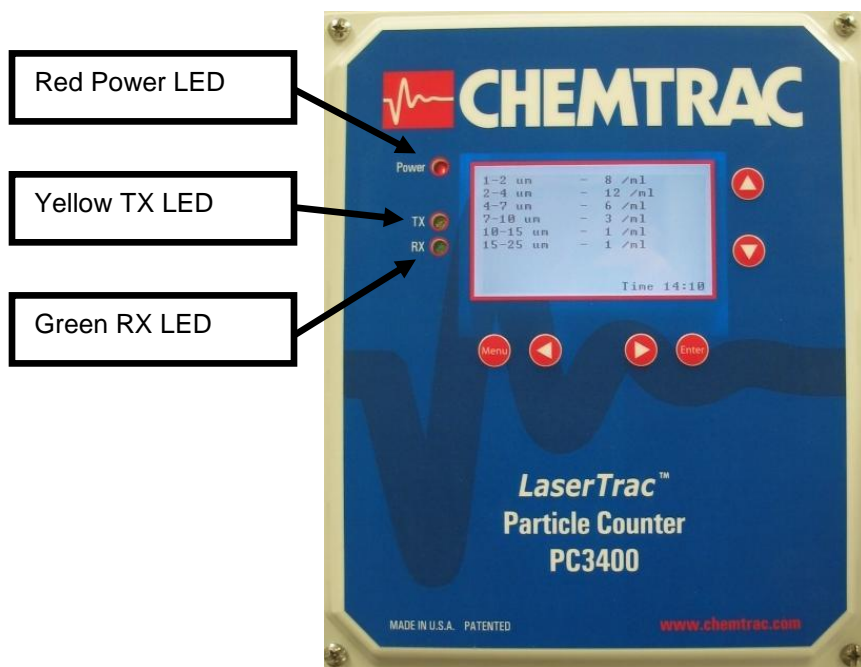
When enabling the Tech User Login, the user will be required to enter the old password. On a new unit the password is **1234**. Once the correct "old" password has been entered, the user is allowed to Enable the Tech User Login and create a new password. Be sure to record this password in a secure location. If the password is lost, contact Chemtrac for a password reset.

Erase Data Memory – This will clear the PC3400's datalog. Be sure to download data as outlined in section 6 of this manual before erasing data. Once data is erased, it cannot be retrieved.

Note: It does require Level 2 Tech User access to erase memory. It is recommended to enable Tech User Login in order to prevent unauthorized erasing of the data log

3.4 RS-485/RS-232 COMMUNICATION AND POWER INDICATORS

The PC3400 comes equipped with three status LED's. One red LED to indicate power and a yellow LED for TX and a green LED for RX to indicate the unit is properly communicating with the host computer. The red power LED in combination with the illuminated LCD lets the user know the unit has the appropriate power to function properly. **Note:** The yellow TX LED will blink once on power up.



Status LEDs

With TracWare running the LED's on each unit should flash at least once a minute. If the TX LED does not flash, there is a break in the communications line prior to this unit or a problem with the computer. If the TX LED flashes but the RX LED never flashes, the problem may be in the unit. Contact Chemtrac if the LED's do not appear to be functioning properly and communication cannot be established with the host computer.

3.5 CLEANING PROCEDURE

It is important that a consistent flow rate be maintained since the data produced by the particle counter is based on the sample volume (particles per milliliter). As the tubing and flow cell become dirty, flow will be restricted. Therefore it is necessary that a proper maintenance schedule be followed to ensure the flow rate is not adversely impacted from fouling.

If adequate sample pressure is available, the constant head flow control weir will maintain an accurate flow rate through the sensor. Flow problems will only be caused by fouling of the flow cell and fouling of the tubing and barb fittings. Obviously, the more turbid the sample, the more likely clogging / fouling will occur. If raw water is being sampled, it is recommended that a small 40 mesh strainer be placed in line before the sensor to catch debris.

Routine cleaning of the flow cell should be performed on a regular basis. How often the flow cell should be cleaned will vary depending on water quality. The cell condition is monitored by the particle counter electronics, and can be used as an indication of when cleaning is necessary. A drop in the cell condition to 85% (or 10 to 15% from previous reading obtained after cleaning) indicates that cleaning should be performed.

Any standard laboratory cleaner can be used to clean the flow cell. If iron or manganese buildup is a problem, vinegar, CLR, or another slightly acidic liquid, can be used. The cleaner can be flushed through the flow cell, or applied using the cleaning brush. The sapphire window material and the external flow cell design make brush cleaning a safe and effective method for removing tough contaminants.

NOTE

Prior to connecting the sensor, the sample line should be flushed thoroughly. Failure to do this is a common cause of clogged sensors.

Several methods may be used to clear a clogged flow cell. One of the most effective tools is a small can of compressed air (available at Radio Shack or most hardware stores). Remove the tubing from both sides of the flow cell and blow the air through the flow cell from the top of the flow cell (opposite direction from the flow). If compressed air is not available run the liquid sample in from the top of the flow cell and increase the flow rate. The flow cell windows are sapphire, which is scratch resistant, but it is not recommended that pieces of wire or other objects be used to clear clogs. Once the clog is removed, a light can be shined through the sensor to allow visual inspection. The flow cell opening is large enough to see through when clear.

NOTE

The particle counter can still count particles with a dirty flow cell, but the accuracy may be diminished.

3.5.1 Non-brush Cleaning

Fill a large syringe with cleaner (diluted to manufacturer's recommendation) and attach it to the top flow cell barb with a short piece of tubing (See Figure 18). Squeeze the syringe to introduce the cleaner into the sensor and let it sit for a few minutes and then inject some more and let that stand a few more minutes. Finally, force the remaining cleaner rapidly through the flow cell. The rapid flow should remove most buildup that has occurred in the sensor and bring the cell condition back up to an acceptable level. Non-brush cleaning is not a replacement for occasionally cleaning with a brush, but it useful when you don't have a brush on hand.

3.5.2 Brush Cleaning

Remove the tubing from the sensor's fittings. Insert brush from top of sensor until it rests snugly in the flow cell (See Figure 18). Move the brush in and out of the flow cell using short strokes. Brush again from the other side of the sensor.



Figure 18 Sensor Cleaning Methods

NOTE

The small size of the brush makes it easy to bend or damage. Do not force the brush into the flow cell. It should fit into the flow cell with light pressure.

Once cleaning has been performed, reattach flow lines and allow a minute or so for the flow cell to flush out. Verify that the cell condition indicator is back in the 90% range. If it is not, repeat the procedure.

NOTE

The cell condition indicator is not valid if the sensor is not full of water and clear of air bubbles.

3.5.3 Replacing Tubing

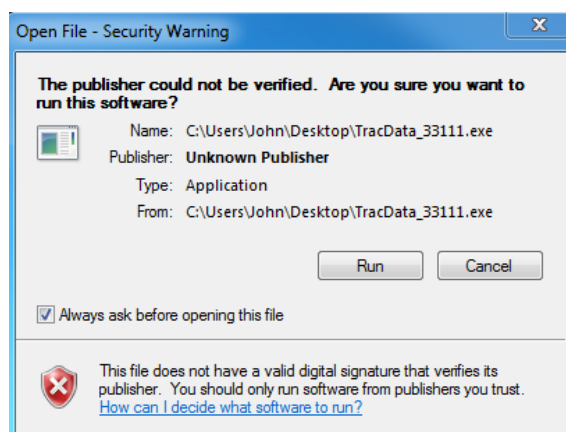
As the tubing becomes dirty, it will restrict flow through the sensor and can also contribute to higher counts (especially if the tubing is disturbed), so sensor tubing should be replaced as it becomes visibly fouled. It is not necessary to replace the Flow Control Weir drain tubing or the drain tubing on the bottom of the Drain Cup. Weir Inlet tubing should be replaced on occasion to help reduce the potential for vibration or any kind of movement on the tubing to release particles.

4.0 DOWNLOADING DATA

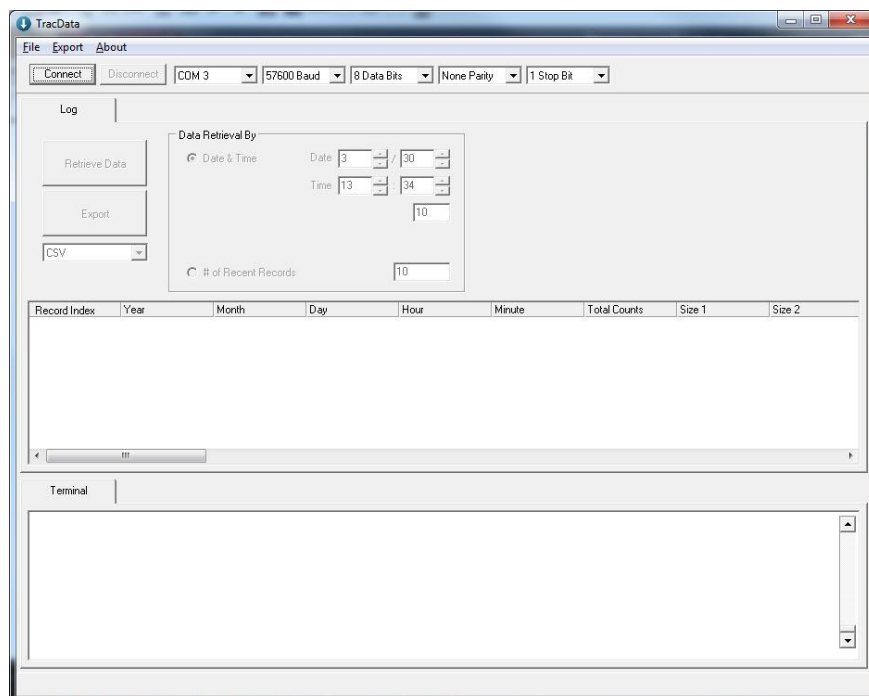
The PC3400 records all measurement data in internal flash memory. The internal memory holds over 65,000 sample strings of data. This data can be downloaded over an RS-232 or RS-485 connection using the TracData software.

4.1 INSTALLING AND SETTING UP TRACDATA SOFTWARE

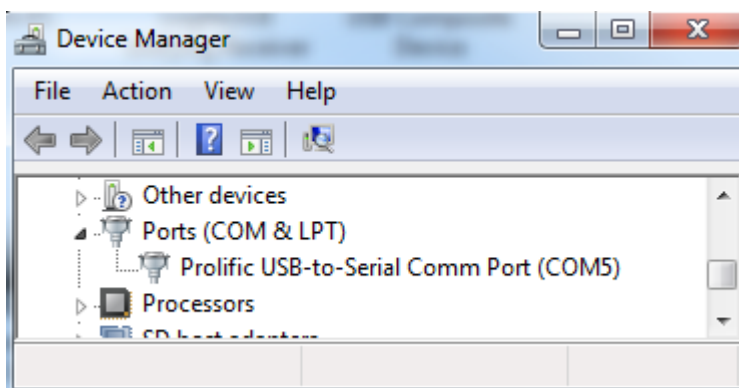
The TracData software can be downloaded from www.chemtrac.com/tracdata. Run the .exe installation file to install the software on the computer that will be used to download the data. If the message shown below is displayed, click on Run. Follow the instructions provided by the InstallShield Wizard and be sure to note where the TracData software data gets installed. Default location is C:\Program Files\Chemtrac\TracData



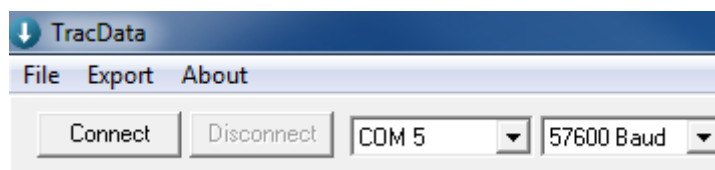
Go to the folder where the TracData software was installed and click on TracData.exe. The below screen will appear.



At the top of the TracData screen are the communication settings for Com port and Baud rate. The user must select the Com port that will be used to communicate with the PC3400. If a USB to Serial converter is being utilized, the Com port can be identified via the Device Manager (located under windows Control Panel). As shown in the below example, the USB to Serial converter is connected to COM 5.



Once the Com port has been identified, change the Com port setting to match in TracData. Also, verify the Baud rate is set for 57600.



At this point, it will be necessary to connect the RS-232 Download Cable between the Com port on the computer and the RS-232 terminals on the PC3400.

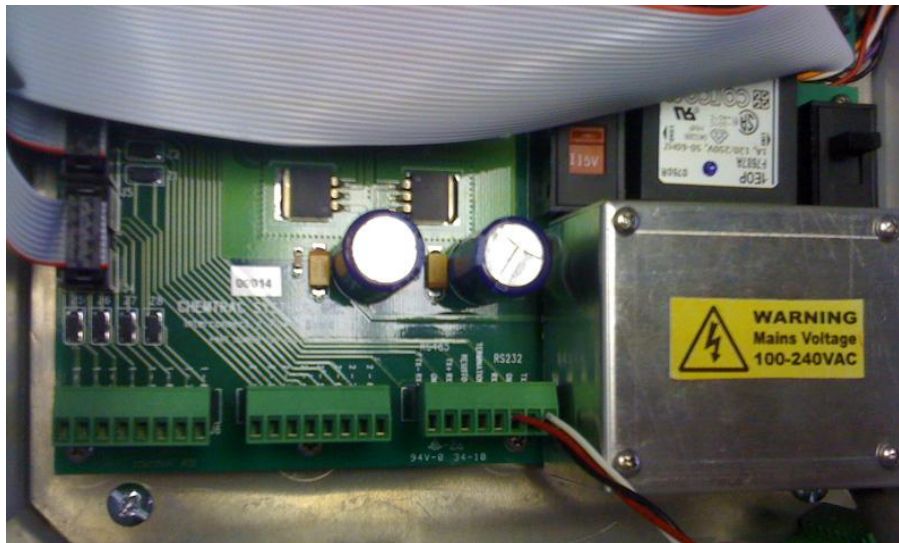
4.2 CONNECTING RS-232 DOWNLOAD CABLE

Contact Chemtrac at 770-449-6233 or chemtrac@chemtrac.com if the optional RS-232 Download cable was not supplied with your unit. Below is a picture of the download cable.



Connect the DB9 end of the download cable to a Com port on your PC. Alternatively, if your computer only has USB ports, you will need to connect the DB9 connector to a USB to Serial converter that gets plugged into a USB port.

Connect the other end of the download cable, which is the 8 position green terminal, to the PC3400's RS-232 Communications connector shown below.



Press the Menu button on the PC3400's front panel display. If the Login is enabled for Level 2 Tech User access, you will need to first enter the login code. Then go to the following menu:

General Setup > Communications Setup > Baud Rate

Set the Baud Rate to match whatever setting is being used on the TracData software. The default and recommended setting in TracData is 57600. The default setting for the PC3400 Baud rate is 9600 and so it will be necessary to change this setting to match TracData's setting (i.e. 57600) in order to establish communication. For the new Baud rate settings to take effect, it's necessary to perform an **Exit & Save** from the top menu after changing the Baud Rate.

Note: Data download at 57600 Baud Rate is around 40 records per second. If there are communication problems, try using a slower Baud Rate setting. Remember that the settings in TracData and the PC3400 must match.

4.3 DOWNLOADING DATA

If all the instructions in the previous section have been followed, the user is now ready to download the data. Start by clicking on the button labeled "Connect" in the top left hand corner of TracData.

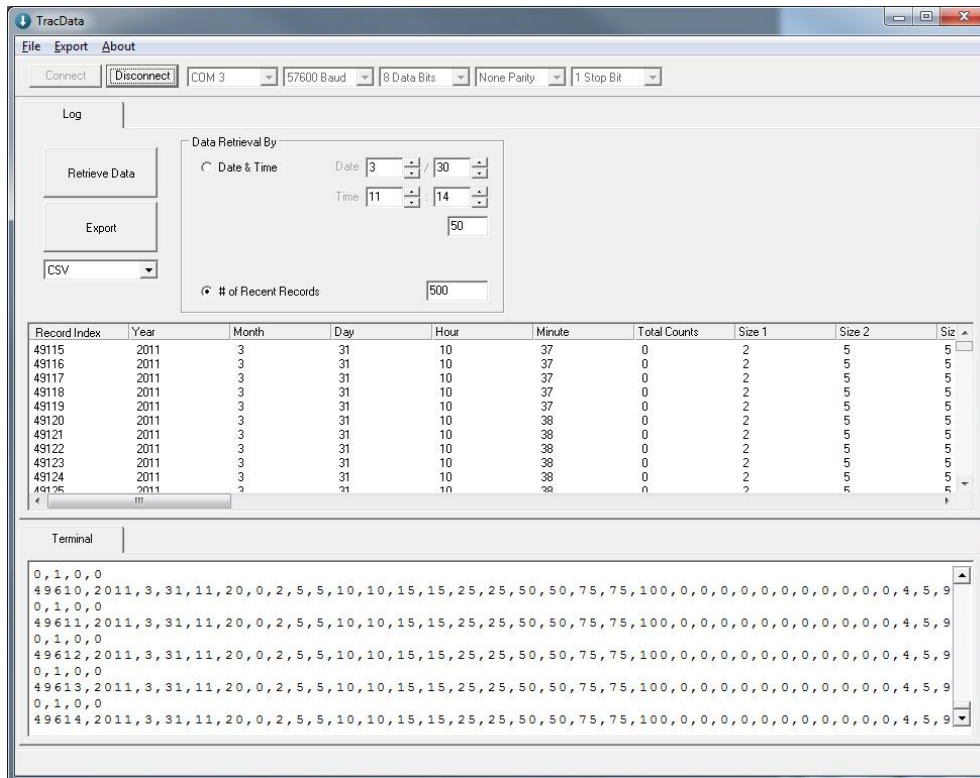
Next, make a selection in the box labeled "Data Retrieval By". It is recommended to select the "Recent Records" option which downloads the number of records entered starting with the most recent data. Alternatively, if you know a date and time that matches a record stored in the PC3400's memory, you can select "Date & Time" and tell the software how many records you want to download starting at that point.

Note: When using "Date & Time" option, it is mandatory that the date and time entered matches exactly with a record stored in memory. If there is no match, data will not download and the PC3400 will freeze in "Terminal Setup" mode and require the power to be cycled off and back on.

Click on the “Retrieve Data” button to begin data download. The recorded measurement data will be read in and displayed in the TracData software.

Note: The information displayed in the Terminal field is communications back and forth between the computer and PC3400.

Below is how the data will appear in TracData after it has been successfully downloaded.



Formatted Data that's been downloaded from PC3400 and ready for export.

Raw, unformatted measurement data that's been downloaded from PC3400.

Note: If TracData is unable to download data when using the “Date & Time” retrieval option, and the PC3400 appears to be locked up in Terminal Setup mode, the most likely cause is that an invalid date or time has been entered. To fix this, simply cycle power to the PC3400 and then download data using the “# of Recent Records” option versus the “Date & Time” option.

4.1 EXPORTING DATA

The data is now ready for export. It is recommended to export the data as HTML as this will also export the column headings. Exporting as XLS or CSV will only export the data and not the column headings. Once the data has been downloaded and exported as an HTML, XLS, or CSV file; it can be opened and viewed using a spreadsheet program like Microsoft Excel software.

Once it has been verified the data has downloaded and been exported to the desired file type, the PC3400's memory can be erased by going to Menu>Service Setup>Resets>Erase Data Memory.

Note: It does require Level 2 Tech User access to erase memory. It is recommended to enable Tech User Login in order to prevent unauthorized erasing of the data log (see section 5.3.4.2 of this manual for more info).

5.0 RECOMMENDED SPARE PARTS LIST

<u>Part #</u>	<u>Description</u>
11420	Sensor Sample Tubing*
11425	Weir Inlet & Drain Cup Tubing*
34400	Sensor Cleaning Brush

*Tubing can also be ordered from Cole Parmer using the below product numbers:

PN: EW-6409-16 (Sensor Sample Tubing)

PN: EW-06409-15 (Weir Inlet and Drain Cup Tubing)

5.1 ORDERING SPARE PARTS

To place an order for spare parts you may either call, e-mail, or fax Chemtrac Inc. directly or contact your local distributor or representative. The following information should be included in the your request; model number and serial number of Particle Counter, part number(s), qty, and description of parts needed. Pricing and availability are available upon request.

Normal lead-time in stock parts is 1 to 2 days.

Chemtrac Inc.
6991 Peachtree Industrial Blvd. Building 600
Norcross GA 30092

Ph: Inside US 1-800-442-8722, 770-449-6233

Fax: 770-447-0889

Email: chemtrac@chemtrac.com

www.chemtrac.com

Appendix A

User Menu Map

