



KYORITSU

**PACKTEST**  
ION SELECTIVE

INSTRUCTIONS

## Sodium hypochlorite

Model WAK - NaClO<sub>2</sub>

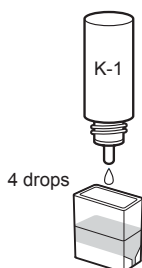
Harmful

Corrosive

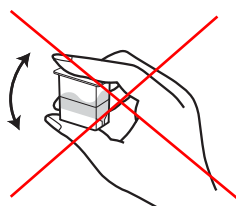
Potassium Iodide Visual Colorimetric Method  
Main reagent: Sulfuric acid, Potassium IodideRange: NaClO<sub>2</sub> 5~1000 more than mg/L(ppm)

### How to use

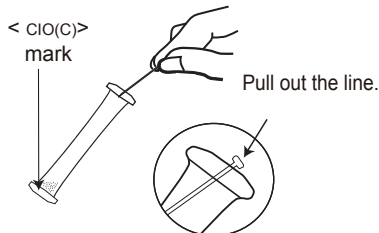
1. There is a possibility of creation of gas. Please use it in an open place.
2. Directions from (1)1 -through (4) should be a quick job.



- (1) Fill the Cell (PACKTEST Square Cup) up to the first line (1.5 ml) with sample. Add 4 drops (~0.25mL) of K-1 reagent.



- (2) Do not shake.

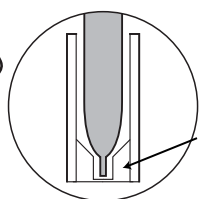


- (3) Remove the line to clear the aperture from the top of the tube.



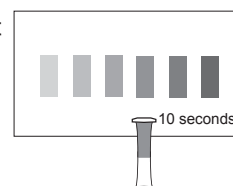
- (4) Press the sides of the tube to expel approximately half of volume. Maintain pressed.

- (5) Immerse the tube in the sample. Release the sides to fill the tube up to the half. Shake the tube lightly a few times.



insert the  
PACKTEST in  
the groove, as  
shown.

- (6) After 10 seconds, put the tube on the color chart as shown and compare with the standard colors.



### How to read the test

After the reaction time, compare the color of the tube with the standard colors. The nearest color indicates the measured value of the sample. A color between two standard colors indicates a value between the two standard values. According to your need, the Phosphate-phosphorus concentration can be determined on the back of the color chart.

### Care in handling of PACKTEST before and after use

Keep PACKTEST in a cool, dry and dark place.

PACKTEST should be thrown with burnable garbage. Conform to the legislation of waste management.

Use a package as soon as possible after opening.

### First Aid Measures

K-1 reagent contains diluted sulfuric acid (pH<2). It is harmful and corrosive.

Eye contact → Immediately rinse eyes with water for at least 15 minutes. Consult a physician.

Skin contact → Immediately flush skin with water.

Ingestion → Immediately rinse mouth. Consult a physician.

In case of doubt, consult a physician.

**KYORITSU CHEMICAL-CHECK Lab., Corp.**37-11, DEN-ENCHOFU 5 CHOME, OHTA-KU, TOKYO 145-0071 JAPAN  
FAX: 81-3-3721-0666 <http://kyoritsu-lab.co.jp>