



KYORITSU

PACK TEST
ION SELECTIVE

INSTRUCTIONS

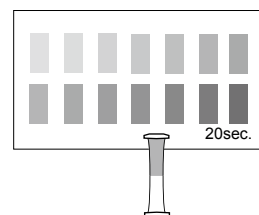
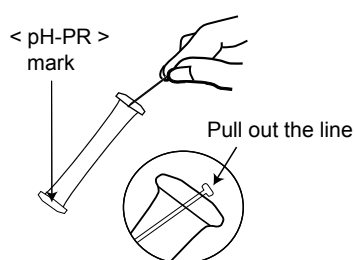
pH-PR

Various Types

Model WAK-PR

Visual Colorimetric Method with Phenol Red
Main reagent: Phenol red
Covered range: pH 6.2 - 8.8

How to use



- (1) Remove the line to clear the aperture from the top of the tube.
- (2) Press the sides of the tube to expel approximately half of volume. Maintain pressed.
- (3) Immerse the top of the tube in the sample. Release the sides to fill the tube up to the half. Shake the tube a few times.
- (4) After 20 seconds, shake lightly. Put the tube on the color chart as shown and compare with the standard colors.

How to read the test

After the reaction time, compare the color of the tube with the standard colors. The nearest color indicates the measured value of the sample. A color between two standard colors indicates a value between the two standard values.

Care in handling of PACKTEST before and after use

Keep PACKTEST out of the reach of children.

Keep PACKTEST in a cool, dry and dark place.

PACKTEST should be thrown with burnable garbage. Conform to the legislation of waste management.

Use a package as soon as possible after opening.

The PACKTEST tube must not be opened before and after use.

First Aid Measures

Eye contact → Immediately rinse eyes with water for at least 15 minutes. Consult a physician.

Skin contact → Immediately flush skin with water.

Ingestion → Immediately rinse mouth. Consult a physician.

In case of doubt, consult a physician.

**KYORITSU CHEMICAL-CHECK Lab., Corp.**

37-11, DEN-ENCHOFU 5 CHOME, OHTA-KU, TOKYO 145-0071 JAPAN
FAX: 81-3-3721-0666 <http://kyoritsu-lab.co.jp>