



DETAIL A  
SCALE 1 : 1

# Professional *Plus*

*the new generation  
in field and lab water  
quality instruments*

*detachable field probes  
and rugged cables mean  
less downtime*

*connect from field to  
lab probes in seconds*

*report parameters and  
units to fit your needs*

*log data and manage  
data with desktop  
software*

*usb connection for  
software upgrades*





# Professional Plus

The rugged design and field-worthiness of the Professional Plus instrument allows you to perform your job with confidence even in the harshest field conditions and with the



- DO, pH, Conductivity, ORP, Ammonium, Nitrate, Chloride, Salinity, Total Dissolved Solids, Barometric Pressure
- 2,000 data-set memory with GLP event logging
- Interval or single-event logging capability
- Rubber, over-molded IP-67 water proof case
- 3-year instrument warranty; 2-year cable warranty
- User-upgradeable software via USB
- Backlit display AND keypad
- Graphic display with detailed Help
- Rugged cables, connectors, and probes



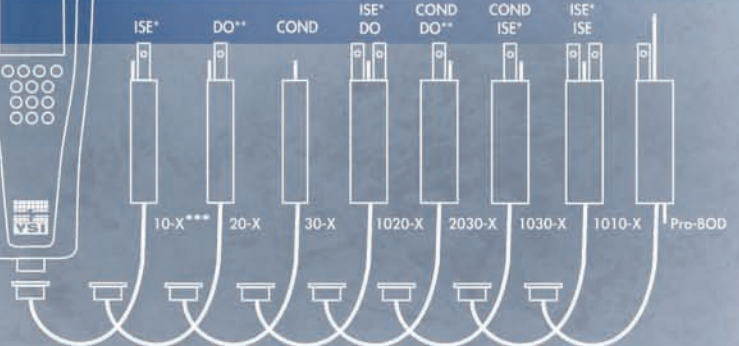
EPA Approved DO Methodology

The **YSI Professional Plus** accommodates any combination of Pro Series probe, cable, and accessory. This compact handheld includes multiple languages, detailed GLP data, on-screen Help functionality, auto-buffer recognition, mil-spec connectors, re-cal prompts, auto-stable and security passwords to help make your job easier.

*Finally, a professional instrument for a true professional.*



### Possible probe choices



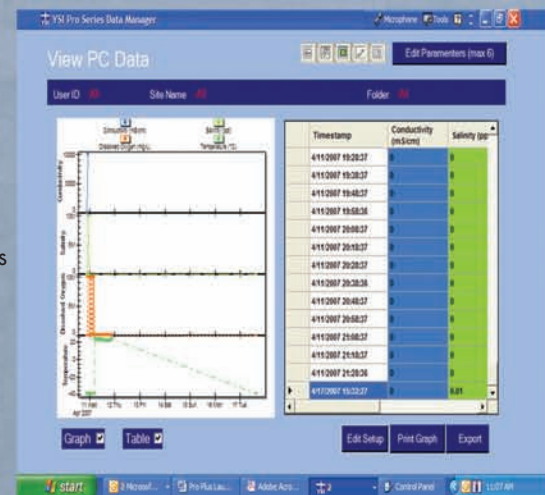
- \* Choice of ISE; pH, ORP, pH/ORP (not recommended on the 1010-X cable)  
Choice of ISE; Ammonium, Nitrate, or Chloride for fresh water only
- \*\* Choice of DO; Galvanic, Polarographic
- \*\*\* Lab-grade pH and ORP cable/probe options available
- X= Choice of cable length: 1, 4, 10, 20, 30-meter all (up to 100-meters on 20-X only)

connect from field to lab probes in seconds



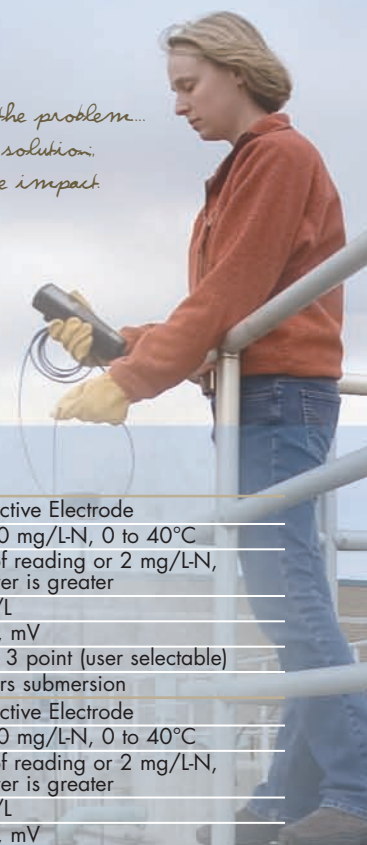
### Data Manager Software

- Easy-to-use software to manage all your data, set up instruments, or conduct real-time studies
- View graphical and tabular data
- USB connection also powers the instrument



lowest overall cost of ownership. Interchangeable probes and cables reduce down-time and keeps the Pro Plus ready whenever and wherever you are - field or lab.

*if complexity is the problem...  
ease of use is the solution.  
productivity is the impact.*



## SPECIFICATIONS

### (SYSTEM W/4-METER CABLE AND PROBES)

<b>Dissolved Oxygen (%)</b>	Sensor Type	Polarographic or Galvanic	<b>Ammonium***</b>	Sensor Type	Ion Selective Electrode		
	Range	0 to 500%		Range	0 to 200 mg/L-N, 0 to 40°C		
	Accuracy	0 to 200% ± 2% of reading or 2% air saturation, whichever is greater 200% – 500% ± 6% of reading		Accuracy	±10% of reading or 2 mg/L-N, whichever is greater		
	Resolution	1% or 0.1% air saturation (user selectable)		Resolution	0.1 mg/L		
	Calibration	1 point and zero		Units	mg/L-N, mV		
<b>Dissolved Oxygen (mg/L)</b>	Sensor Type	Polarographic or Galvanic	<b>Nitrate***</b>	Sensor Type	Ion Selective Electrode		
	Range	0 to 50 mg/L		Range	0 to 200 mg/L-N, 0 to 40°C		
	Accuracy	0 to 20 mg/L (±2% of the reading or 0.2 mg/L, whichever is greater) 20 to 50 mg/L (±6% of the reading)		Accuracy	±10% of reading or 2 mg/L-N, whichever is greater		
	Resolution	0.1 or 0.01 mg/L (user selectable); 0.1% air saturation		Resolution	0.1 mg/L		
	Calibration	1 point and zero		Units	mg/L-N, mV		
<b>Temperature (Field rugged cables)</b>	Range	-5 to 70°C	<b>Chloride***</b>	Sensor Type	Ion Selective Electrode		
	Accuracy	±0.2°C		Range	0 to 1000 mg/L, 0 to 40°C		
	Resolution	0.1°C		Accuracy	± 15% of reading or 5 mg/L, whichever is greater		
	Units	°C, °F, K		Resolution	0.1 mg/L		
<b>Temperature (Lab-grade)*</b>	Range	-5 to 70°C	<b>Total Dissolved Solids (TDS)</b>	Sensor Type	Calculated from conductivity and temperature		
	Accuracy	±0.35°C		Range	0 to 100 g/L Cal constant range 0.30 to 1.00 (0.64 default)		
	Resolution	0.1°C		Resolution	0.001, 0.01, 0.1g/L		
	Units	°C, °F, K		Units	kg/L, g/L		
<b>Conductivity**</b>	Sensor Type	Four electrode cell	<b>Barometer</b>	Sensor Type	Piezoresistive		
	Range	0 to 200 mS/cm		Range	375 to 825 mmHg		
	Accuracy	±0.5% of reading or 0.001 mS/cm, whichever is greater (4-m cable) ±1% of reading or 0.001 mS/cm, whichever is greater (20-m cable)		Accuracy	±3 mmHg within ±10°C from calibration point		
	Resolution	0.001 mS/cm to 0.1 mS/cm (range dependent)		Resolution	0.1 mmHg		
	Units	µS, mS		Units	mmHg, inHg, mbar, psi, kPa, ATM		
<b>Salinity</b>	Calibration	1 point	<b>(INSTRUMENT ONLY AT AMBIENT TEMPERATURE)</b>	<b>pH</b>	Range	-2.60 to 16.60	
	Sensor Type	Calculated from conductivity and temperature			Accuracy	±0.1 mV (0.01 pH units)	
	Range	0 to 70 ppt			Resolution	0.1 mV (0.01 pH units)	
	Accuracy	±1.0% of reading or 0.1 ppt, whichever is greater			<b>ORP</b>	Range	-1999 to +1999 mV
	Resolution	0.01 ppt				Accuracy	±0.5 mV
Units	ppt, PSU	Resolution	0.01 mV				
<b>pH</b>	Calibration	1 point	<b>Conductivity</b>	Range	0.0 to 200 mS/cm		
	Sensor Type	Glass Combination Electrode		Accuracy	±0.3% FS ±1 digit for each range		
	Range	0 to 14 units		Resolution	0.0001 mS/cm or 0.1 µS/cm to 0.1 mS/cm (range dependent)		
	Accuracy	±0.1 units		<b>Dissolved Oxygen</b>	Range	0.00 to 90 mg/L; 0 to 550%	
	Resolution	0.01 units			Accuracy	±0.2% FS (550% air saturation) ±1 digit (with 1.25 PE membrane at 10°C)	
Units	mV, pH units	Resolution	0.01 mg/L; 0.1% air saturation				
Calibration	1, 2, 3, 4, 5, or 6 point (user selectable); US, NIST or Custom Buffers	<b>Temperature</b>	Range		-10 to 100.00C		
<b>ORP</b>	Sensor Type		Platinum button		Accuracy	±0.1% FS ±1 digit	
	Range		-1999 to +1999 mV	Resolution	0.1C		
	Accuracy		+/-20 mV in redox standards	Units	C, F, K		
	Resolution	0.1 mV					
	Units	mV					
Calibration	1 point						

\* Lab-grade cables include 605107, -108, -109, 605177, -178, -179

\*\* Derived parameters can include resistivity, salinity, specific conductance, and total dissolved solids

\*\*\* ISE sensors for freshwater only



To order or for more information, contact YSI Environmental.

**800 897 4151**  
www.YSI.com

YSI Environmental  
1700/1725 Brannum Lane  
Yellow Springs, Ohio 45387  
+1 937 767 7241  
+1 937 767 9353 fax  
proseries@YSI.com

SonTek/YSI  
+1 858 546 8327  
+1 858 546 8150 fax  
inquiry@SonTek.com

YSI Integrated Systems & Services  
+1 508 748 0366  
+1 508 748 2543 fax  
systems@YSI.com

YSI Gulf Coast  
+1 225 753 2650  
+1 225 753 8669 fax  
environmental@YSI.com

YSI Hydrodata  
European Support Centre  
+44 1462 673581  
+44 1462 673582 fax  
europe@ysi.com

YSI Hydrodata (Ireland)  
+353 87 2430264  
+353 46 9487637 fax  
ireland@YSI.com

YSI (Hong Kong) Limited  
+852 2891 8154  
+852 2834 0034 fax  
hongkong@ysi.com

YSI Middle East (Bahrain)  
+973 17536222  
+973 17536333 fax  
halsalem@ysi.com

Nanotech/YSI (Japan)  
+81 44 222 0009  
+81 44 221 1102 fax  
nanotech@YSI.com

YSI China  
+86 10 5203 9675  
+86 10 5203 9679 fax  
beijing@ysi-china.com

ISO 9001  
ISO 14001

(Yellow Springs facility)

Pure Data for a Healthy Planet and Who's Minding the Planet are registered trademarks of YSI Incorporated.

YSI incorporated  
Who's Minding  
the Planet?<sup>™</sup>

©2007 YSI Incorporated  
Printed on recycled paper in USA  
W14-01 1007

# Professional *Plus*

## STEP 1

### ORDER INSTRUMENT

(INSTRUMENT INCLUDES DATA MANAGER SOFTWARE, THE COMMUNICATIONS SADDLE, AND USB CABLE)

605000 Professional Plus

## STEP 2

### ORDER CABLE(S)\*

(ALL CABLES INCLUDE TEMPERATURE; CABLES OVER 1-METER INCLUDE CABLE MANAGEMENT KIT)

60510-1, 4, 10, 20 or 30-meter ISE\*\*/temp

60520-1, 4, 10, 20 or 30-meter\*\*\* DO/temp

60530-1, 4, 10, 20 or 30-meter conductivity/temp

6051010-1, 4, 10, 20 or 30-meter ISE/ISE/temp

6051020-1, 4, 10, 20 or 30-meter ISE/DO/temp

6051030-1, 4, 10, 20 or 30-meter ISE/conductivity/temp

6052030-1, 4, 10, 20 or 30-meter DO/conductivity/temp

605107 1-meter single-junction probe and cable for pH/temp

605177 4-meter single-junction probe and cable for pH/temp

605108 1-meter single-junction probe and cable for ORP/temp

605178 4-meter single-junction probe and cable for ORP/temp

605109 1-meter single-junction probe and cable for pH/ORP/temp

605179 4-meter single-junction probe and cable for pH/ORP/temp

## STEP 3

### ORDER PROBE(S)

605202 Galvanic DO

605203 Polarographic DO

605780 Self-stirring BOD

605101 pH (ISE)

605102 ORP (ISE)

605103\*\*\*\* pH/ORP combination (ISE)

605104 Ammonium (ISE)

605105 Chloride (ISE)

605106 Nitrate (ISE)

## STEP 4

### ORDER SOLUTIONS

3161 1,000 us/cm conductivity solution (quart)

3163 10,000 us/cm conductivity solution (quart)

3169 50,000 us/cm conductivity solution (8 pints)

3682 Zobell, ORP solution (125 mL)

3824 pH 4, 7, 10 buffers (2 pints each)

3841 1 mg/L ammonium solution (500 mL)

3842 10 mg/L ammonium solution (500 mL)

3843 100 mg/L ammonium solution (500 mL)

3885 1 mg/L nitrate solution (500 mL)

3886 10 mg/L nitrate solution (500 mL)

3887 100 mg/L nitrate solution (500 mL)

## STEP 5

### ORDER ACCESSORIES

603059 Flow Cell, Standard, 203 mL

603077 Flow Cell Kit, 1 or 2 Port Probe (includes 603059 & 603078)

603078 Flow Cell Adapter, Single Port

603056 Flow Cell Mounting Spike

603075 Carrying Case, Soft-Sided

603074 Carrying Case, Hard-Sided

603069 Belt Clip

063517 Ultra Clamp

063507 Tripod Clamp

603062 Cable Management Kit

605978 Weight, Probe/Cable, 4.9 oz.

063019 Weight, Probe/Cable, 24 oz., 3"

063020 Weight, Probe/Cable, 51 oz., 6"

\* Cables with conductivity include probe (no need to order conductivity probe)  
\*\* ISEs include pH, ORP, Ammonium, Nitrate, Chloride  
\*\*\* Special order cables up to 100-meters are available with 60520 cables  
\*\*\*\* Not recommended for 6051010 cables. Only pH would be reported.



603059 Flow Cell

603069 Belt Clip

603075 Soft-sided Carrying Case

605978 Cable Weights

This piece is printed in the USA on paper made by New Leaf Paper to meet FSC standards. FSC promotes environmentally appropriate, socially beneficial, and economically viable management of the world's forests. This paper contains a mix of pulp that is made from FSC-certified, well-managed forests and 50% post-consumer waste.

This report is printed by Wendling Printing Company, which has earned the Forest Stewardship Council Chain-of-Custody certification from the Rainforest Alliance's SmartWood program. In addition, Wendling uses environmentally friendly nontoxic soy-based inks.



**NEW LEAF PAPER<sup>®</sup>**  
ENVIRONMENTAL BENEFITS STATEMENT  
of using post-consumer waste fiber vs. virgin fiber

YSI, Inc. saved the following resources by using New Leaf EcoMate (PSC), manufactured with Green-® certified renewable energy, 100% post-consumer waste, and processed chlorine free.

trees	water	energy	solid waste	greenhouse gases
2 fully grown	1,179 gallons	2 million Btu	122 pounds	259 pounds

Calculations based on research by Environmental Defense and other members of the Paper Task Force.  
©2007 New Leaf Paper www.newleafpaper.com