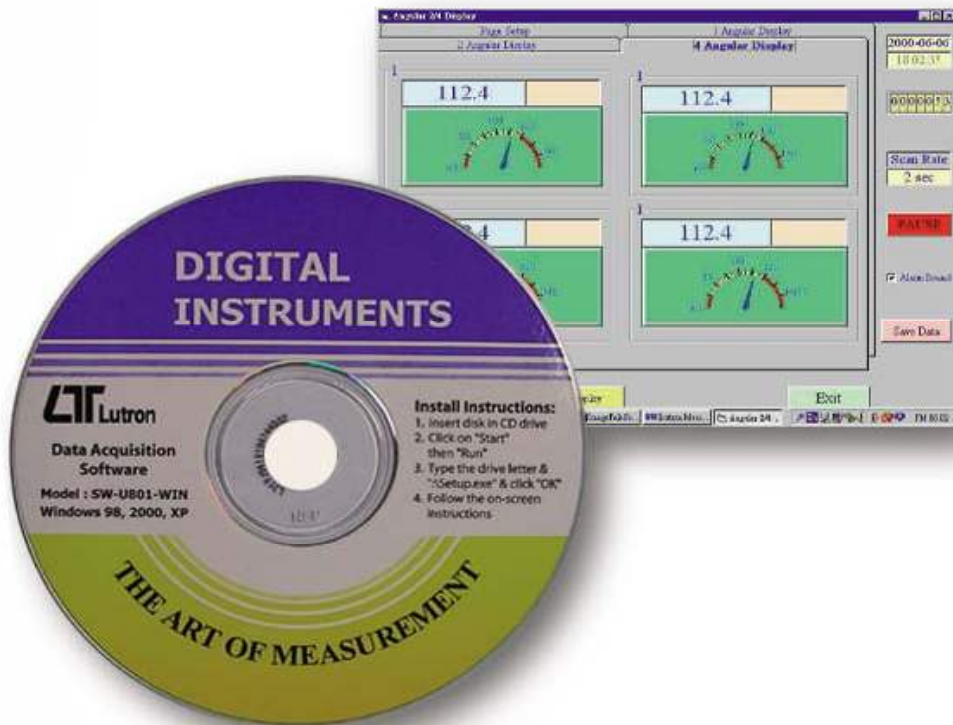


*Multi-Displays*

# DATA ACQUISITION SOFTWARE

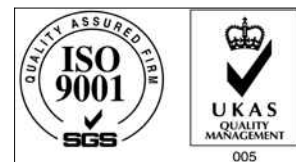
**Model : SW-U801-WIN**

*ISO-9001, CE, IEC1010*



## FEATURES

The SW-U801-WIN is a multi-displays ( 1/2/4/6/8 displays ) powerful WINDOWS program available for WIN 95 & WIN 98, which enables you to cooperate the LUTRON's instruments. It also provides the functions of data logging system, text display, angular display, chart display, data recorder high/low limit, data query, text report, chart report.. .xxx.mdb, xxx.txt data file can be retrieved for EXCELL, ACCESS., wide intelligent applications.



**Lutron**

**LUTRON ELECTRONIC**

*The Art of Measurement*

# MULTI-DISPLAYS DATA ACQUISITION SOFTWARE

## Model : SW-U801-WIN

### INTRODUCTION

The SW-U801-WIN is a multi-displays ( 1/2/4/6/8 displays ) powerful WINDOWS program available for WIN 95 & WIN 98, which enables you to cooperate the LUTRON's instruments. It also provides the functions of data logging system, text display, angular display, chart display, data recorder high/low limit, data query, text report, chart report.. .xxx.mdb data file can be retrieved for EXCELL, ACCESS., wide intelligent applications.

1. The saved xxx.mdb data file can be retrieved for EXCELL, ACCESS...
2. When execute the " Print data " function, will generate the xxx.txt file.

### GENERAL SPECIFICATIONS

System Requirement	<i>Computer with following operating system :</i> Win 98 Win 2000 XP <i>Monitor : VGA, EGA monitor</i>						
Function	Data recorder, text display, analog display, chart display, high/low limit, data query, text report, chart report.						
Common Port	Select COM 1 to COM 8.						
Display select	1 display, 2 displays, 4 displays, 6 displays, 8 displays.						
Data Record	Auto or Manual						
Sample Rate	2 to 3,600 seconds.						
Data Save Structure	Data file : XXX.mdb. <i>* Automatic save to disk.</i> Data file : XXX.txt. <i>* When execute the " Print data " function, will generate the xxx.text file.</i>						
Accessories Included	CD disk..... 1 PC. Operation manual..... 1 PC.						
Optional Cables	RS232 cable, Model : UPCB-01 Direct RS232 cable be used to connect the meter to the computer ( COM port ). RS232 cable, Model : UPCB-02 Isolated RS232 cable be used to connect the meter to the computer ( COM port ). USB cable, Model : USB-01 USB interface cable be used to connect the meter to the computer ( USB port ). RS232 cable, Model : UPCB-04 <i>* UPCB-04 is the double D9 RS232 cable.</i> <i>* Available for FG-5000A-232, FG-20KG-232.</i>						
* The instruments are available for SW-U801-WIN. * The exact cable's item that will cooperate with the instrument and the computer.	<b>UPCB-01 or USB-01 available models</b>		<b>UPCB-02 or USB-01 available models</b>			<b>UPCB-04 available models</b>	
	AM-4203	PM-9100	AM-4210	LX-1102	TM-926	YK-2005WA	FG-500A-232
	AM-4204	PM-9107	CD-4306	LX-1108	TM-929	YK-2014CD	FG-20KG-232
	AM-4205	PS-9302	CD-4322	LX-1118	TM-936	YK-22CT	
	AM-4206	TM-906A	CD-4322	MY-81AP	TM-939	YK-22DO	
	AM-4206M	TM-907A	DM-9031	MY-91HT	TM-946	YK-80AM	
	AM-4213	TM-908	DM-9093	PDT-2250	TM-949	YK-80AP	
	AM-4216	TM-910	DM-9680	PH-208	TQ-8801	YK-80AS	
	CD-4303	TM-915	DO-5519	PH-221	VB-8203	YK-80HT	
	DO-5510	TM-917	DT-2230	PHT-3109	VT-8204	YK-90HT	
	DO-5511	TQ-8800	DT-2269	PPH-2108	YK-2001PH		
	FG-5005	UVA-365	DW-6090	PPH-221	YK-2001TM		
	FG-5020	UVC-254	DW-6091	RGB-1002	YK-2004AH		
	FG-5100	VB-8200	EM-9000	SL-4012	YK-2004CD		
	HT-3006	VB-8201	HD-3008	SL-4013	YK-2005AH		
	HT-3015	VB-8202	HT-3009	SL-4112	YK-2005AM		
	LX-105	VB-8220	HT-306	TM-2000	YK-2005CD		
	LX-107	VC-9200	HT-315	TM-903A	YK-2005LX		
	MS-7000	VB-8220	LCR-9073	TM-9126	YK-2005RH		
	PH-207		LX-110	TM-925	YK-2005TM		

\* Appearance and specifications listed in this brochure are subject to change without notice.