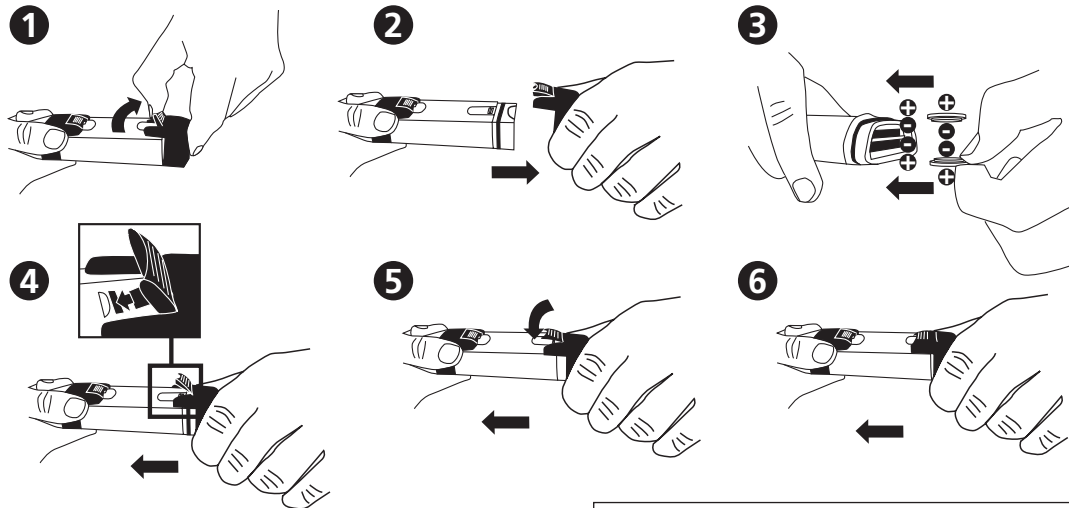




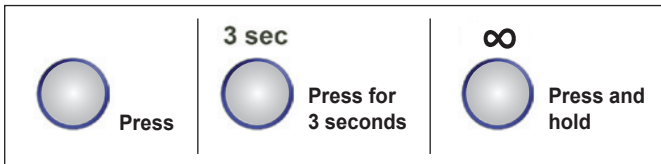
SD 80
TDS

Insert the batteries

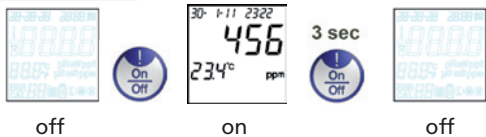


MEASUREMENT

Remove protective cap from the probe

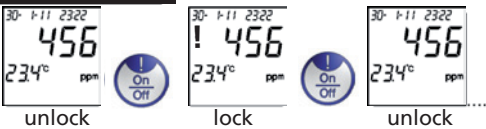


A. Power ON/OFF



Automatically turns off after 8 minutes of inactivity.

B. Lock/Unlock Data



Possible slight delay after pressing before freeze of the data (!).

C. Backlight ON/OFF



D. Store Data



After 3 sec. the file no. temporarily appears on the display, e.g. 01. Once the storage has reached max. capacity, the data will overwrite the oldest files.

TDS CALIBRATION

Characters in **RED** represent „Flashing symbols“.

- Re-Calibrate according to individual recommendations! Rinse the electrode with distilled water after each measurement.
- If temperature is out of range, „ERR“ will appear. Meter automatically returns to Measurement Mode.
- If the default reading is more than 30% out of standard buffer range, „ERR“ will appear.

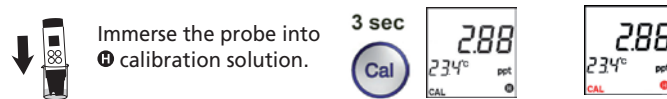
E. Calibrate TDS

Remove protective cap from the probe.
Power ON (see A)

Auto-recognition for **1** : 100~999 ppm and **2** : 1.00~10.00 ppt



Adjustment: to increase (+): **Cal** + **+** to decrease (-): **-**



Adjustment: to increase (+): **Cal** + **+** to decrease (-): **-**



SETUP

F. System Setup

Characters in **RED** represent „**Flashing symbols**“.

Unfreeze data first (see frontside B) before Menu selection.

3 sec

Recall Data
go to I.

1x

Select Buffer System
go to II.

2x

Set Date and Time
go to III.

3x

Set Temperature
go to IV.

4x

Set Data/Time display
type go to V.

To enter.

I. Recall Data

3 sec

Press for
further files.

Exit

Delete stored data.

3 sec

3 sec

Automatic Exit

II. Select TDS Factor (0.7/0.5)

3 sec

1x

(0.7)

(0.5)

Exit

III. Set Date and Time

Select V. 'Set Data/ Time display type' first.

3 sec

2x

24 hour clock

Exit

am/pm 12 hour clock

Exit

Adjustment:

to increase (+);

to decrease (-)

IV. Set Temperature system (°C/°F)

3 sec

3x

Exit

V. Set Data/Time display type

3 sec

4x

Exit

am/pm 12 hour clock or 24 hour clock

Error Code and Actions			
#	Description	Range	Actions
1	Electrode not installed or bad	Thermistor: 0.5k~100k Ω	Install or replace electrode
2	Not used		
3	Temperature out of range	0~60 °C	Bring solution to the temperature within range
4	Not used		
5	Calibrated value out of range	70%~130% (compare to the default value)	Re-calibrate or replace the electrode or use the default value (remove batteries)
6	TDS out of range	<10.00ppt	Use other solution

SD80 TDS Specification/Features	
#	Specification
1	Operating range: 0~60°C, <10.00ppt
2	Automatic switch over ppm and ppt. ppm:0~999ppm; ppt: 1.00~10.00ppt
3	Up to 2 points manual mode calibration, +/-50% adjustable value
4	TDS resolution: 1ppm(<=999ppm) and 0.01ppt(1.00~10.00ppt); Accuracy: ±3%FS
5	Temperature resolution: 0.1°C; Accuracy: ±1°C, Selectable °C/°F system
6	Selectable TDS factor, 442.0.7; NaCl:0.5
7	Time and date display/stamp with 25 sets of data storage (non-volatile)
8	22x22mm LCD screen, with Yellow Green backlight
9	2x CR2032 batteries
10	Auto-power off to save battery (8 minutes inactivity)

Content

- 1 TDS Meter SD 80 in a robust plastic case with strap
- 2 Batteries
- 1 Instruction Manual
- Code: 19 48 03

Accessories

- 195 00 17 Battery CR 2032 (2 Batteries required)
- 19 48 22 Replacement electrode
- 38 48 01 Beaker, 100 ml

VI. Electrode Replacement

1

2

3

4

5

6

new electrode

Instruction manuals available in further languages, visit www.lovibond.com