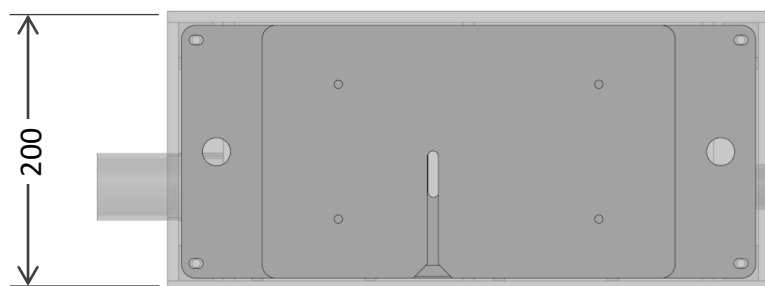
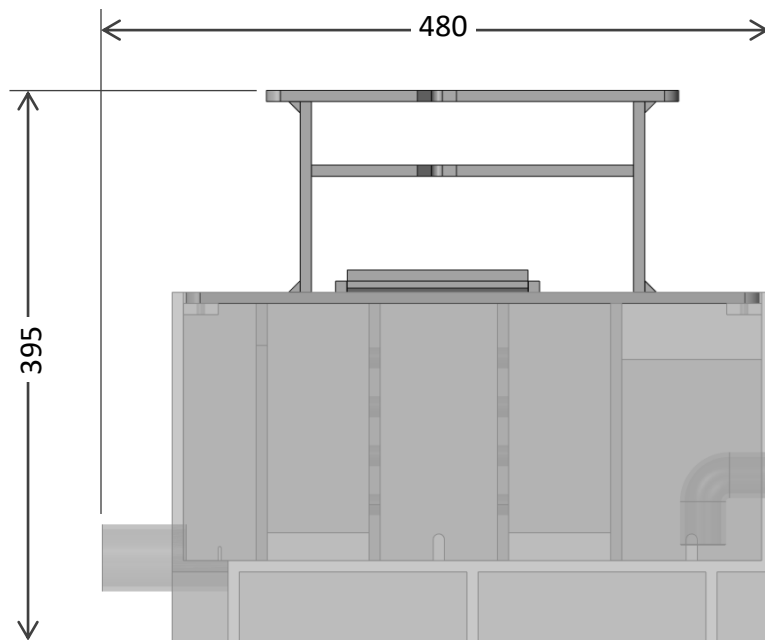
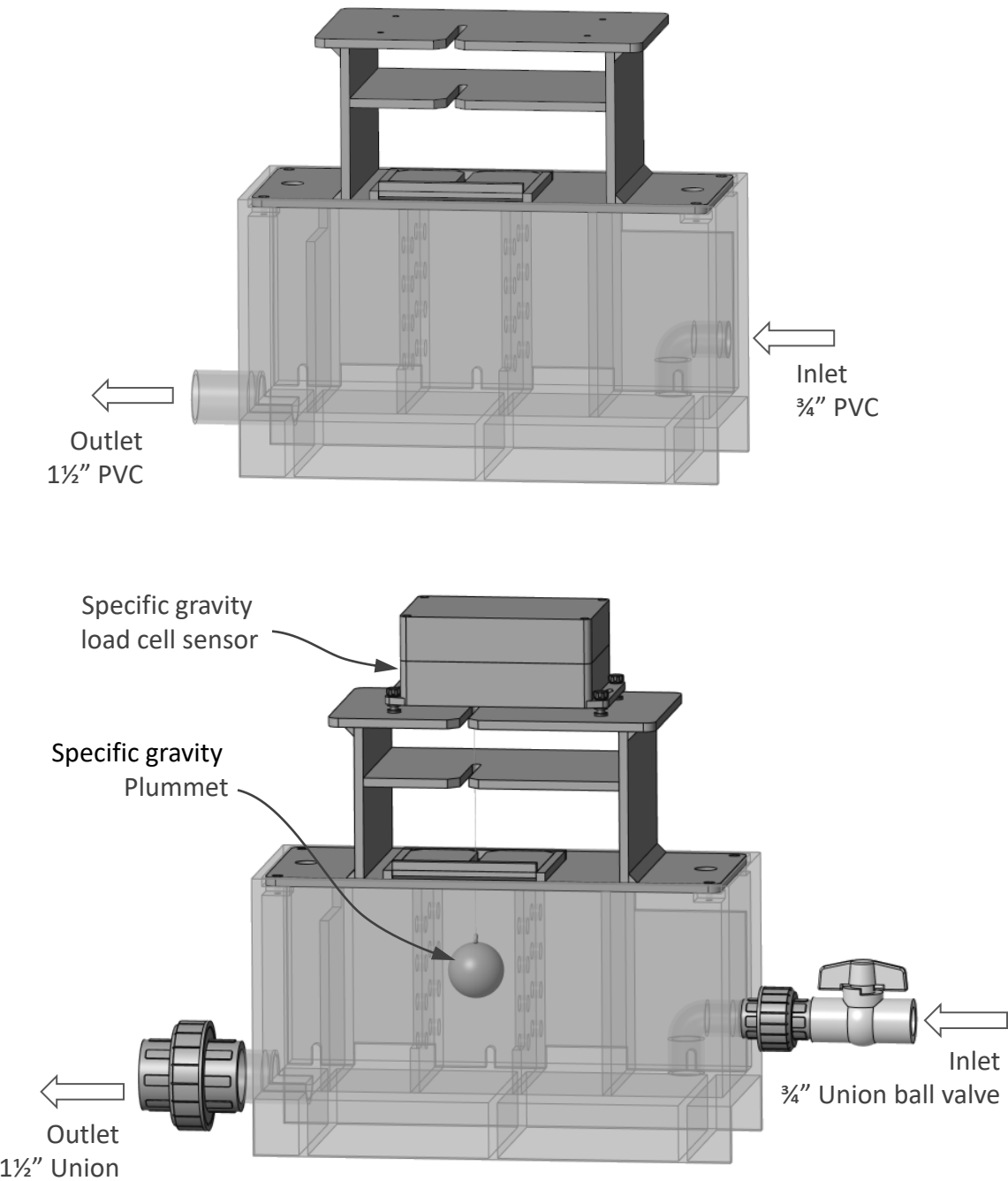


Specifications of Flow-through chamber for specific gravity measurement

- Order No.: 5419076
- Working temp.: 0~70°C
- Inlet flow rate: 1.5~5 L/min
- Recommended flow rate: 2~3L/min
- Material: PVC
- Pipe size: Inlet $\frac{3}{4}$ " PVC, Outlet $1\frac{1}{2}$ " PVC
- Dimension: 200 x 480 x 395 mm (D x W x H)
- Weight: 9 Kg



Flow-through chamber installation:



*changed according to site conditions and needs.
*To prevent overflow resulting from excessive incoming water flow, a valve should be installed at the water inlet to regulate the flow