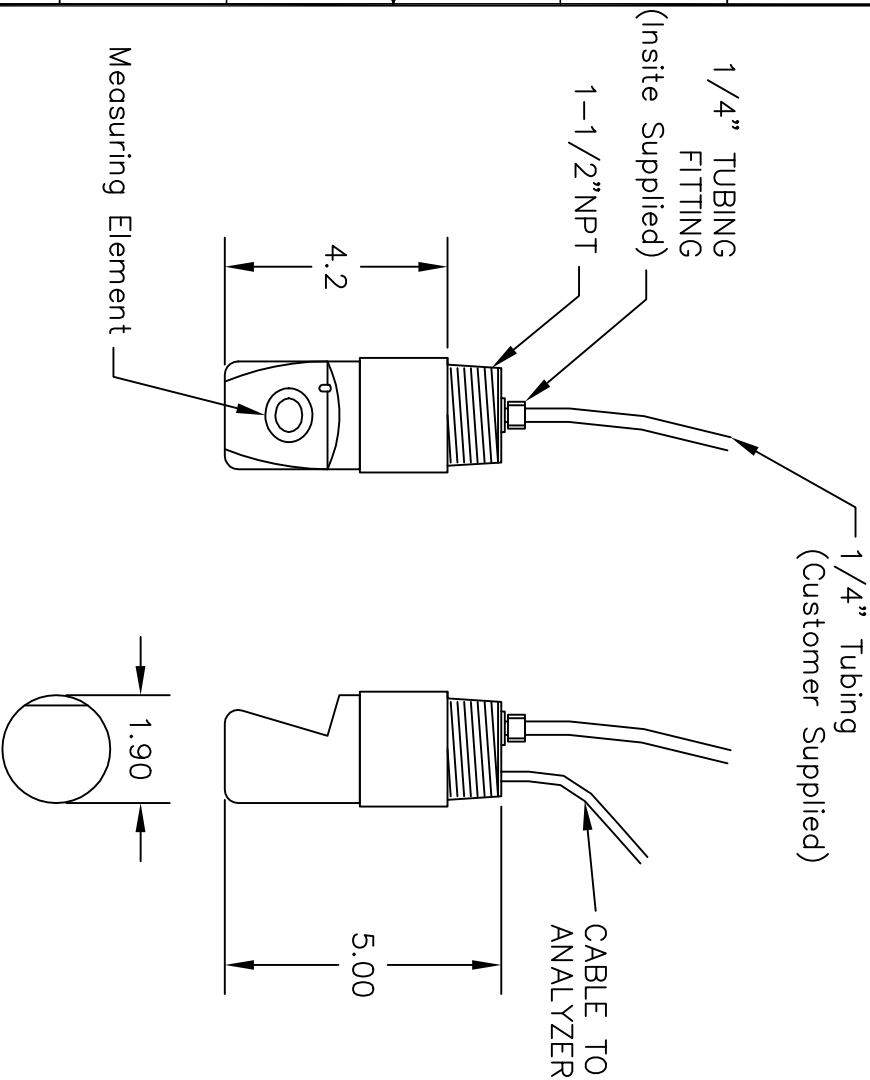



REVISIONS			
ZONE	REV	DESCRIPTION	DATE
			APPROVED



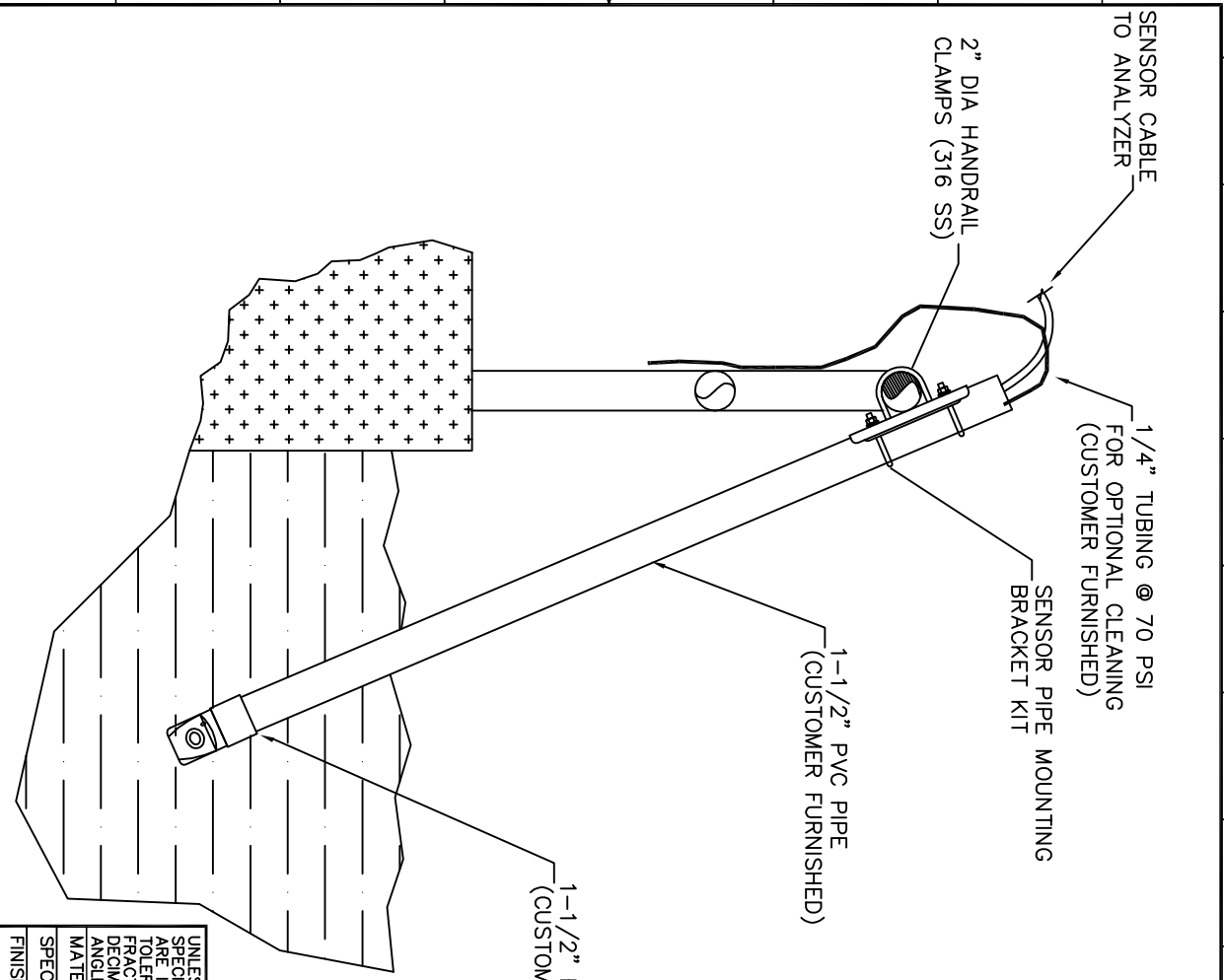
- Notes:
- 1) Sensor Material: Epoxy, Polyurethane, PVC, 316 SS
  - 2) Oxygen measurements should be take 2ft. below the surface and 3ft. from the wall.
  - 3) Measurement element surface should not be facing downward in order to avoid collecting air bubbles.

UNLESS OTHERWISE SPECIFIED: DIMENSIONS ARE IN INCHES. TOLERANCES ON: FRACTIONS DECIMALS ANGLES				CONTRACT NO.		 1550 W. Lindburg Dr. Slidell, LA 70458	
MATERIAL — SPEC — FINISH —				SIGNATURES		DATES	
				DRAFTSMAN			
				CHECKER			
				DESIGNER			
DO SENSOR OUTLINE & MOUNTING				DRAWING NO.		REV	
SIZE B FSCM NO. — SCALE NTS				11G02N004		A	
SHEET 1 OF 1							

REVISIONS			
ZONE	REV	DESCRIPTION	DATE
			APPROVED

IIIG02N005 A

- Notes:
- 1) For best accuracy, Oxygen measurements should be taken 2ft. below the surface and 3ft. from the wall.
  - 2) Measurement element surface should not be facing directly upward or downward. Sensor should be clocked to the 3 or 9 o'clock position as shown.



UNLESS OTHERWISE SPECIFIED: DIMENSIONS ARE IN INCHES. TOLERANCES ON: FRACTIONS DECIMALS ANGLES MATERIAL SPEC FINISH		CONTRACT NO.		DO SENSOR MOUNTING	
SIGNATURES		DATES		1550 W. Lindburg Dr. Stidell, LA 70458	
DRAFTSMAN				SIZE B	
CHECKER				FSCM NO.	
DESIGNER				DRAWING NO. IIIG02N005	
PROJ. ENGR.				SHEET 1 OF 1	
RELEASED				REV A	
APPROVAL					