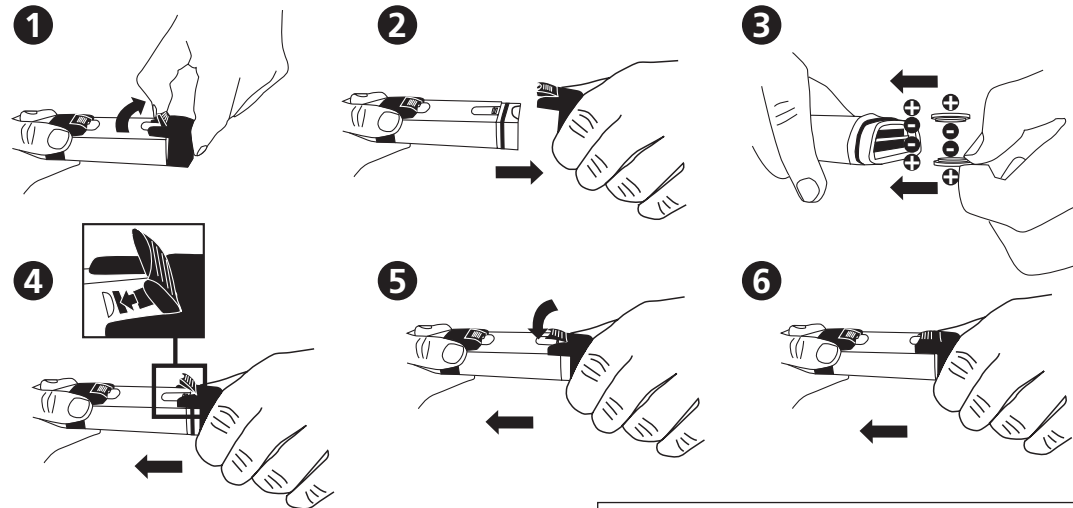




SD 60

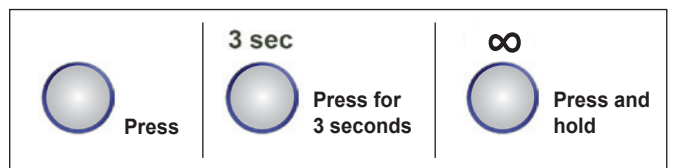
Redox

Insert the batteries



MEASUREMENT

Remove protective cap from the probe

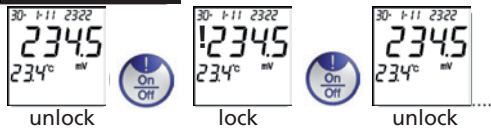


A. Power ON/OFF



Automatically turns off after 20 minutes of inactivity.

B. Lock/Unlock Data



Possible slight delay after pressing before freeze of the data (!).

C. Backlight ON/OFF



D. Store Data



After 3 sec. the file no. temporarily appears on the display, e.g. 01. Once the storage has reached max. capacity, the data will overwrite the oldest files.

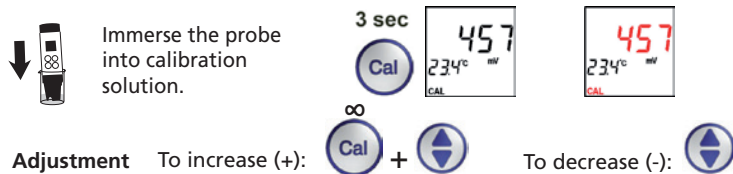
ORP CALIBRATION

Characters in **RED** represent „Flashing symbols“.

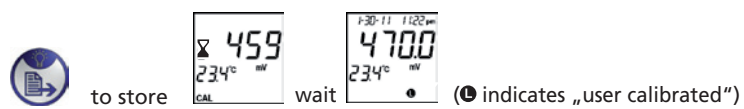
- Re-Calibrate according to individual recommendations! Rinse the electrode with distilled water after each measurement.
- Choose Lovibond® ORP Standard Solution

E. Calibrate ORP

Remove protective cap from the probe.
Power ON (see A)



Max. ± 150 mV of window:



SETUP

F. System Setup

Characters in **RED** represent „Flashing symbols“.

Unfreeze data first (see frontside B) before Menu selection.

3 sec Recall Data go to I. 1x Set Date and Time go to III.

2x Set Temperature go to IV. 3x Set Data/Time display type go to V. To enter.

I. Recall Data

3 sec Press for further files. Exit

Delete stored data.

3 sec Automatic Exit

II. Set Date and Time

Select V. 'Set Data/ Time display type' first.

3 sec 1x

24 hour clock

Exit

am/pm 12 hour clock

Exit

Adjustment: to increase (+); to decrease (-)

III. Set Temperature system (°C/°F)

3 sec 2x Exit

IV. Set Data/Time display type

3 sec 3x Exit

am/pm 12 hour clock or 24 hour clock

Error Code and Actions

#	Description	Range	Actions
1	Electrode not installed or bad	Thermistor: 0.5k-100k Ω	Install or replace electrode
2	Not used		
3	Temperature out of range	0-60°C	Bring solution to the temperature within range
4	Not used		
5	Calibrated offset out of range	-100-100mV (compare to the default value)	Adjust to the correct ORP buffer value while calibrating or use the default value (take out batteries)
6	ORP out of range	-1800-1800mV	Use other solution

SD60 ORP Specification/Features

#	Specification
1	Operating range: 0-60°C, -1800-1800mV
2	1 point calibration with +/-150mV adjustable ORP value
3	mV resolution: 0.1mV(within ±1000mV) and 1mV(outside ±1000mV); Accuracy: ±20mV
4	Temperature resolution: 0.1°C; Accuracy: ±1°C, Selectable °C/°F system
5	Time and date display/stamp with 25 sets of data storage (non-volatile)
6	22x22mm LCD screen, with Yellow Green backlight
7	2x CR2032 batteries
8	Auto-power off to save battery (20 minutes non-use)

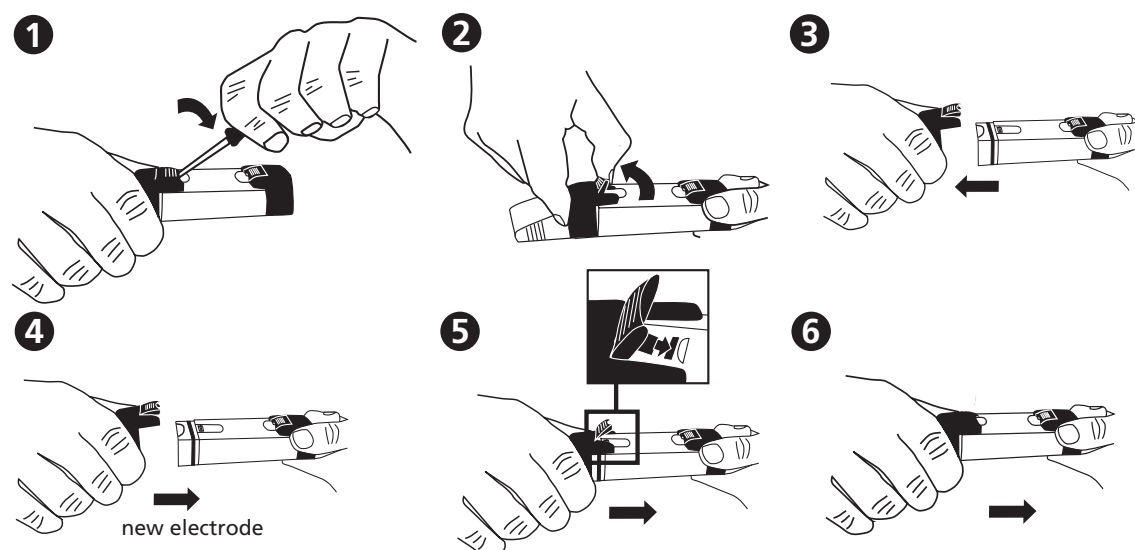
Content

- 1 ORP Meter SD 60 in a robust plastic case with strap
 - 2 Batteries
 - 1 Instruction Manual
- Code: 19 48 01

Accessories

- 19 500 17 Battery CR 2032 (2 Batteries required)
- 19 48 21 Replacement electrode
- 38 48 01 Beaker, 100 ml
- 19 50 70 Standard solution

VI. Electrode Replacement



Instruction manuals available in further languages, visit www.lovibond.com