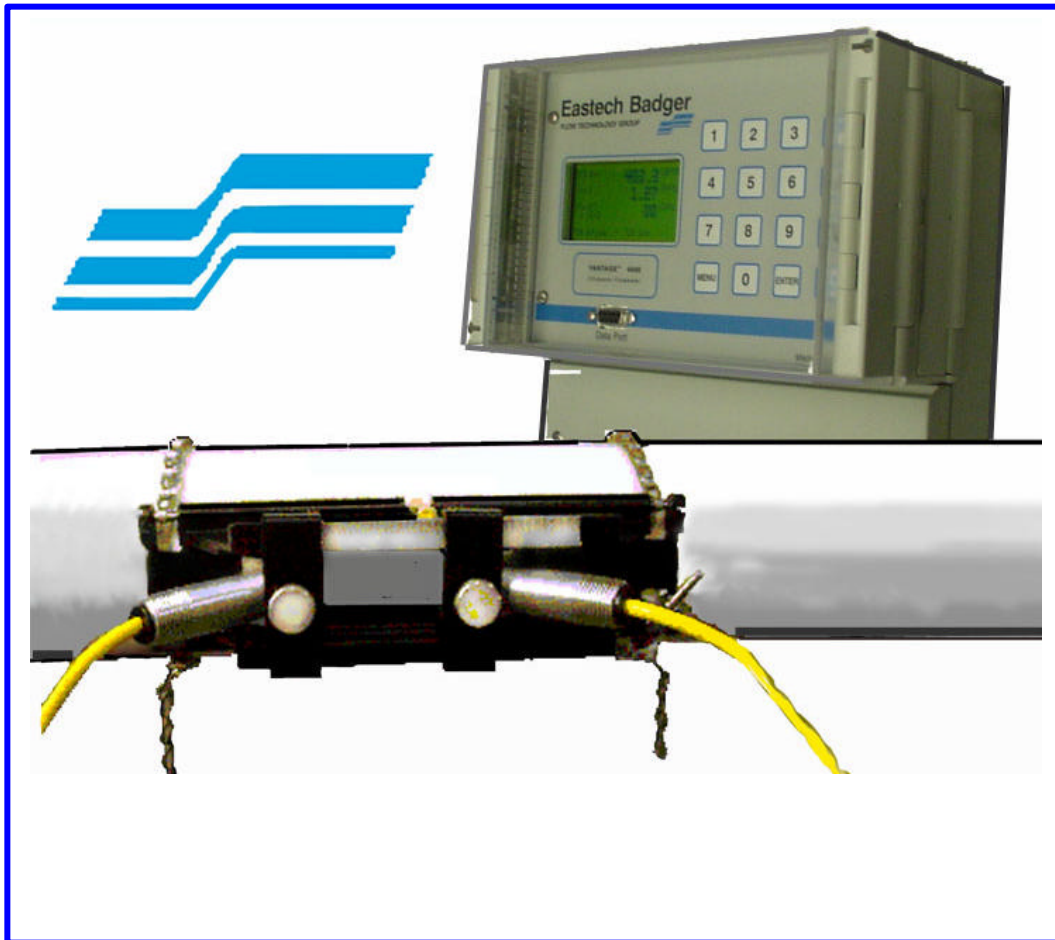


Vantage DDS

Download Data Software



IOM Manual

Introduction:

This manual includes instruction for installing and operating the data files contained on the CD Disk labeled Vantage DDS data download software. This disk may have been included with Eastech Badger equipment or sold separately. The CD disk includes the following files:

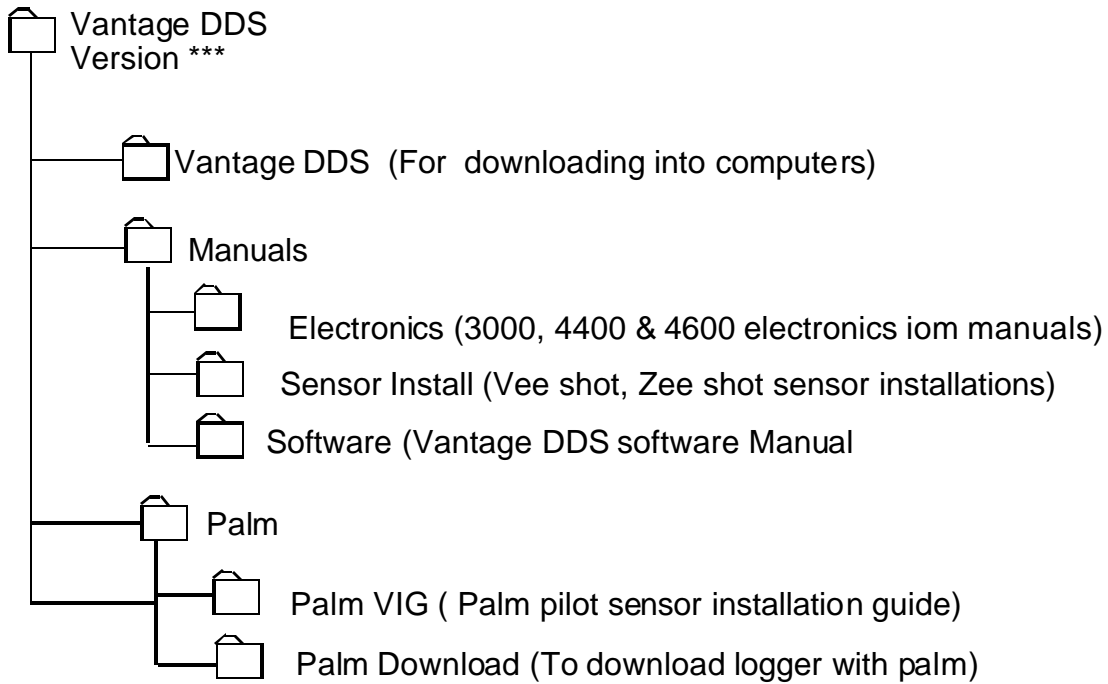


Table of Contents:

Description	Pages
Downloading from CD Folder.....	3
Palm Pilot Add Ons.....	3-4
VantageDDS Operation.....	5-8
Downloading Data with a Palm Pilot.....	9

CABLES NEEDED:

FROM COMPUTERS TO 4000	DB9-DB9 SERIAL CABLE (Not Provided by Eastech Badger)
FROM Palm Pilot to 4000	Special Cable (From Eastech Badger p/n 513310-0001)
From Palm Pilot to Computer	Palm Cable (Supplied with Palm Pilot)

Downloading from CD to Computer

- 1) Insert VantageDDS CD into the disk drive of the computer.
- 2) Double click on My Computer icon on desk top and then double click on CD drive where the CD is inserted.
- 3) Double click on the Vantage DDS folder.
- 4) Double click on the Vantage DDS folder.
- 5) Double click on the “setup” icon. This will start the Install program.
- 6) Follow the directions on the installation menus.

A folder will be set up in the C:/ Program Files folder called VantageDwn. Any time a down load is performed from the meter the data will be located in the VantageDwn folder. This concludes the installation of the Vantage download program. To see operation of the program go to page 5.

Palm Pilot Add Ons

The Palm folder will contain two folders: Palm VIG and the Palm Download folders.. The file Data Grab in the Palm download folder will be the only file required to install on the Palm Pilot if downloading from Model 4000.(Refer to page 10).

- 1) Open the Palm download folder located on the Eastech Badger Vantage DDS CD. There will be one file: DataGrab.

Double click on the DataGrab icon. The following screen will appear: (Figure 1).

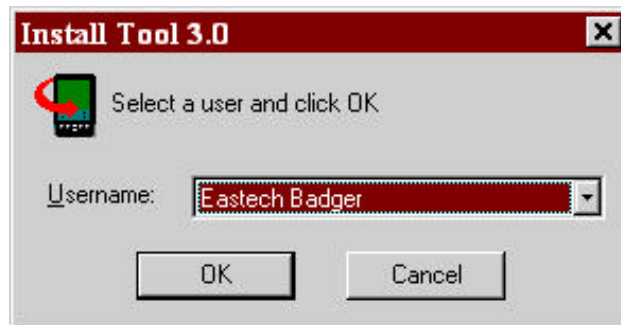


FIGURE 1.

Select the username of the Palm Pilot to be used. Click “OK”. The following screen will appear: (Figure 2).

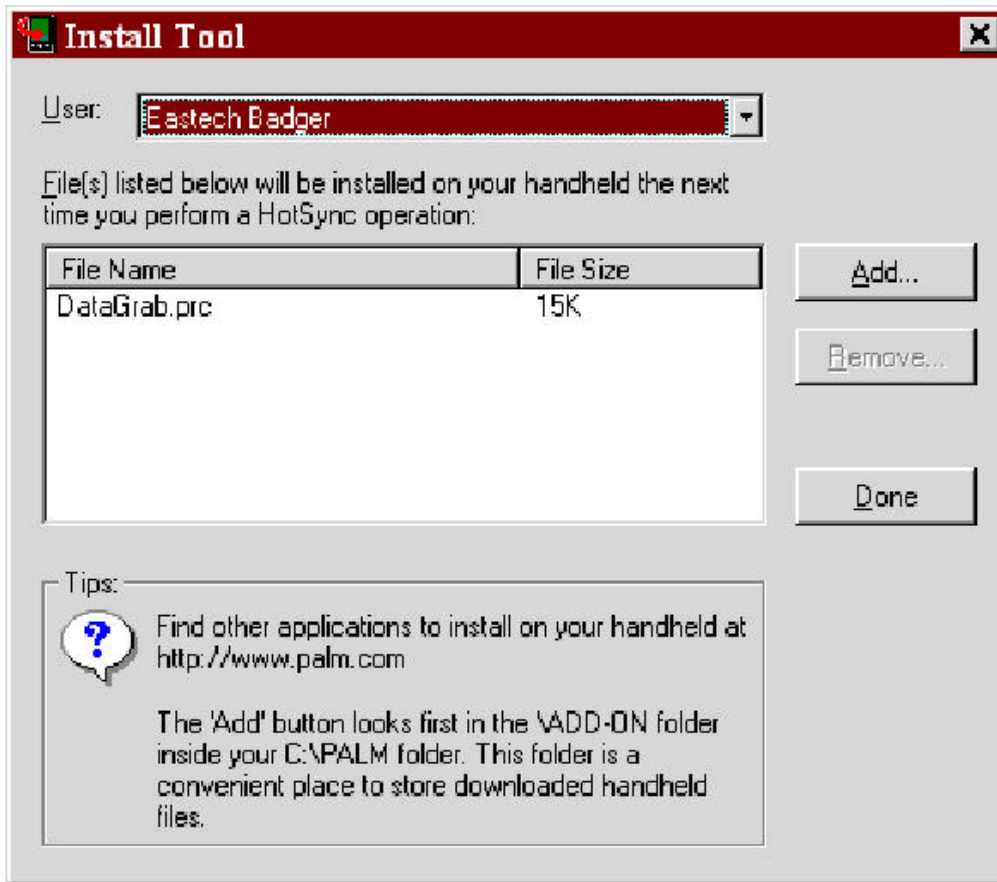


FIGURE 2.

The file name DataGrab.prc should appear in the file box. Click the “Done” button. A screen will appear to tell that this file will be added the next time the “Hotsync” operation is performed with the Palm Pilot. Click “OK”. Click “Done”

The files necessary to complete the installation of the Vantage DDS software for the Palm Pilot now resides on the computer.

The next time that a “HotSync” is performed on the Palm Pilot the above files will be visible on the main menu of the Palm Pilot: “Download. There will be a small icon of the 4000 above the description.

Vantage DDS Operation

To start the operation of the Vantage DDS download software go to: Start/Programs/VantageDwn, the following screen will appear: (Figure 3).

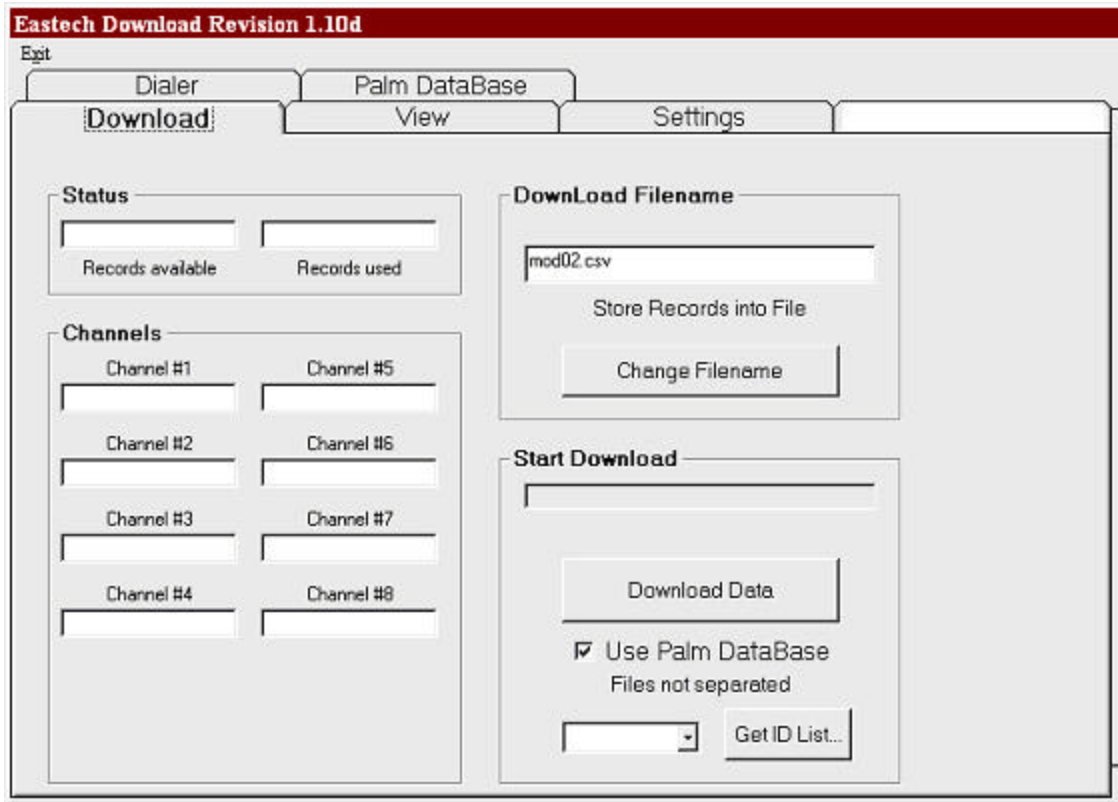


FIGURE 3.

Note: The Vantage electronics must be programmed with the channels that are to be logged.
Refer to owner's manual under section on "Data Logger".

This is the main screen of the VantageDDS program. There are five tabbed sections in the program:
Download – This tab is used for downloading the data from the meter either with a computer or opening data retrieved by a Palm Pilot and a "HotSync" operation performed to the computer. (Note the click box must be checked if a Palm Pilot is to be used for data collection. The "Get ID List will allow the user to select the slave ID of the 4000 to be downloaded) The downloaded data is converted to a .CSV (comma separated variable) file that can be loaded into most spreadsheet programs.

View – This tab is used to view the downloaded data.

Settings – This tab is used to select the com port and baud rate settings.

Dialer-This tab is used for dialing out when modems are involved in data collection.

Palm Database- This tab is used to for set up using a Palm Pilot for downloading.

Step 1:

When first using the program is to go to the **Settings** tab and select the communication port that will be used. The following screen shows this tab window. (Figure 4).

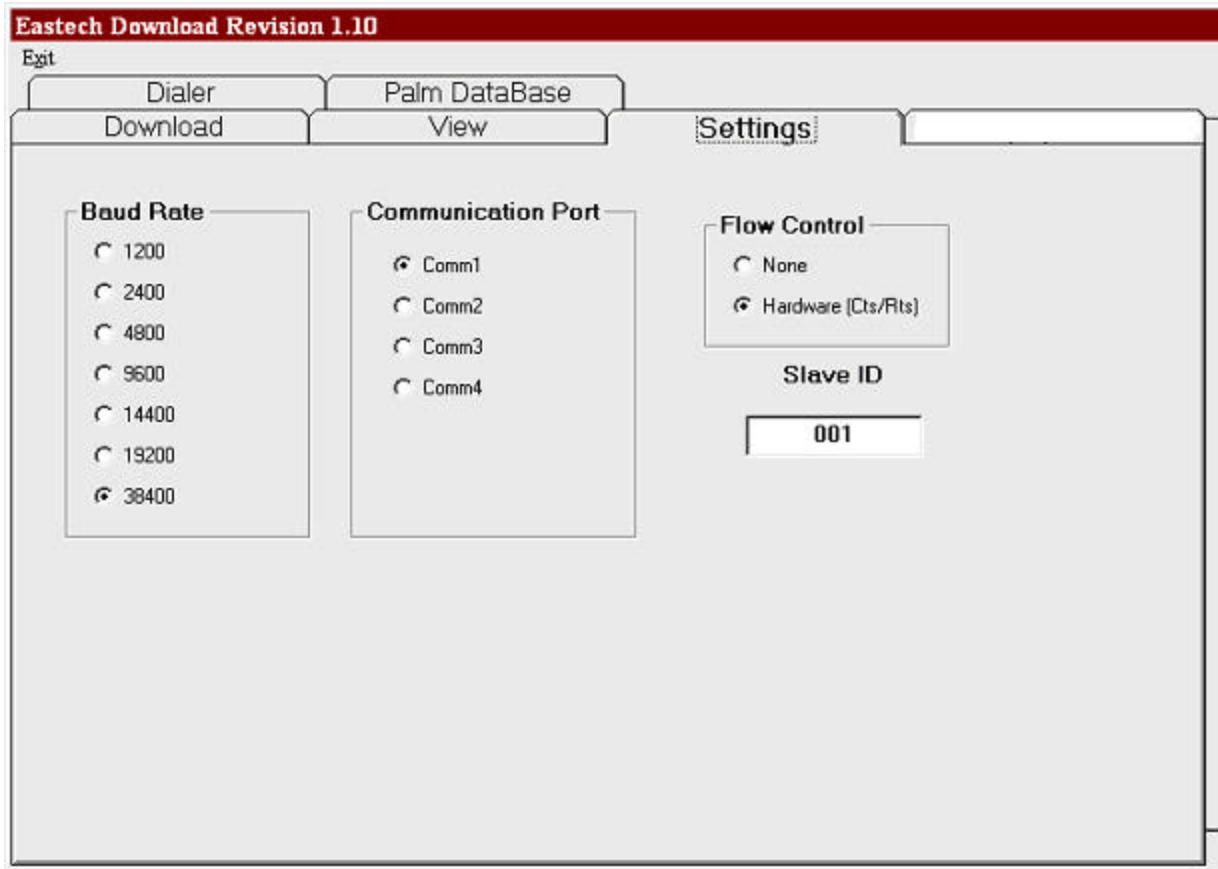


FIGURE 4.

The default **baud rate** in the Vantage 4000 is 38400.

Warning: This should not be changed unless it is changed in the 4000.

The **Communication Port** is selected based on the users computer and the comm. port being utilized.

The **Flow Control** should be left set on Hardware.

The default **Slave ID** in the Vantage 4000 is 001.

Warning: Do not change this unless it is changed in the 4000.

Step 2:

Select the Download tab. Refer to the picture on page 5. (Figure 3). A standard **RS232 serial cable** is used to connect the computer to the serial port (DB9 female) on the meter. This can be found at your local computer store.

First click on the **Change Filename** button. Type in the name you want for the file followed by .cvs in the File name box. Then click on the **Download Data button**. The Status boxes will show the records available and the records used. The Channels box will show the item in each activated channel that is being logged. The Start Download status bar shows the percent progress of the download.

After the download is completed, the **View** tab can be selected and the data viewed on a spreadsheet. Use the scroll bar on the right to scroll through the data.

After the data has been reviewed and determined that all the data was downloaded, the memory of the logger can be cleared.

Note: If the data is not cleared, on the next download all of the previous data plus the latest data will be downloaded.

The **Dialer** tab (Figure 5) will store slave IDs, phone numbers and dial outs to the Model 4000 using modem systems. Up to ten Slave ID/phone numbers may be stored. Click into box for desired additions/changes and enter the information needed.

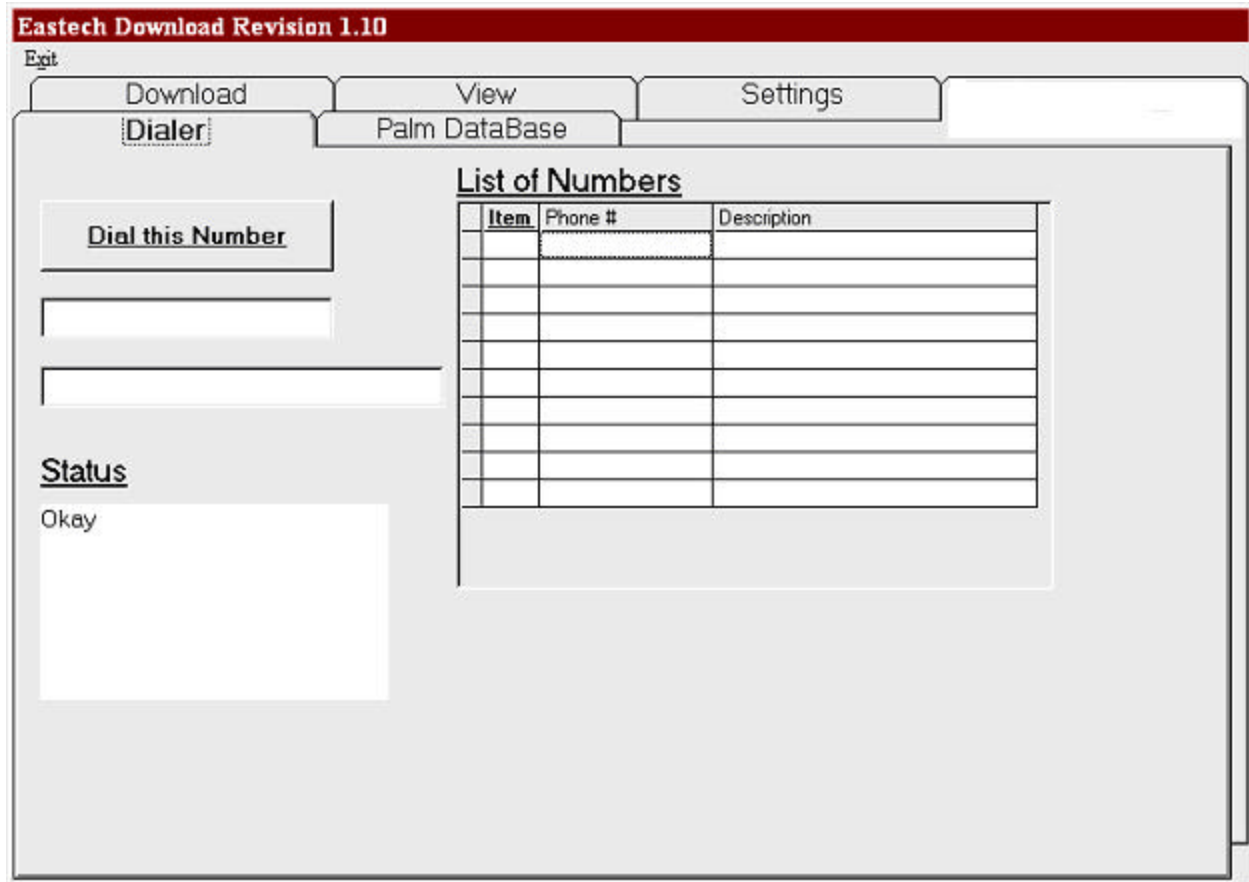


FIGURE 5.

The **Palm DataBase** tab (Figure 6) will be the location desired to store the downloaded file from the Palm Pilot. The default setting will be c:\Palm\UserName\Backup\DBESK2.pdb” The “UserName” will be the name assigned to the Palm Pilot to be used.

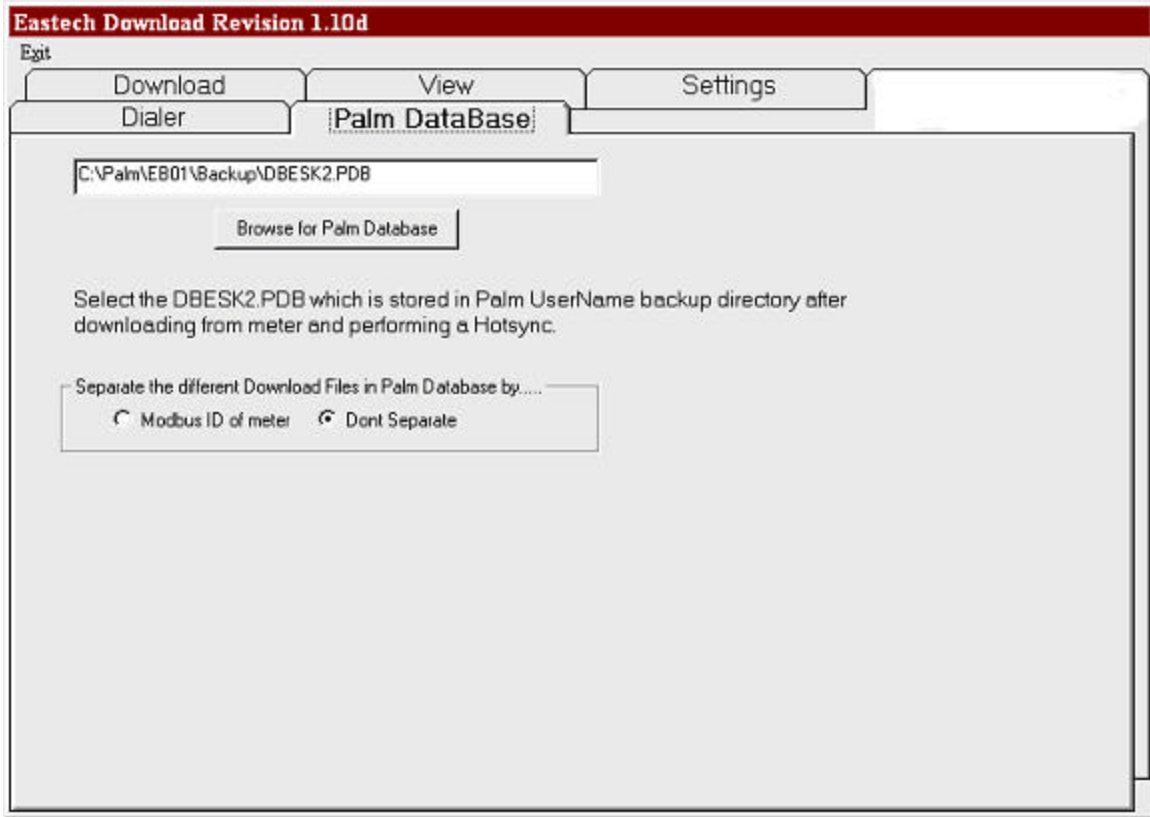


FIGURE 6.

The radios button will give optional selections on how the data will be downloaded.

Modbus ID of meter: This radio button will save data as slave ID designations. If more than one meter is to be downloaded by the Palm Pilot then the Slave ID designation should be different for each 4000 meter.

Don't separate: This radio button will save data on top of previous data for each meter. If more than one Model 4000 exist and Slave Ids exist for each. Use this button if downloading only one unit if the Slave ID is other than 01.

Meter data downloaded with a Palm Pilot will be stored in the Backup folder of the Palm Pilot Program.

Meter data downloaded by a computer will be stored in c:\program files\4000dwn.

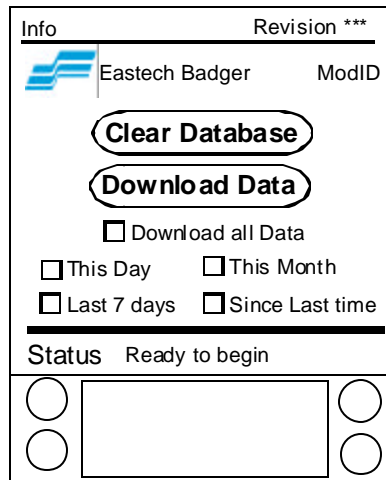
Downloading Data with a Palm

If downloading Model 4000 with a Palm Pilot the firmware revision of the Model 4000 must be version 1.0 or greater. Refer to page 10 for upgrading the Model 4000 firmware with a Palm Pilot.

If Eastech Badger Palm software has not been installed on Palm refer to Pages 3 & 4 for Installing 4000DDS on Palm Pilot.

Once the Palm has the Eastech Badger programs for downloading:

- 1) Cable (513310-0001) provided by Eastech Badger should be plugged into the bottom of the Palm Pilot and into the DB9 connection in the front panel of the 4000.
- 2) The Model 4000 and the Palm should be powered on.
- 3) Press the “Download” Icon on the screen of the Palm Pilot. The following screen should appear:



The screenshot shows a screen titled "Info" with "Revision ***" in the top right. Below the title is the Eastech Badger logo and the text "ModID". There are two large buttons: "Clear Database" and "Download Data". Below these are several checkboxes: "Download all Data", "This Day", "This Month", "Last 7 days", and "Since Last time". At the bottom, there is a "Status" field displaying "Ready to begin". The screen is framed by a border with four circular icons at the corners.

ModID: Select the Slave ID of the Model 4000 to be downloaded.

Clear Database: This button will clear any previously downloaded data in the Palm Pilot.

Download Data: This button will download the data from the Model 4000. When this button is selected the “Status” at the bottom will display “starting” and will display “completed” when finished downloading.

This Day: This box must be checked to download data for present day.

This Month: This box must be checked to download data for this month.

Last 7 days: This box must be checked to download data for the last seven days.

Since Last time : This box must be checked to download data since the last time downloaded.

After downloading the Model 4000 with the Palm Pilot the Palm Pilot must be connected to the main computer and a “hotsync” operation must be performed to transfer the data.

Note: Refer to (Figure 6, page 7) for retrieving downloaded data after “Hotsync”.

The “View” icon will allow the user to view the meter when connected with the 4000 either by cable or by the RS-485 connection. The display and keypad on the Palm Pilot will operate and display exactly like the 4000.