



Badger Meter Europa GmbH

VHQ evaluation software

SHORT MANUAL

September 2004

Version VHQ evaluation software-09/04-e

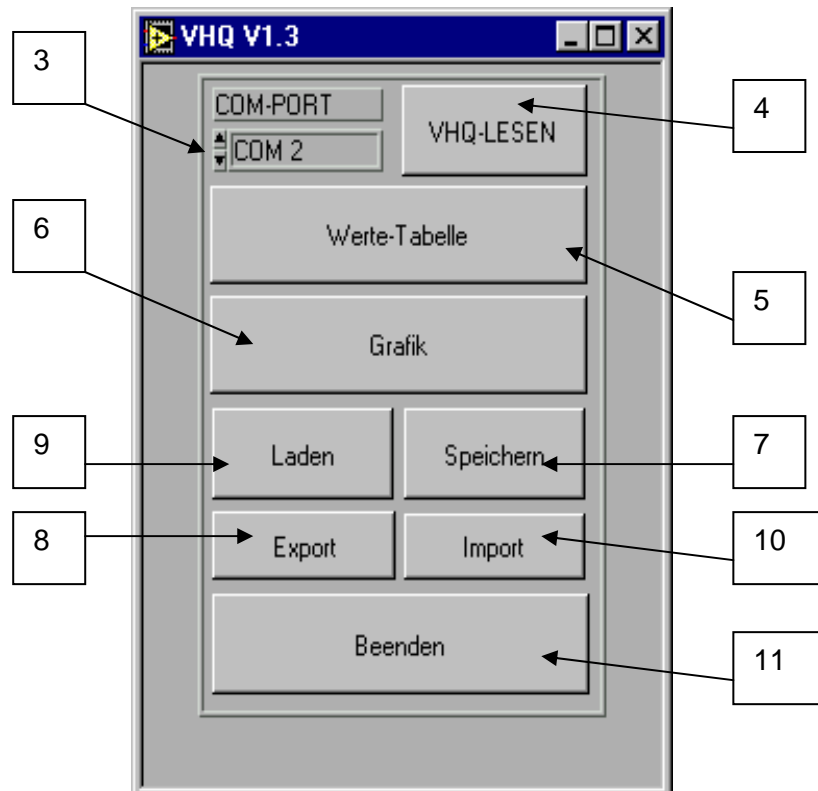
- 1. Software installation..... 1**
- 2. Start with VHQ.exe..... 1**

1. Software installation

Delivery on 2 disks. Start of the installation with setup.

2. Start with VHQ.exe

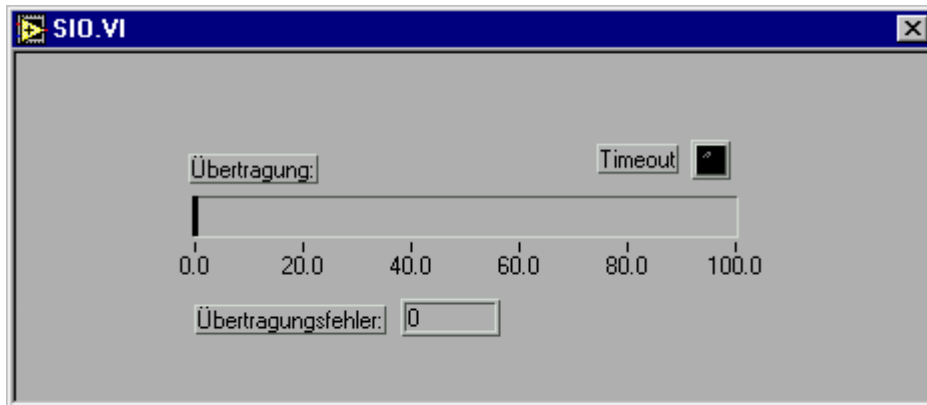
This mask appears:



3.	COM-PORT	COM-PORT	Adjusting the COM Port.
4.	VHQ-LESEN	VHQ-READ	Start reading the VHQ memory.
5.	Werte-Tabelle	Value chart	Display of the memory content in the text.
6.	Grafik	Graphics	Graphical display of the memory content.
7.	Speichern	Save	The read-out data are stored (*.dat).
8.	Export	Export	The read-out data are stored in the *.txt format (these data can be processed with an editor).
9.	Laden	Load	Stored data can be read back in the *.dat format.
10.	Import	Import	Stored data can be read back in the *.txt format.
11.	Beenden	Exit	Exit reading program.



Mask for reading-out of the data from the VHQ memory.
 Bar 0-100% of the data quantity.



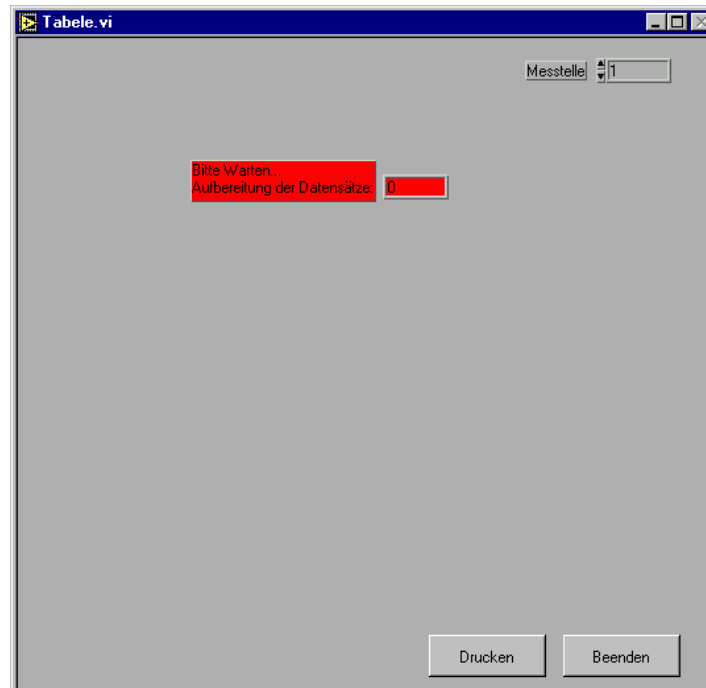
Übertragung = Data transfer
 Übertragungsfehler = Transmission error

Error message timeout: No connection to the VHQ or VHQ not connected.
 Transmission error ("Übertragungsfehler"): No plausible values in the memory.



Attention: Data transfer failed!
 Repeat data transfer!

Setting window for value chart display



Messstelle = Measuring site
 Drucken = Print
 Beenden = Exit



Value chart

VHQ-Tabelle Messtelle 1

Nr.	Datum	Zeit	v [m/s]	h [m]	Q [l/s]	Q-Gesamt [m ³]
50	25.01.2000	15:54:07	0.111	0.103	1.0	1.092
51	25.01.2000	15:54:22	0.116	0.104	1.0	1.114
52	25.01.2000	15:54:37	0.119	0.103	1.0	1.137
53	25.01.2000	15:54:52	0.114	0.104	1.0	1.160
54	25.01.2000	15:55:07	0.111	0.103	1.0	1.182
55	25.01.2000	15:55:22	0.111	0.104	1.0	1.204
56	25.01.2000	15:55:37	0.113	0.104	1.0	1.226
57	25.01.2000	15:55:52	0.116	0.104	1.0	1.248
58	25.01.2000	15:56:07	0.115	0.104	1.0	1.271
59	25.01.2000	15:56:22	0.116	0.104	1.0	1.294
60	25.01.2000	15:56:37	0.120	0.104	1.0	1.317
61	25.01.2000	15:56:52	0.119	0.104	1.0	1.341
62	25.01.2000	15:57:07	0.116	0.104	1.0	1.364
63	25.01.2000	15:57:22	0.119	0.103	1.0	1.387
64	25.01.2000	15:57:37	0.126	0.103	1.0	1.411
65	25.01.2000	15:57:52	0.123	0.104	1.0	1.436
66	25.01.2000	15:58:07	0.116	0.103	1.0	1.459
67	25.01.2000	15:58:22	0.119	0.104	1.0	1.482
68	25.01.2000	15:58:37	0.117	0.104	1.0	1.506
69	25.01.2000	15:58:52	0.119	0.104	1.0	1.529
70	25.01.2000	15:59:07	0.121	0.103	1.0	1.553
71	25.01.2000	15:59:22	0.119	0.103	1.0	1.576

Drucken Beenden

Messstelle = Measuring site

With key "Drucken" (Print) = print value chart
 With key "Beenden" (Exit) = back to start menu

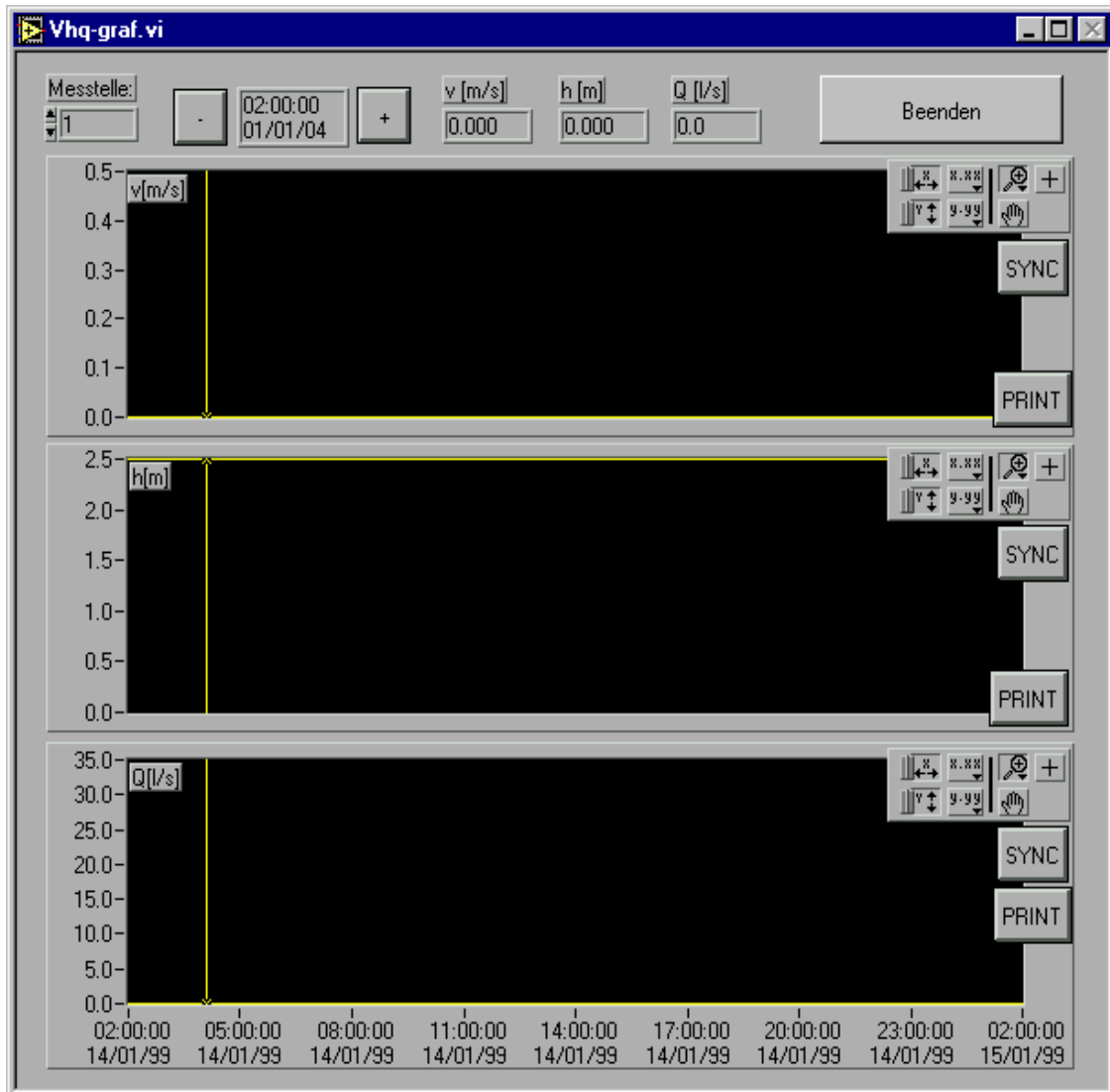


Evaluation graphics

Selection measuring site 1-99

With key "+/-" step through measuring site with crosshair

Display of the values V H Q

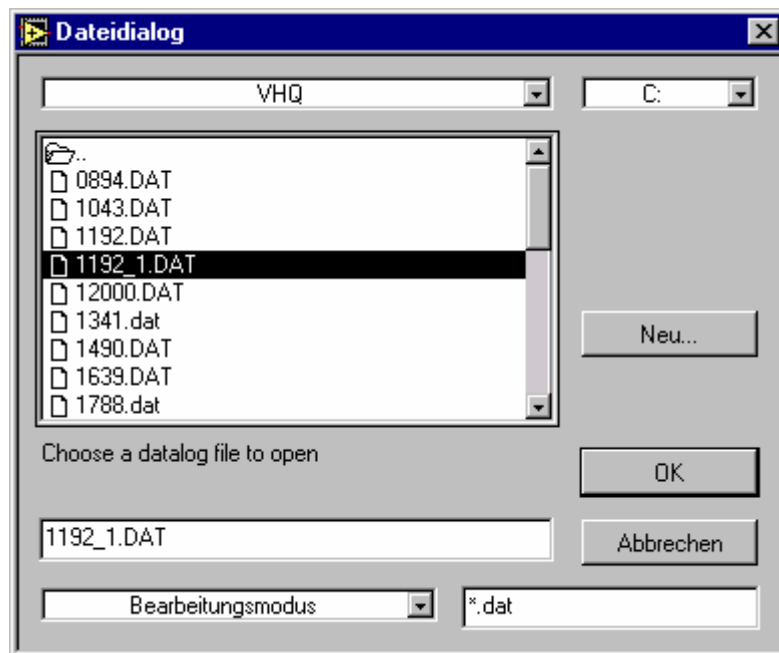


With key "PRINT"
 With selection group
 With key "SYNC"
 With key "Beenden"(Exit)

Print
 Tools, data, zoom
 Synchronize all windows
 Back to start menu

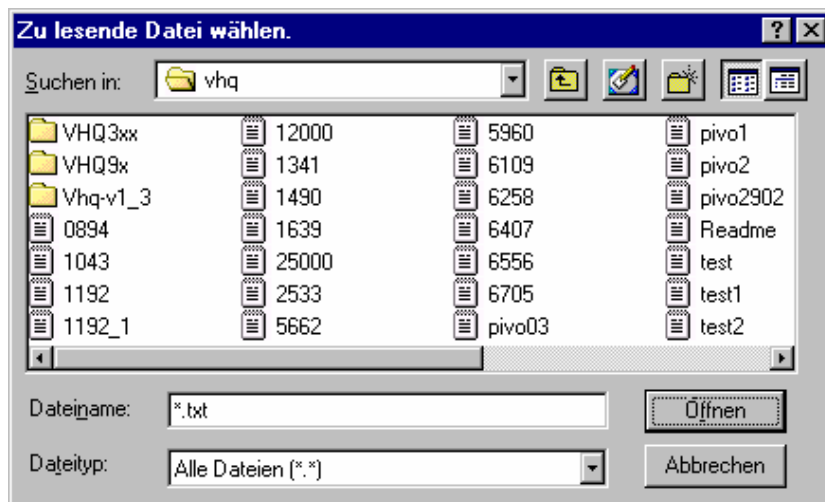


Selection for the loading of saved data or measuring values in the *.Dat format



Neu = new
Abbrechen = abort

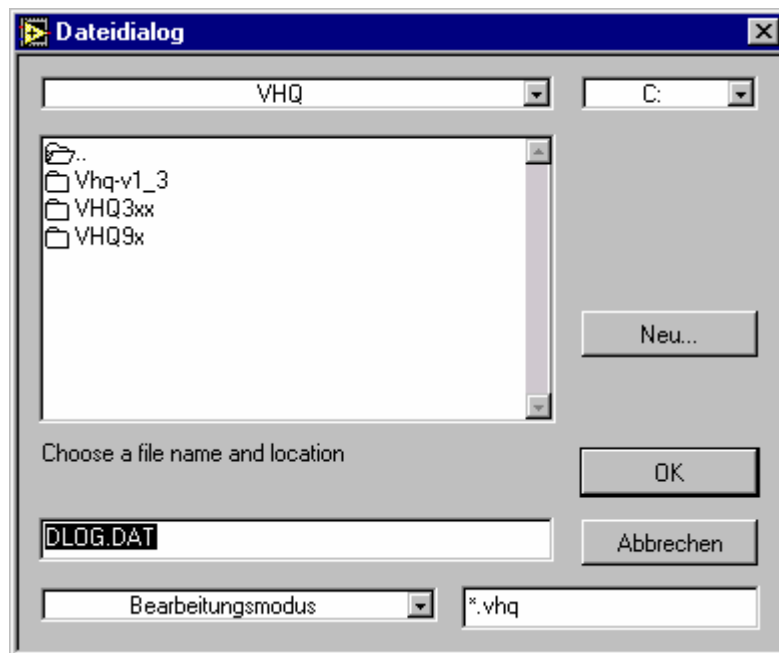
Selection for the import of saved data or measuring values in the *.txt format



Zu lesende Datei wählen = Choose file to read-out
Suche in = Search in
Dateiname = File name
Dateityp = File type
Öffnen = Open
Abbrechen = Abort

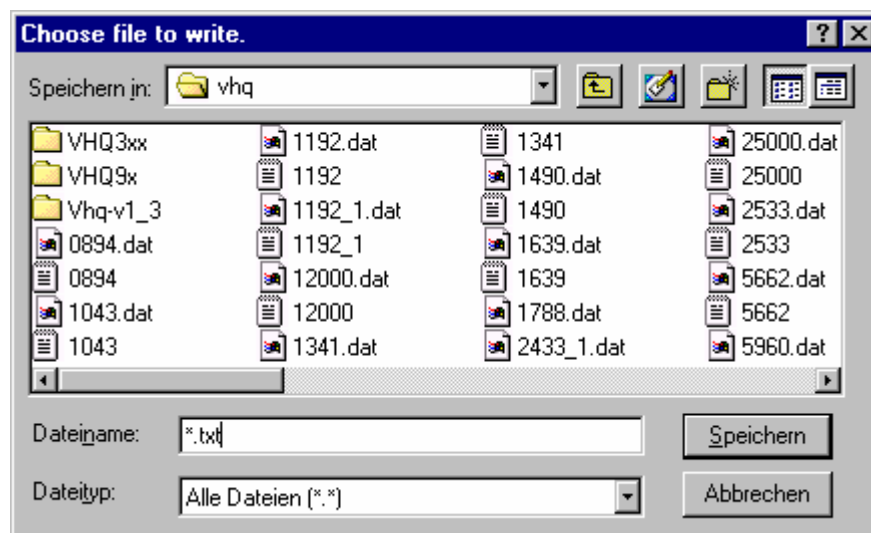


Saving of data in the *.Dat format



Neu = new
Abbrechen = abort

Export of data in the *.txt Format for viewing or editing



Speichern in = Save in
Dateiname = File name
Dateitype = File type
Speicher = Save
Abbrechen = Abort



Hotline

Tel. +49-7025-9208-0 or -20
Fax +49-7025-9208-25



Badger Meter Europa GmbH
Subsidiary of Badger Meter, Inc.

Karlstrasse 11
72660 Beuren (Germany)
E-mail: badger@badgermeter.de
www.badgermeter.de